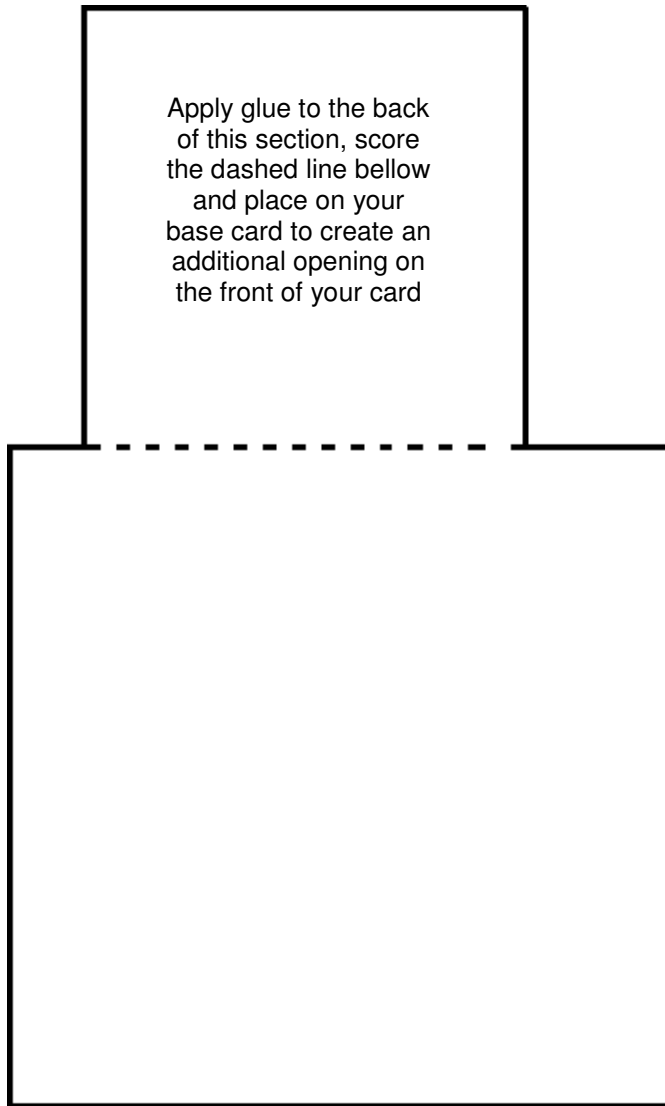


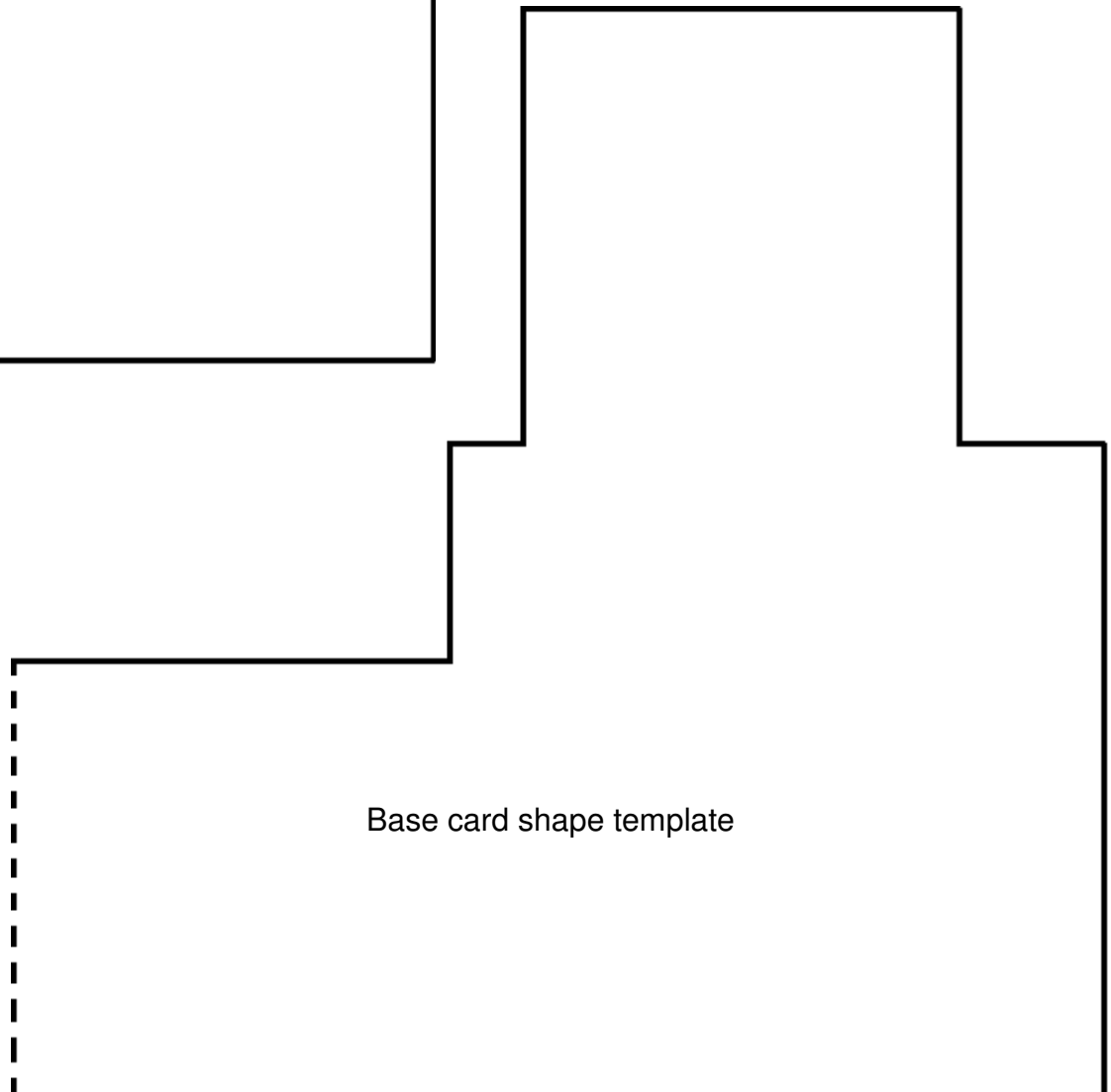
## Cubes Card

Place this dashed line up to the fold on your card, draw around the shape then cut out keeping the card folded to create your shaped base card.



The base card divides in to 3 different squares to which you can add your choice of decoration. The additional template (left) can be cut out separately and added to the front of the card to give the largest square an additional opening feature.

The squares can be tied with ribbon round to make them in to gifts or other embellishments added to each square, whatever you choose to put on or create, it's up to you.



Base card shape template

## Cubes Card

Print out the template sheet on to everyday printer paper. Cut out the piece marked base card shaped template. Use a large square card blank or a piece of folded A4 card and place the template on it matching the dashed line up to the fold on the card. Draw around the template shape and then keeping the card folded cut it out. You should now have your shaped base card done. Next cut the other template out from the sheet and draw around that on to a single sheet of card.

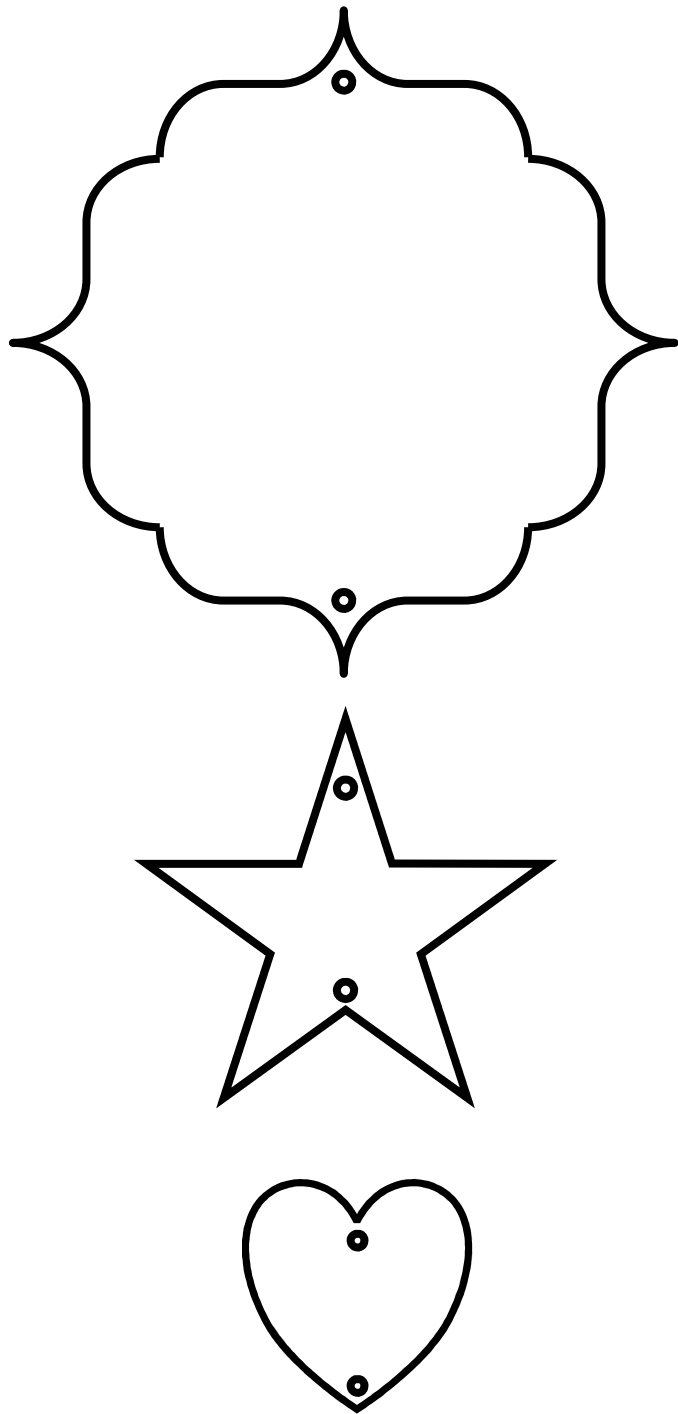
Now you need to pick out three different patterned papers. Cover the whole of the front of the card with one of them then cover the larger half of the other piece of card with another paper and the smaller side of it with the last one. Next score a line as indicated on the template on the piece of card and apply adhesive to the back of the smaller square. Stick it down on to the front of your card. The opening can be made by folding the larger square up. You can add a plain piece of card underneath the opening to add a photo or a message if you want to. Finally you can decorate the front of each square with ribbon make them look like gifts or you can decorate them another way, you choose.

Have fun!



Card by Tracy Gough

This project is for adult use only as it involves using cutting tools and using materials that may ruin clothing. Crafty Templates or anyone associated or manufacturers mentioned in the instructions can not be held responsible for any damage to personal clothing or property that may arise from the use of these projects and templates. Please read the full terms and conditions of use, which you can find on [www.craftytemplates.co.uk](http://www.craftytemplates.co.uk). You can also find contact details here if you need any further help with your templates or ideas for your cards.



**Dangle Card**

## Dangle Card

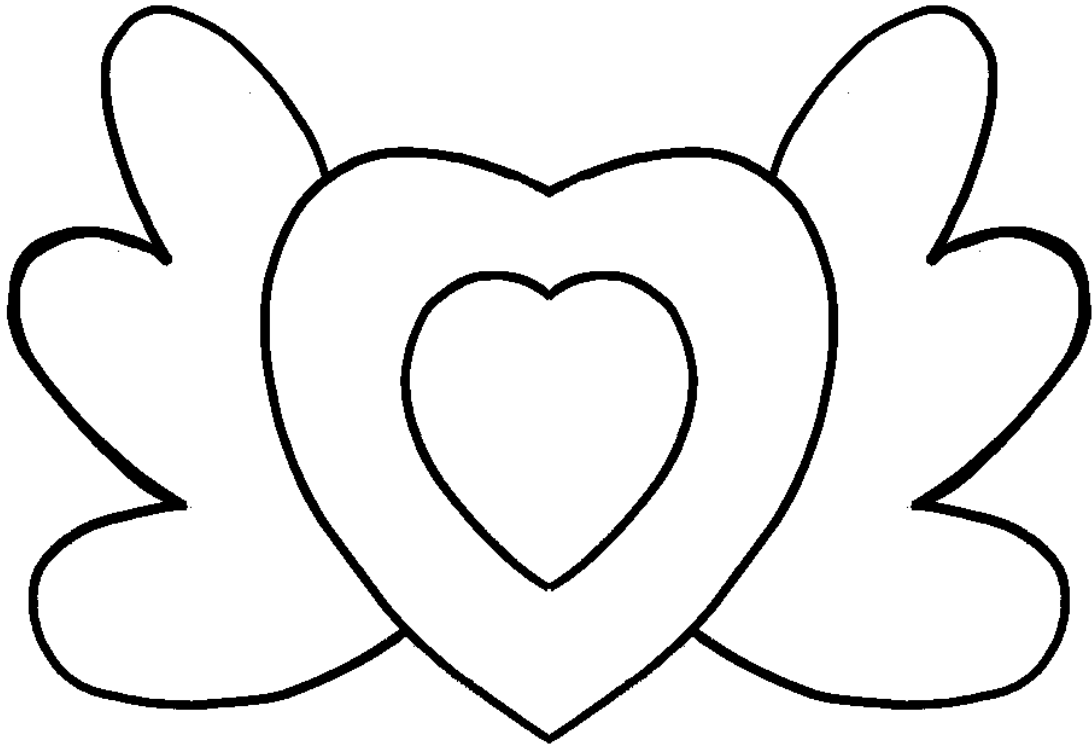
First you need a DL size card if you don't have ready made card blanks to hand you can make one by cutting an A4 sheet of card to measure 20cm across (looking at it in landscape)) and then folding it in half.

Once you have your card blank print off the template sheet. You can save time by printing the sheet out onto card but you can also print on to paper and draw around each shape on to card then cut them out. Whichever way you choose you need to end up with one of each of the shapes cut from card. Next pick three different papers, you can go for patterns or plain or mix them up it's up to you. Cover both sides of the cut out pieces with the papers. Use the template as a guide to see where to punch the holes in the top and bottom of each piece. Take some thread and string each of the pieces together. You can thread some beads on as you go if you like. Once you get to the end pull a little thread a little and pop a bead on the end to stop the pieces falling off. Leave the top end long for now. Next lay the dangly embellishment on to your card and mark with a pencil the top of the largest piece make a hole in your card and push the top of the thread through it then secure with a knot at the back. You can pop a little sticker on the inside if you want to disguise it but as long as your knot is neat it looks fine. That's your basic card done, you can add a bow at the top of the dandle embellishment if you like or you can add more decoration to the pieces. You could also cover the front of your card before you add your embellishment.

Have fun!



This project is for adult use only as it involves using cutting tools and using materials that may ruin clothing. Crafty Templates or anyone associated or manufacturers mentioned in the instructions can not be held responsible for any damage to personal clothing or property that may arise from the use of these projects and templates. Please read the full terms and conditions of use, which you can find on [www.craftytemplates.co.uk](http://www.craftytemplates.co.uk). You can also find contact details here if you need any further help with your templates or ideas for your cards.



www.craftytemplates.co.uk  
© L Banks 2009

## Winged Heart Card

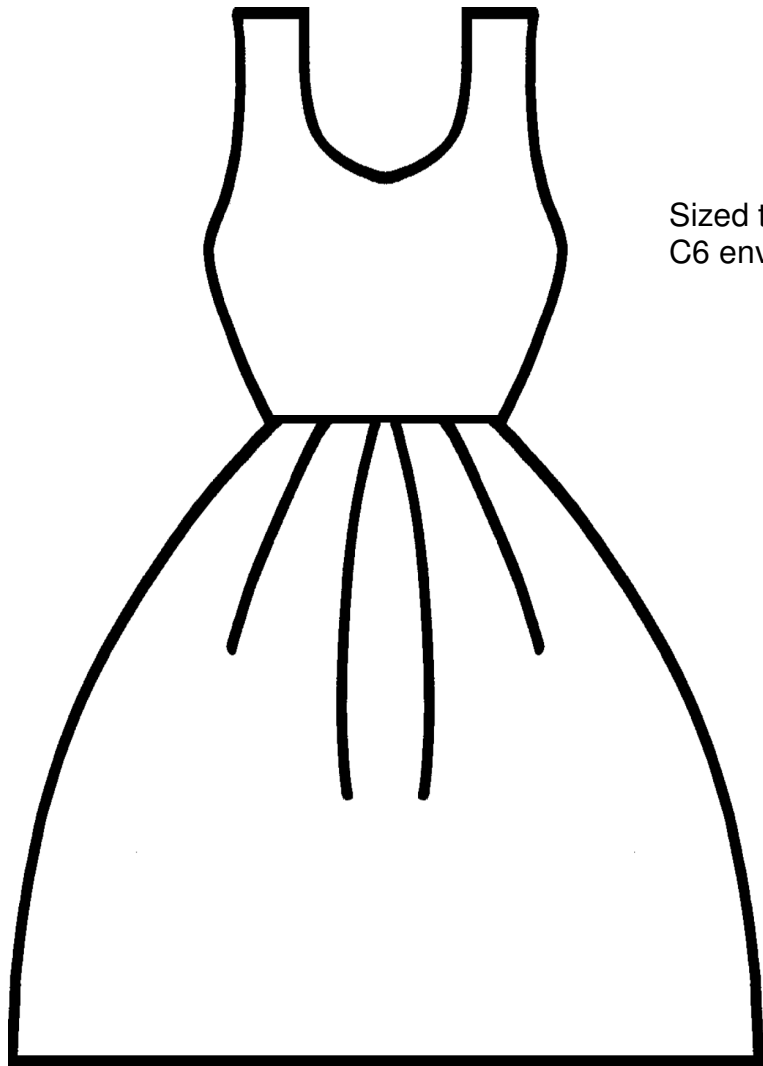
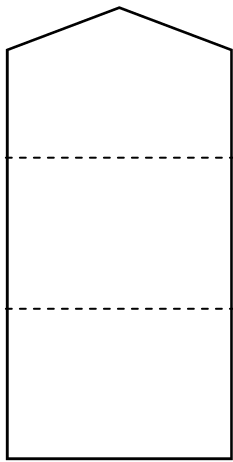
Print the template sheet out on to paper. Cut out the template, cutting around the outside line of the shape to start with. Draw around this on to a single piece of plain card and cut it out. Next take the template again and this time cut away the wings so you have the large heart shape. Draw around this on to some patterned card or paper and cut it out. Finally cut away the large heart on the template so you're left with the smallest one and draw around this on to a different card/paper and cut this one out. Layer the pieces back up together so the smaller heart goes on to p of the larger and then this goes on top of the wings. Apply to a A6 size card blank to finish your card.

Play around with different layering effects, layer up different materials and play with how you make each layer. In the card bellow the large heart shape has been made into a frame by cutting out the center heart directly from the middle of the shape and then built up on the card with foam pads. The wings have been covered with acetate that has been embossed and I added a blossom, a mini tag and a pearl to finish the card.

Have fun!



This project is for adult use only as it involves using cutting tools and using materials that may ruin clothing. Crafty Templates or anyone associated or manufacturers mentioned in the instructions can not be held responsible for any damage to personal clothing or property that may arise from the use of these projects and templates. Please read the full terms and conditions of use, which you can find on [www.craftytemplates.co.uk](http://www.craftytemplates.co.uk). You can also find contact details here if you need any further help with your templates or ideas for your cards.



Sized to fit a C6 envelope.

**Prom Dress Card**

## Prom Dress Card

You can use this template to make an embellishment for your card or to make a shaped card. To make an embellishment simply print the template sheet on to card and cut it out then decorate and stick to your card. To make a shaped card follow the instructions below.

Print off the template on to everyday printer paper. Cut out the whole dress shape.

Take a sheet of A4 card or 6x12 inch card and fold it in half. Place the dress template on the card matching up the top straps of the dress right up to the fold. Hold the template in place and draw around the shape. Keeping the card folded cut the shape out all the way around but don't cut the folded bits. When you've done you should have your shaped base card. Separate the top of the dress and the bottom on the template piece and use the top bit to make a piece to decorate the top of the dress. To make the skirt look flared out cut two of the dress shapes out from patterned paper using the skirt half of the template and cut one of them in half. Curl the edges of the paper pieces slightly with a ruler and then stick them on to your card, layering one of the halves over the whole piece. You can make a little belt with ribbon to cover over the join between the top and the skirt if you like.

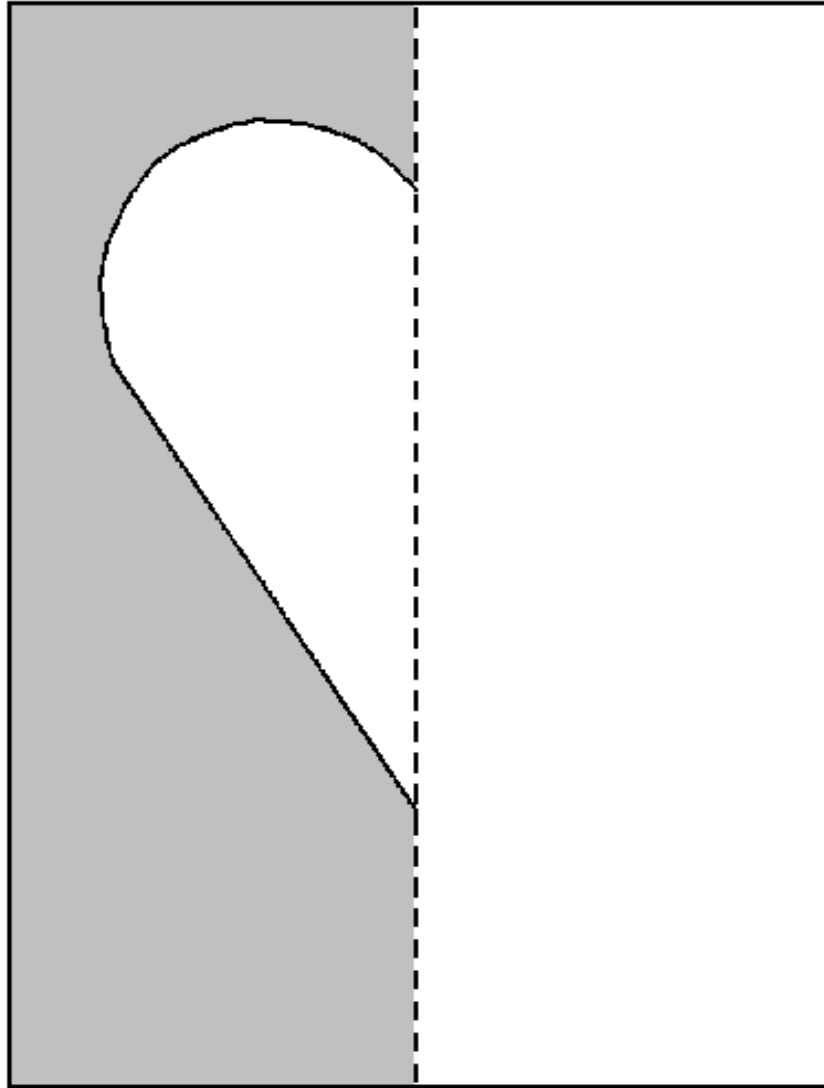
The little clutch bag is made in the same way just using the little template on the sheet to draw around and fold up then secure in place with a small brad.

Have fun!



This project is for adult use only as it involves using cutting tools and using materials that may ruin clothing. Crafty Templates or anyone associated or manufacturers mentioned in the instructions can not be held responsible for any damage to personal clothing or property that may arise from the use of these projects and templates. Please read the full terms and conditions of use, which you can find on [www.craftytemplates.co.uk](http://www.craftytemplates.co.uk). You can also find contact details here if you need any further help with your templates or ideas for your cards.

This size fits a C6 size envelope



**Pop out heart Card**

### Pop out heart card

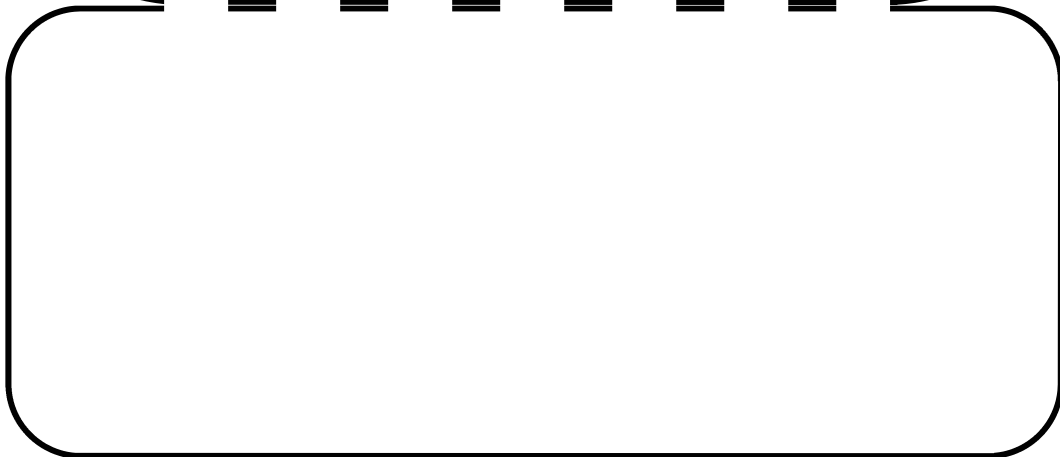
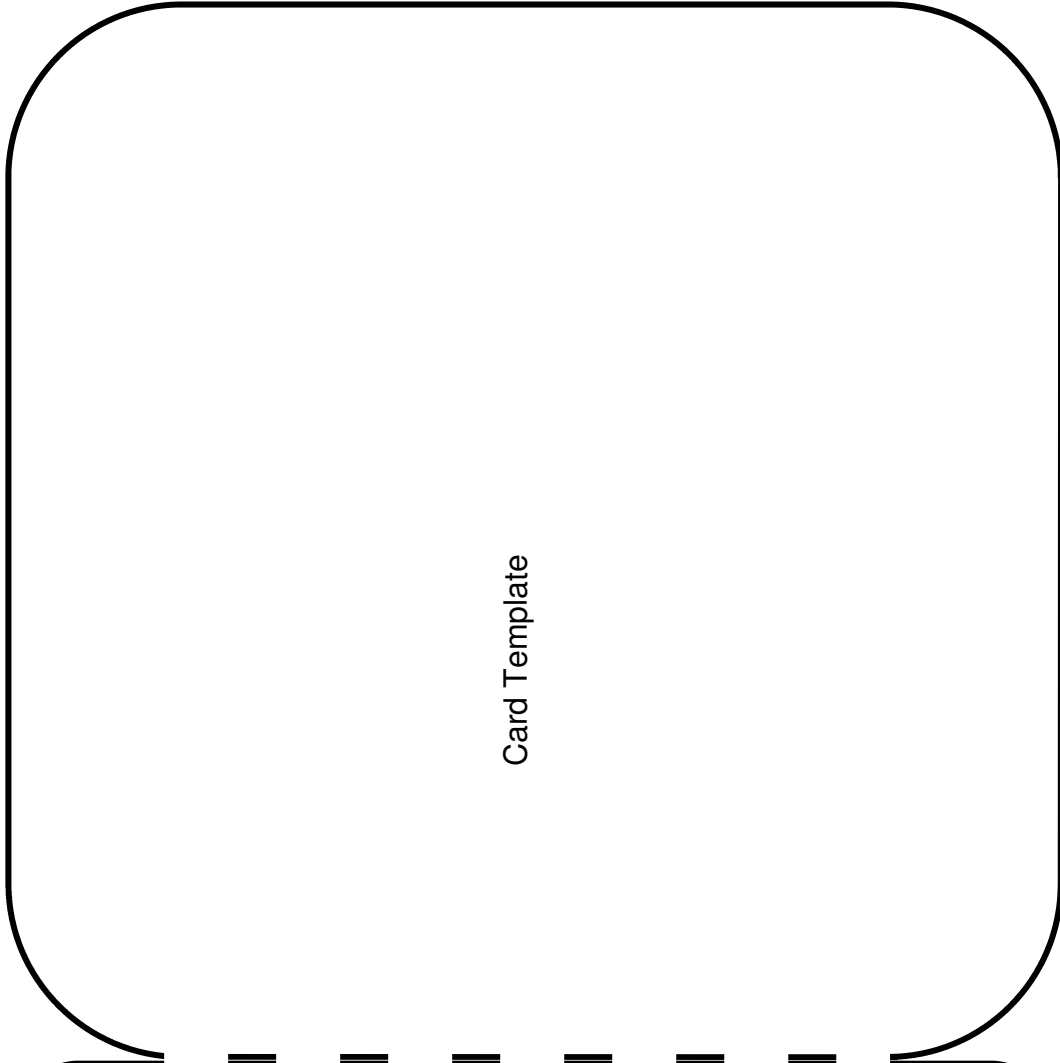
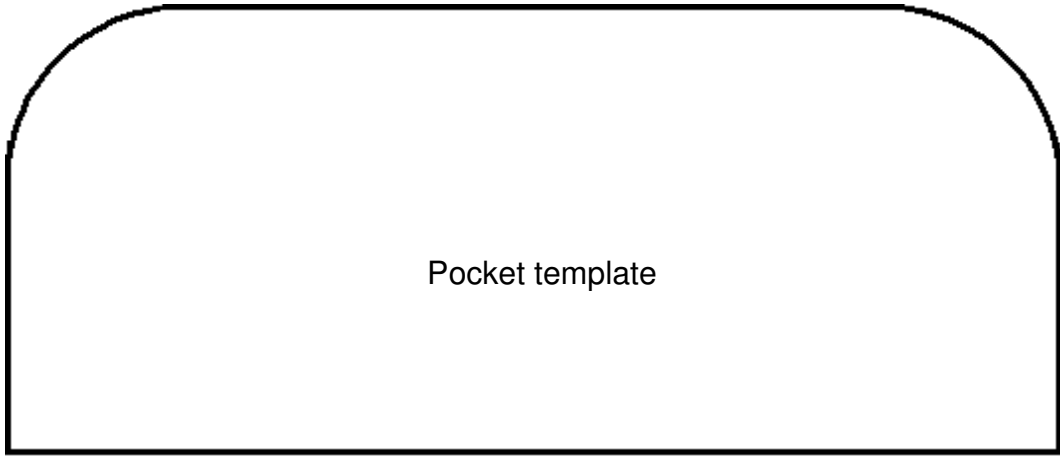
Print off the template on to everyday printer paper and cut out the template around the outside line to start with (oblong shape). Take a piece of card and draw around the oblong template shape then cut it out. Go back to your template and now cut away all the grey section on the template. Place it back on to the piece of card you cut out earlier. On the template there is a dashed line and a solid line in the shape of half a heart. You need to score along the dashed lines but the solid line needs to be cut. The easiest way to do this to score along the dashed line bits while the template sheet is still on your card and then draw around the heart shape bit. You can cut along the heart shape with a craft knife or very carefully with scissors, making a small hole at the start of the line and then cutting into the middle of the card and along the line. When you've done with this bit fold along the scored lines. The heart shape should be left behind flat at the back of the card. When you have your base card done you can decorate however you wish. You should see as you look at the card from different angles you can always see a heart shape.

Have fun!



This project is for adult use only as it involves using cutting tools and using materials that may ruin clothing. Crafty Templates or anyone associated or manufacturers mentioned in the instructions can not be held responsible for any damage to personal clothing or property that may arise from the use of these projects and templates. Please read the full terms and conditions of use, which you can find on [www.craftytemplates.co.uk](http://www.craftytemplates.co.uk). You can also find contact details here if you need any further help with your templates or ideas for your cards.

**Pocket Card**



## Pocket Card

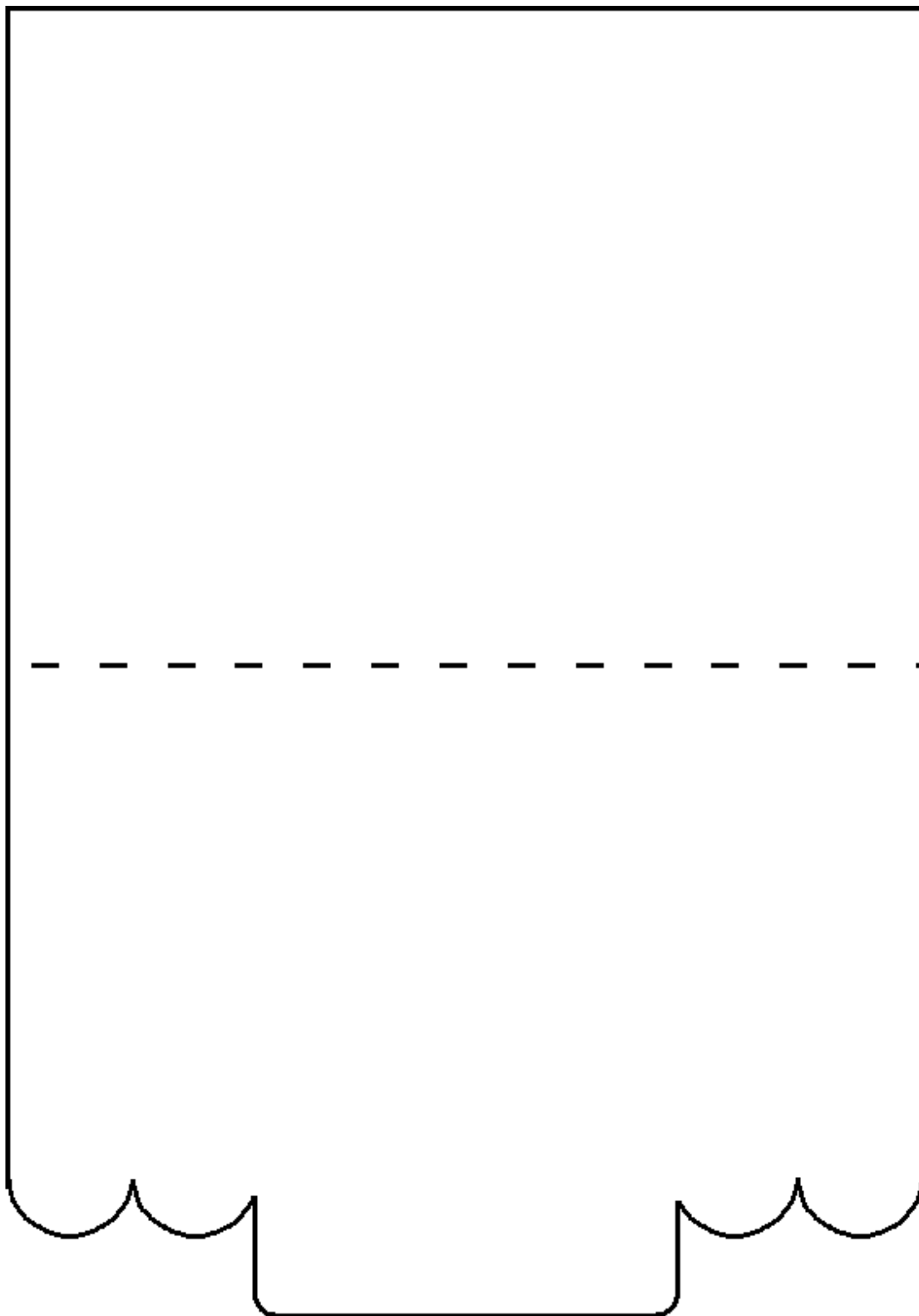
Print out the template on to paper. Cut out both shapes on the sheet. Take an A4 or a 6x12 inch piece of card and place the piece marked card template on it, draw around that and cut it out. Score a line on to your card where the dashed line is on the template and fold along it to create your base card shape. To make the pocket, draw around the pocket template on to some more of the same card, you should have enough left over from the piece you cut out earlier. Cut out the shape of the pocket. Before you secure it in place you can cover the inside of the card with patterned paper if you want to, otherwise leave it as it is. Stick the pocket onto the inside of the card in the place you would normally put your greeting. Make sure you apply adhesive to the edges of the top, bottom and right side, leave the left side for the opening. I used the sewing machine to fix my pocket on my card, it looks decorative and it works really well but you can just as easily use glue or tape. That's your basic card done. It's up to you what you pop inside the pocket it could be a photo or maybe a gift card or some money.

Have fun!



This project is for adult use only as it involves using cutting tools and using materials that may ruin clothing. Crafty Templates or anyone associated or manufacturers mentioned in the instructions can not be held responsible for any damage to personal clothing or property that may arise from the use of these projects and templates. Please read the full terms and conditions of use, which you can find on [www.craftytemplates.co.uk](http://www.craftytemplates.co.uk). You can also find contact details here if you need any further help with your templates or ideas for your cards.

**Fancy Edge Layering Card**



## Fancy Edge Layer Card

This is a great card to add your favorite stamped embellishment on to or you can make your own embellishment to go it. All you need to do is to draw around the template shape on to a piece of card, score along the place of the dashed line as indicated on the template and fold your card along the line. That's the basic card from there it's up to you what you put on.

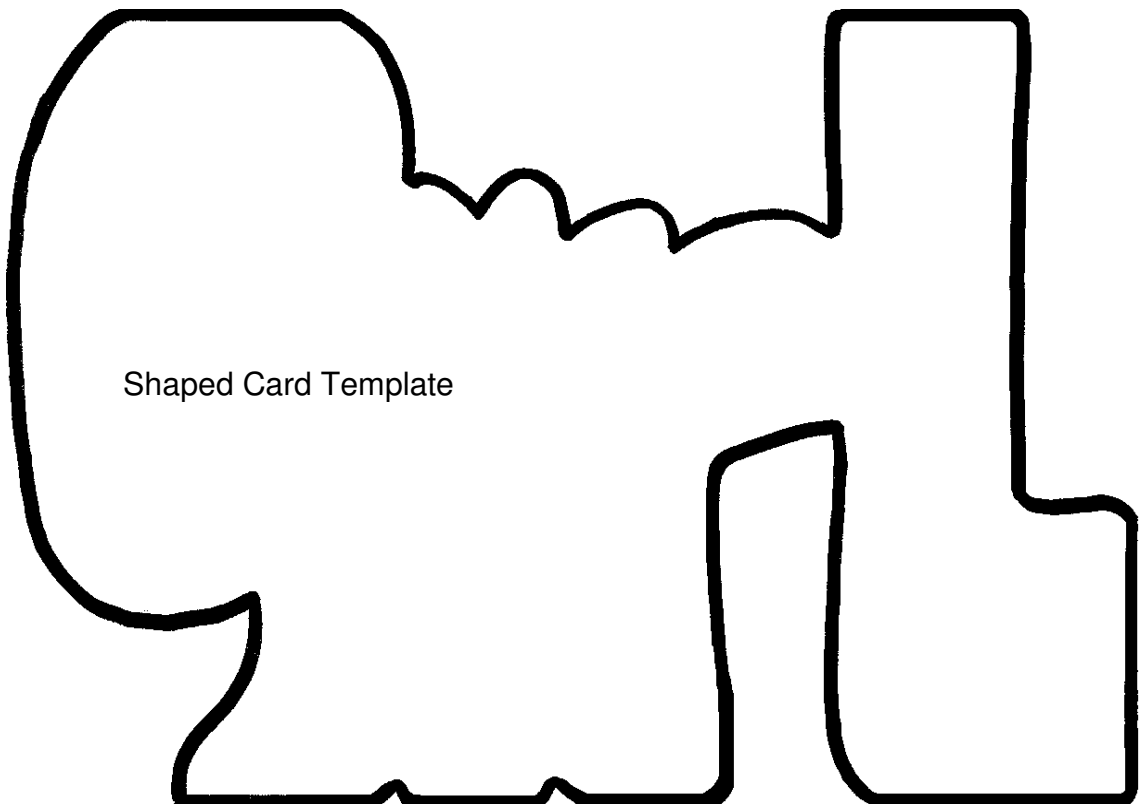
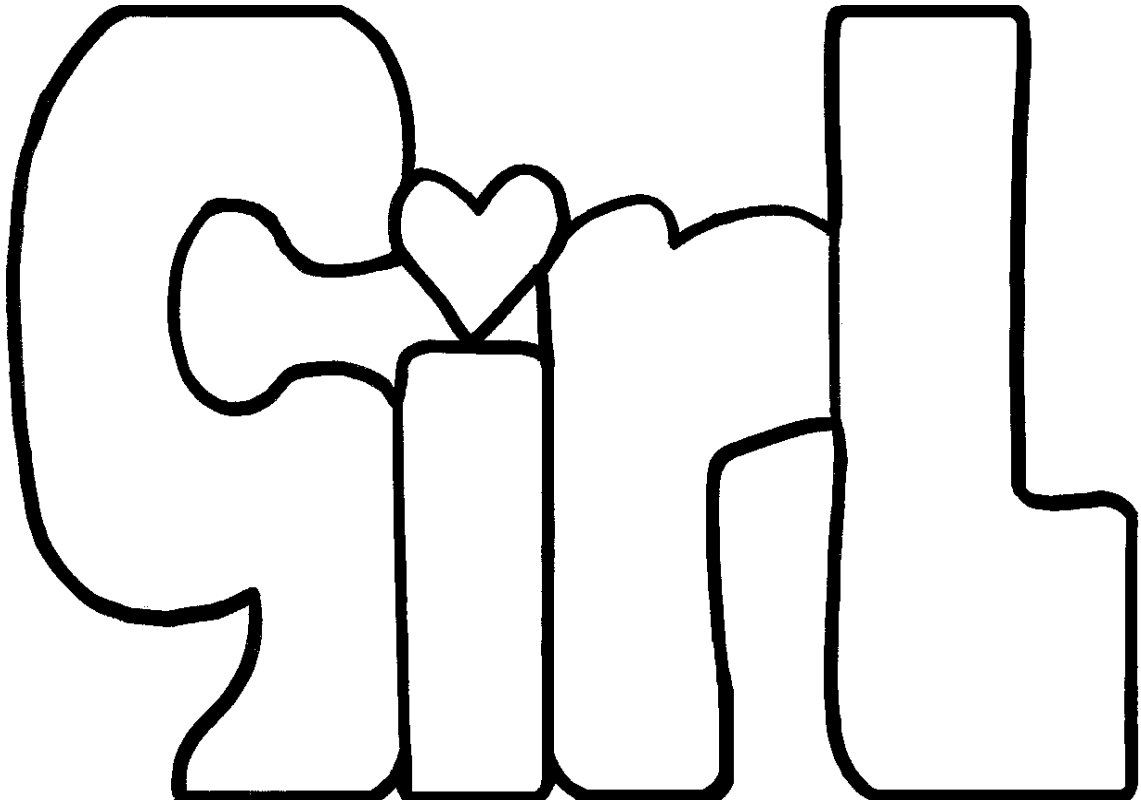
The bottom of the card has been made to look like a tab and a scalloped edge so you can add layers of paper on to the front of your card to follow these lines.

I've used paper rolling to create the layers on this card. I've gone through this technique in this months inspiration so have a look if you 're not sure how to do it, it's a fab technique to create a layering effect on your cards.

Have fun!



This project is for adult use only as it involves using cutting tools and using materials that may ruin clothing. Crafty Templates or anyone associated or manufacturers mentioned in the instructions can not be held responsible for any damage to personal clothing or property that may arise from the use of these projects and templates. Please read the full terms and conditions of use, which you can find on [www.craftytemplates.co.uk](http://www.craftytemplates.co.uk). You can also find contact details here if you need any further help with your templates or ideas for your cards.



Shaped Card Template

**Girl Word Card**

## Girl Word Card

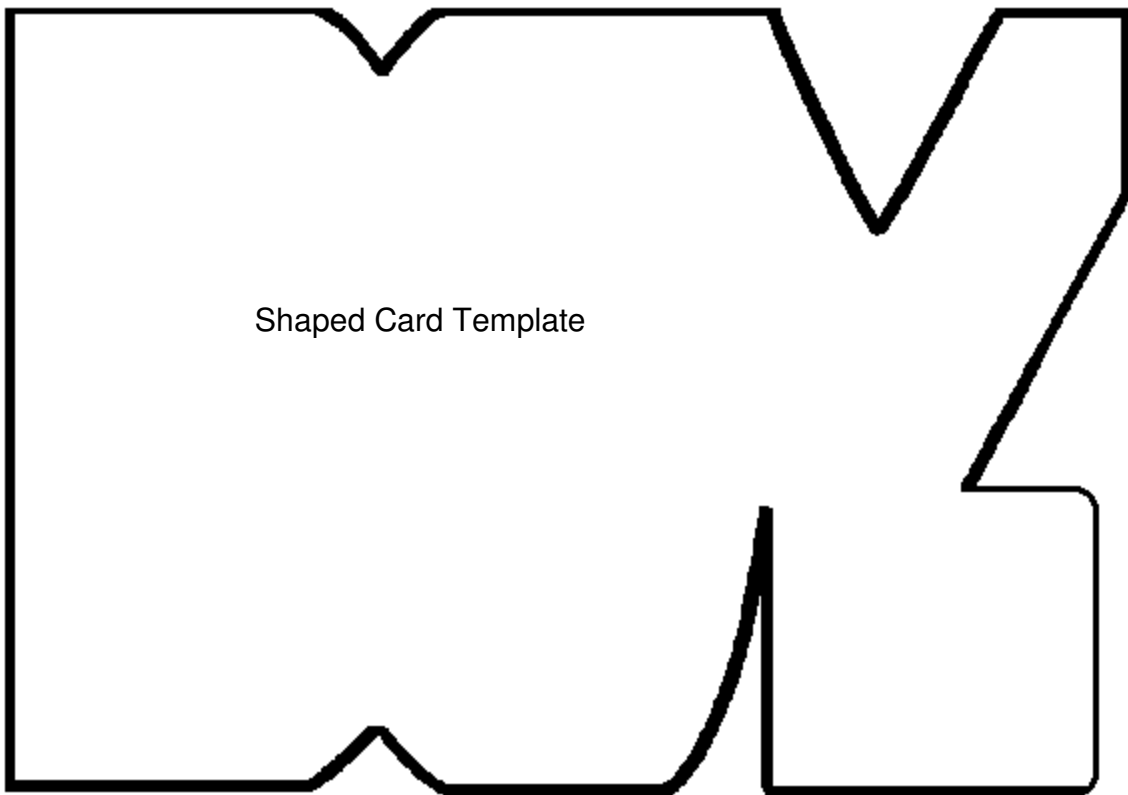
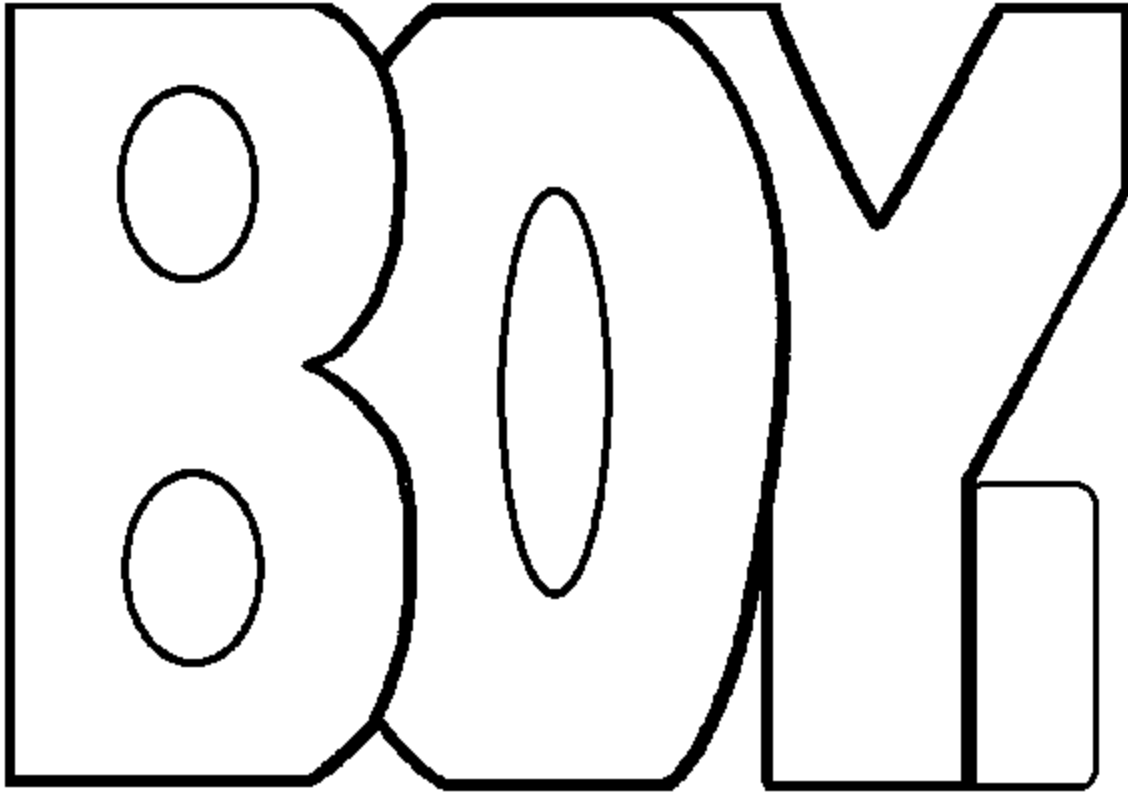
Print off the template on to everyday paper. Cut out the piece marked shaped card template on the sheet. Fold a piece of card in half (a piece large enough to fit the template on to) and place the template on the card so the top line on the template matches right up to the fold on the card. Hold it in place and draw around the shape. While keeping the card folded carefully cut out the shape. Don't cut the folded bits on the card where the shape meets the folded edge. Once you're done you should have your shaped base card finished.

Now to decorate your card you need the other template from the sheet to cut this out next, cutting around the outermost line first and then separating each letter. Choose some patterned or coloured paper/card to use, you can use one for each letter or keep them all the same. You could also decorate your own paper or card with stamps to use. Now draw around each letter on to the card or paper you've chosen to use and cut them out. You can ink or sand the edges of the letters if you like or highlight then in another way (maybe with glitter or pens etc). When you're done stick down the letters on the front of your card. The 'i' overlaps the other letters so make sure you stick this one on last. You can add a little message on your card to finish if you like. Changing the message you add and changing colours gives you lots of options of how you can use the template.

Have fun!



This project is for adult use only as it involves using cutting tools and using materials that may ruin clothing. Crafty Templates or anyone associated or manufacturers mentioned in the instructions can not be held responsible for any damage to personal clothing or property that may arise from the use of these projects and templates. Please read the full terms and conditions of use, which you can find on [www.craftytemplates.co.uk](http://www.craftytemplates.co.uk). You can also find contact details here if you need any further help with your templates or ideas for your cards.



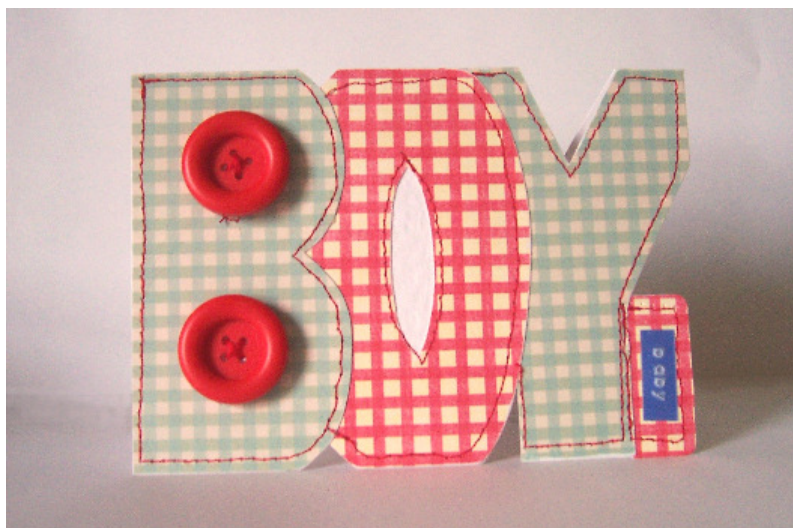
**Boy Word Card**

## Boy Word Card

Print off the template sheet on to normal printer paper. Cut out the piece marked as the shaped card template. Fold a piece of A5 card in half and place the template on it. It should match up perfectly with the edges so draw around the other parts and then keeping the card folded cut them away. Open your card out and you should have your shaped base card done.

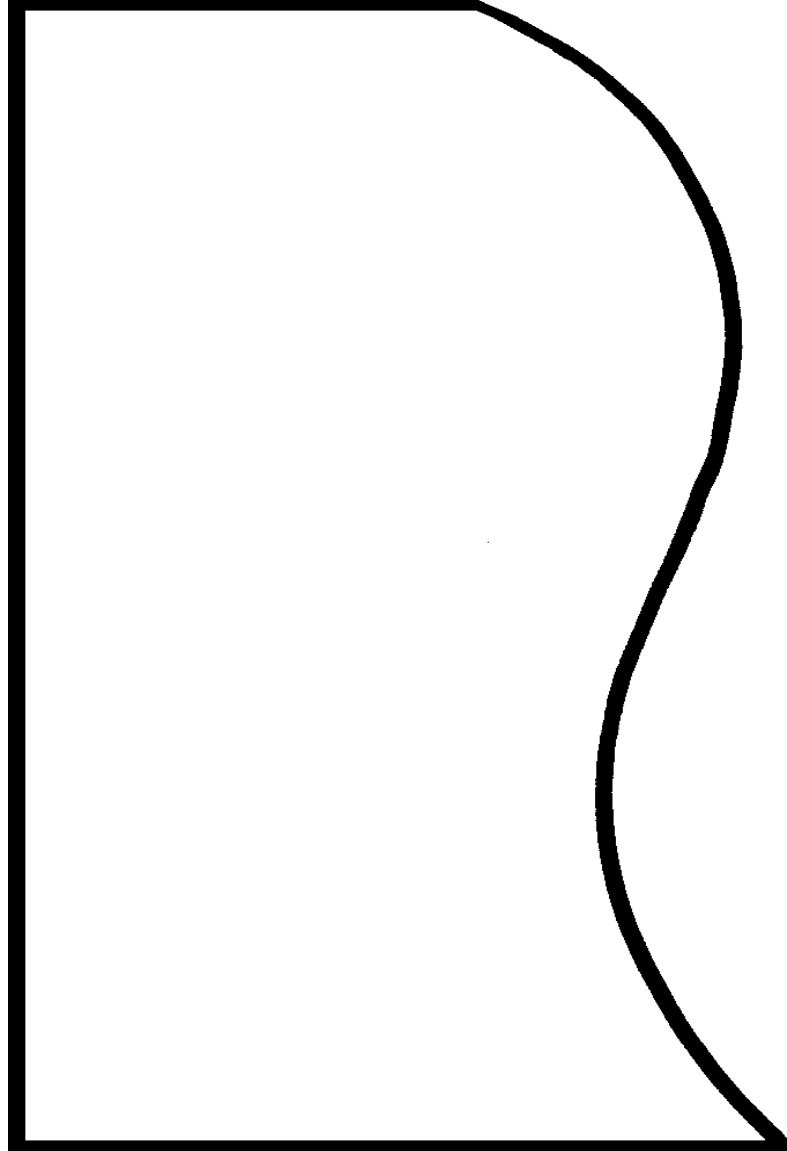
Next cut out the word template from the sheet, separate each letter and the tab and draw around them on different patterned papers. If you don't have ready made patterned papers you could use plain colours and decorate your card with a stamped image or embellishments. When you have each letter and the little tab piece cut out Stick them on to your base card making sure you work backwards so start with the tab and then the y the o and finally the b is the last layer. You can add a message onto the tab section or an embellishment. Decorate your card a little more if you like to finish it off or personalise it to the recipient.

Have fun!



This project is for adult use only as it involves using cutting tools and using materials that may ruin clothing. Crafty Templates or anyone associated or manufacturers mentioned in the instructions can not be held responsible for any damage to personal clothing or property that may arise from the use of these projects and templates. Please read the full terms and conditions of use, which you can find on [www.craftytemplates.co.uk](http://www.craftytemplates.co.uk). You can also find contact details here if you need any further help with your templates or ideas for your cards.

This size works with a A6 size card blank or a large square card blank



**Wave Edge Card**

