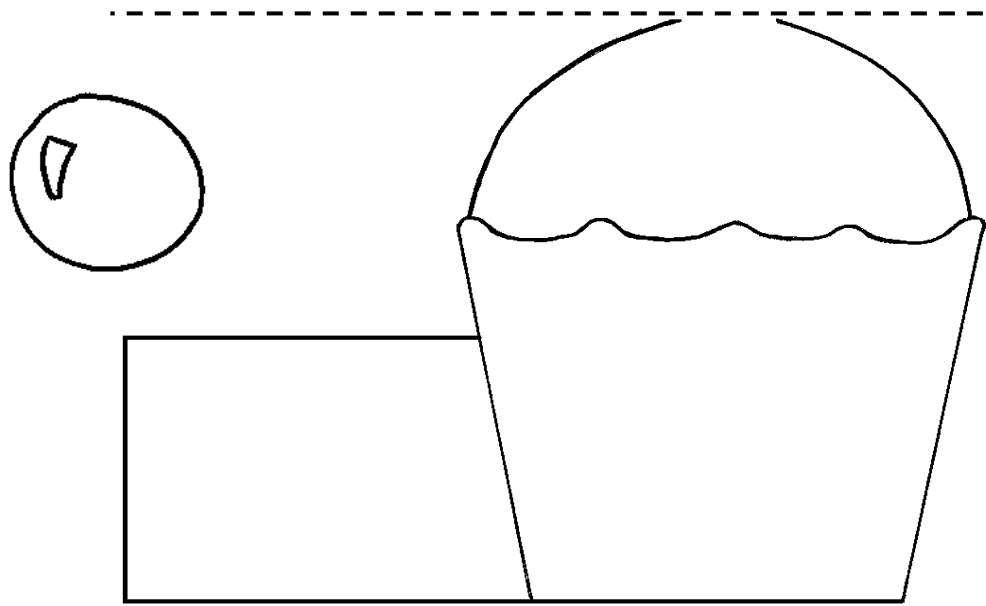
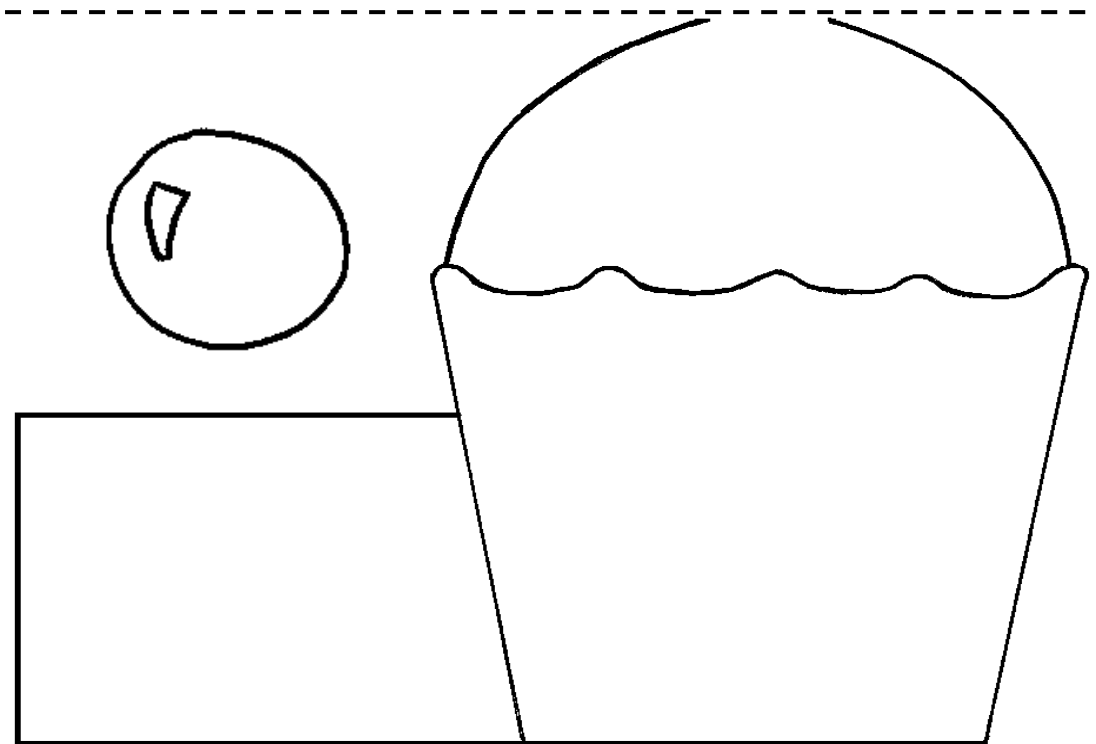


Fold Line - Match the dashed line up to the fold on your card



Fold Line - Match the dashed line up to the fold on your card



Cherry On Top Cake

Cherry On Top Card

This template sheet has two different sized cards, a mini one and a standard A6 size one. If you have the Crafty Goodies kit for July there's a mini envelope in the kit to fit the mini card. The smaller one would also make a cute place card for a party.

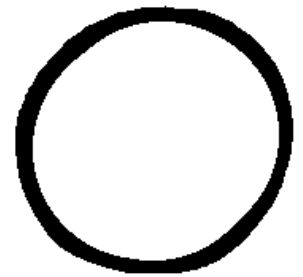
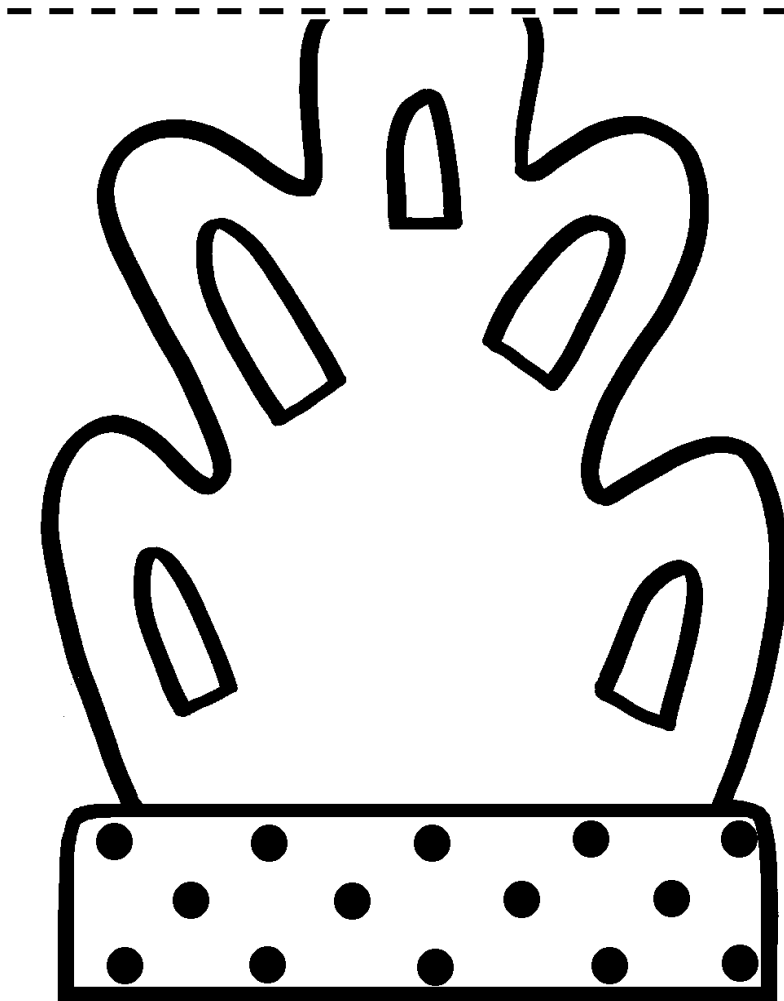
First choose which you'd like to make up and cut out that template from the sheet. Fold a sheet of card in half and place the template on it matching the dashed line on the template to the fold on your card. Draw around the shape then cut it out, keeping the card folded to create your shaped base card. Cut out the cupcake on the template and draw around the pieces of that on to patterned paper to recreate the shape. Attach to your base card and finish it off with a greeting and embellishments.

Have fun!



This project is for adult use only as it involves using cutting tools and using materials that may ruin clothing. Crafty Templates or anyone associated or manufacturers mentioned in the instructions can not be held responsible for any damage to personal clothing or property that may arise from the use of these projects and templates. Please read the full terms and conditions of use, which you can find on www.craftytemplates.co.uk. You can also find contact details here if you need any further help with your templates or ideas for your cards.

Fold Line - Match the dashed line up to the fold on your card



Goes on top of the fold
at the top of your card

Makes a C6 size card

Jelly

Jelly Card

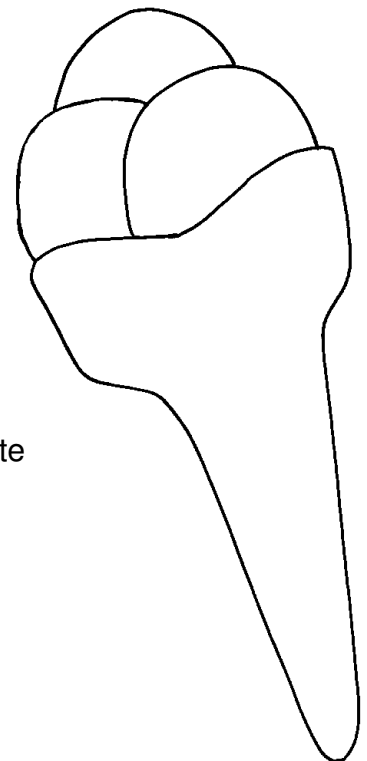
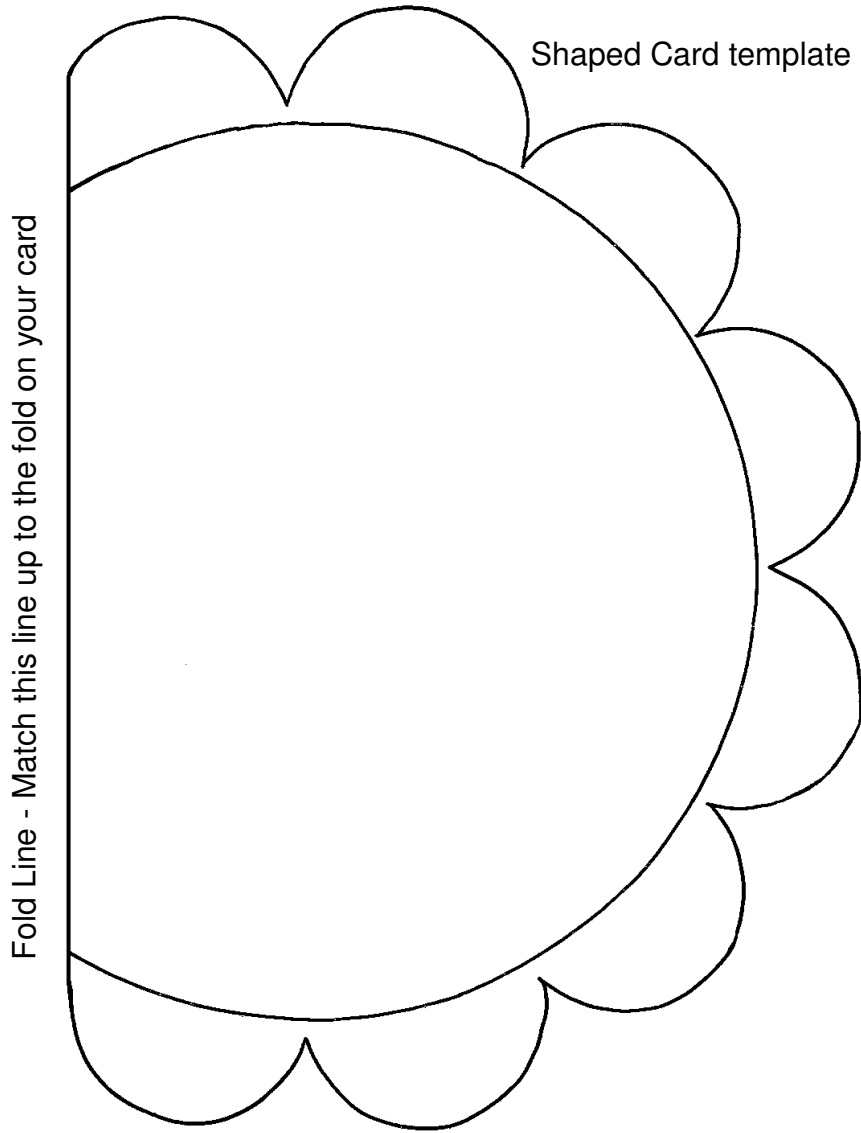
Print off and cut out the jelly card template. Cut the whole jelly shape out to start with. Fold a sheet of A4 card in half and place the template on it, matching the dashed line to the fold on the card. Draw around the shape and cut it out, keeping the card folded as you cut to create your shaped base card.

Now take the template again and cut off the 'plate' bit of the template (the dotted bit). Draw around it on to some more card and cut it out. Recreate the dots with doodles or a stamp or use patterned paper to cover it as an alternative. Next cover the whole of the front of the card with patterned paper (or plain card if you prefer) Cut out the round 'top' part of the jelly template and draw around it on to red card. Cut it out and attach it to your card so it covers up the fold. Cut out the other parts of the template on the jelly, draw around these on to white card and attach to the front of your card. Finish off with a bit of doodling on the edges and a stamped or rub on message.

Have fun!



This project is for adult use only as it involves using cutting tools and using materials that may ruin clothing. Crafty Templates or anyone associated or manufacturers mentioned in the instructions can not be held responsible for any damage to personal clothing or property that may arise from the use of these projects and templates. Please read the full terms and conditions of use, which you can find on www.craftytemplates.co.uk. You can also find contact details here if you need any further help with your templates or ideas for your cards.



Topper template

Sunshine & Ice cream

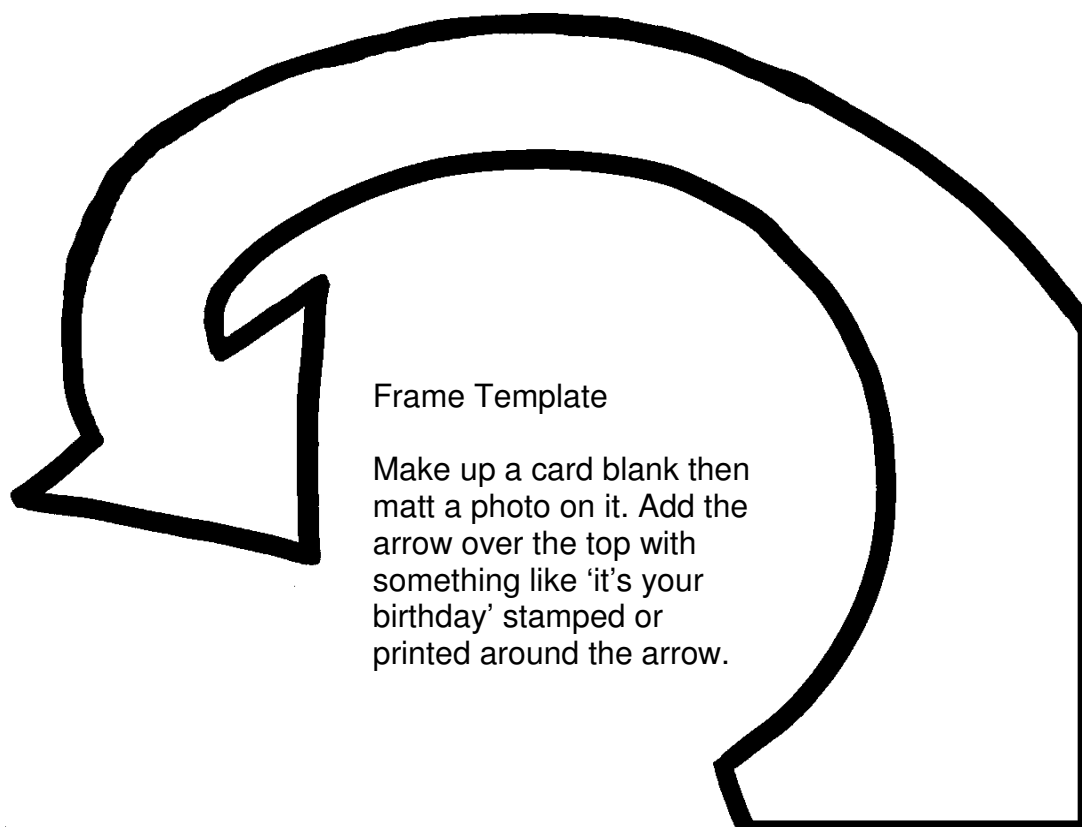
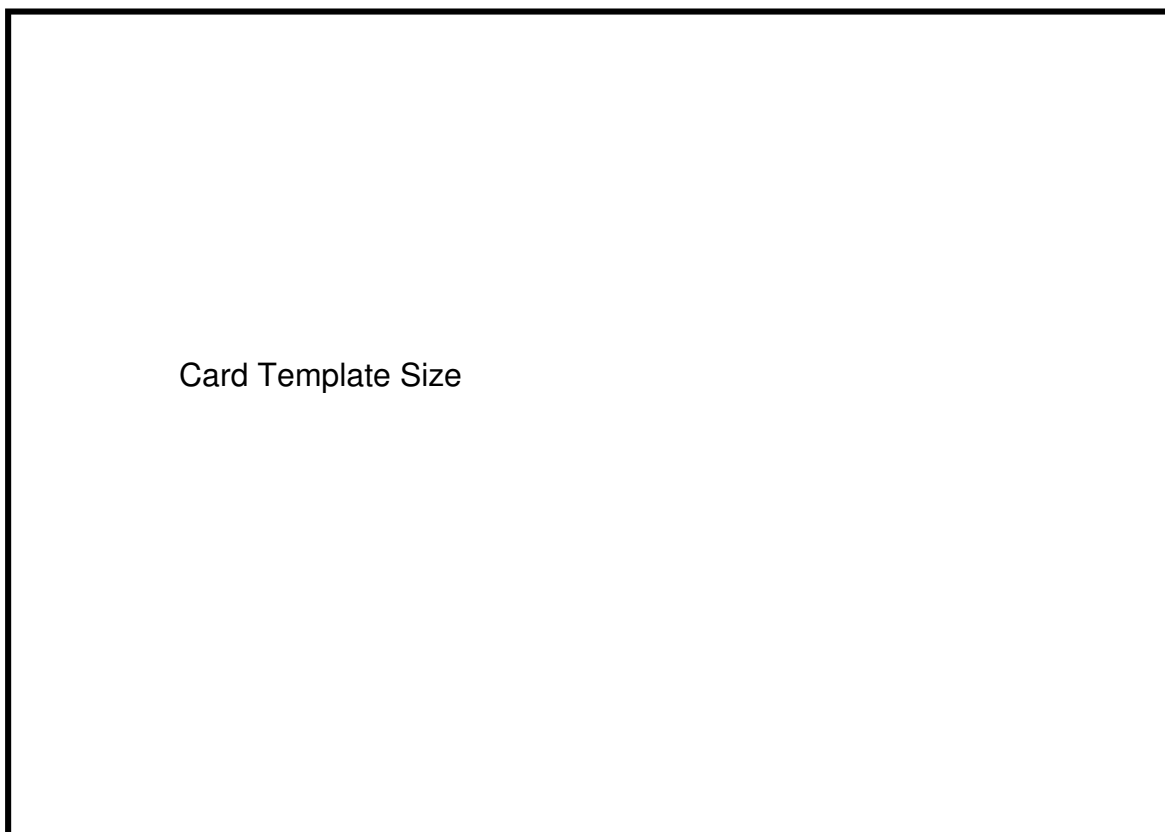
Sunshine and Ice Cream Card

Print off the template sheet and cut out both piece, cutting around the outermost lines to start with. Place the base card shape onto a folded sheet of A4 card with the dashed line on the template matched up to the fold on your card. Draw around the shape and cut it out, keeping the card folded to create your shaped base card. Next cut out the semi circle on the template sheet. Draw around it on to a different coloured card or patterned paper then cut it out. Attach it to the front of your base card. Next use the little ice cream cone template to draw around and create a embellishment for you card. Attach it to roughly the centre of you card. Add a greeting to your card to finish it off.

Have fun!



This project is for adult use only as it involves using cutting tools and using materials that may ruin clothing. Crafty Templates or anyone associated or manufacturers mentioned in the instructions can not be held responsible for any damage to personal clothing or property that may arise from the use of these projects and templates. Please read the full terms and conditions of use, which you can find on www.craftytemplates.co.uk. You can also find contact details here if you need any further help with your templates or ideas for your cards.



Arrow Frame

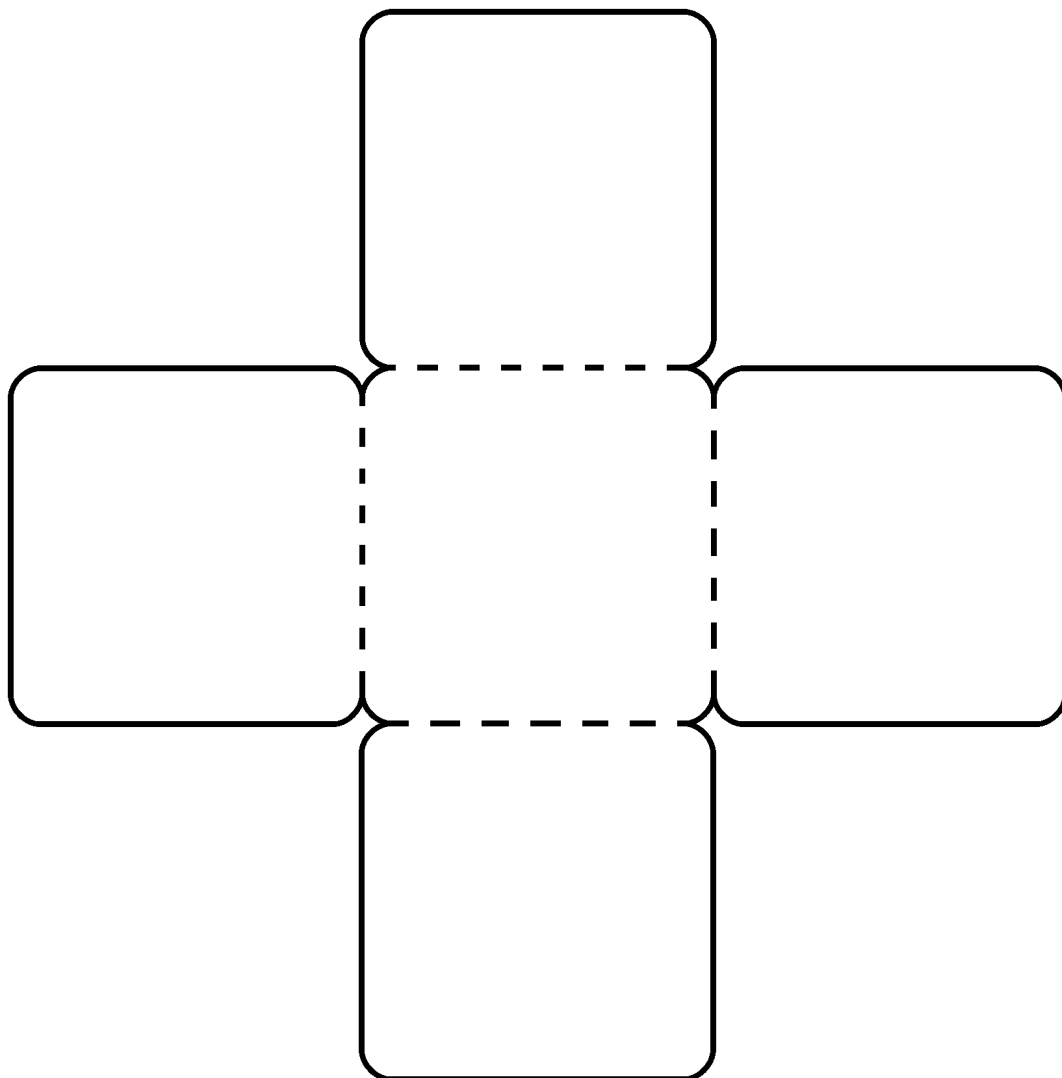
Arrow Frame Card

This is a really simple idea for a card that uses a photograph as your main embellishment. First cut out your photograph to the size of the card blank on the template sheet. Frame your photo with some plain or patterned paper. Next cut out the arrow from the template sheet. The arrows shape means it can be positioned in any or the four corners of your photo or you can position it elsewhere as Debbie chose to do in the sample bellow. Draw around the arrow on to card and cut it out. Decorate with patterned papers or however else you wish to decorate it then attach to your card as you wish. How you place the arrow will depend on where the main focus of your photo is, make sure your arrow 'points' at the subject of your photo. Stamp or use alphabet stickers your message on the arrow. How about "It's your birthday!" or "Look who is 18" etc.

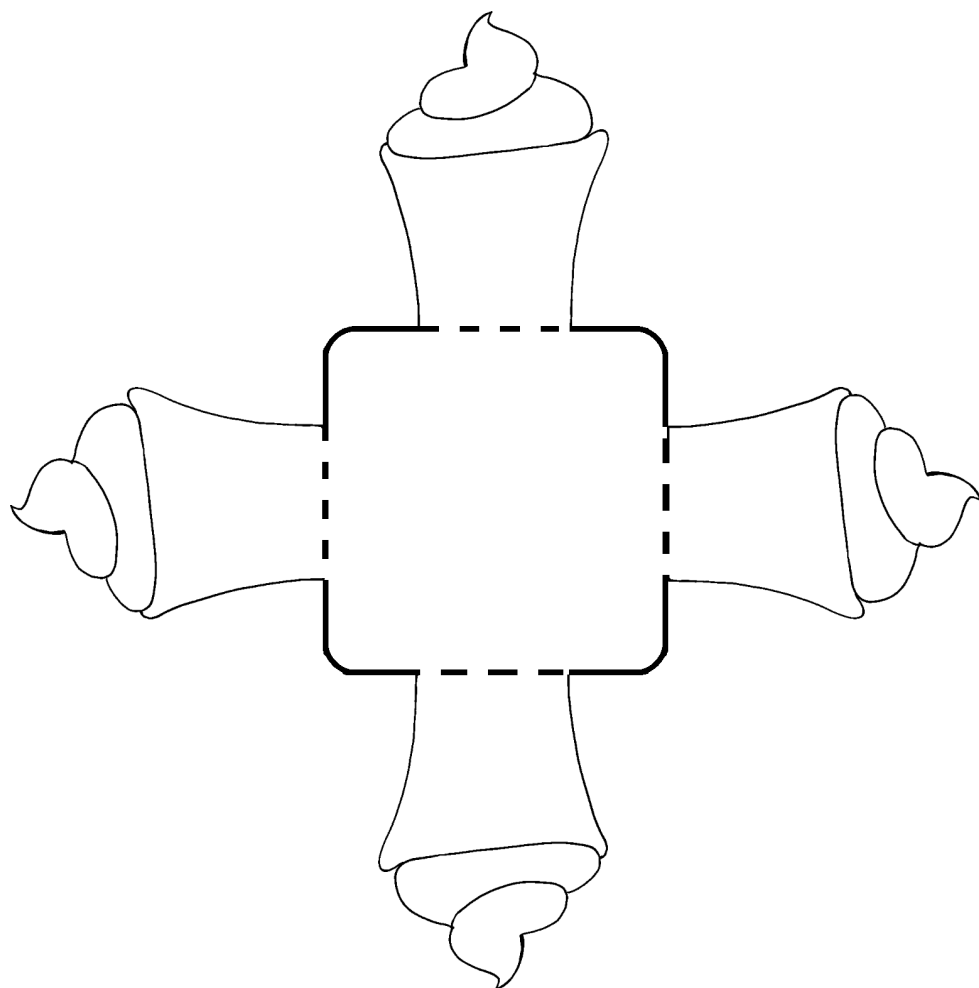
Have fun!



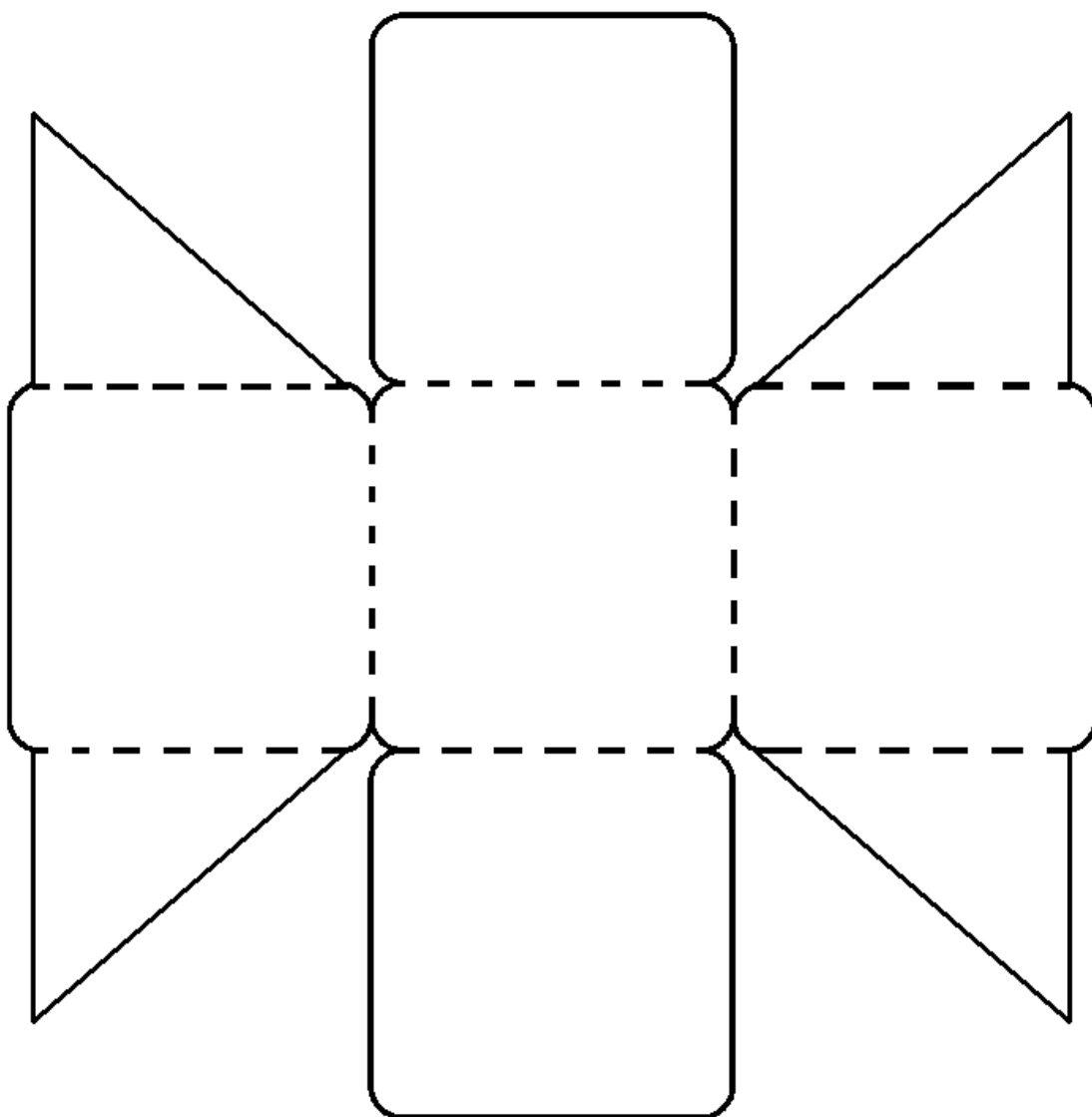
This project is for adult use only as it involves using cutting tools and using materials that may ruin clothing. Crafty Templates or anyone associated or manufacturers mentioned in the instructions can not be held responsible for any damage to personal clothing or property that may arise from the use of these projects and templates. Please read the full terms and conditions of use, which you can find on www.craftytemplates.co.uk. You can also find contact details here if you need any further help with your templates or ideas for your cards.



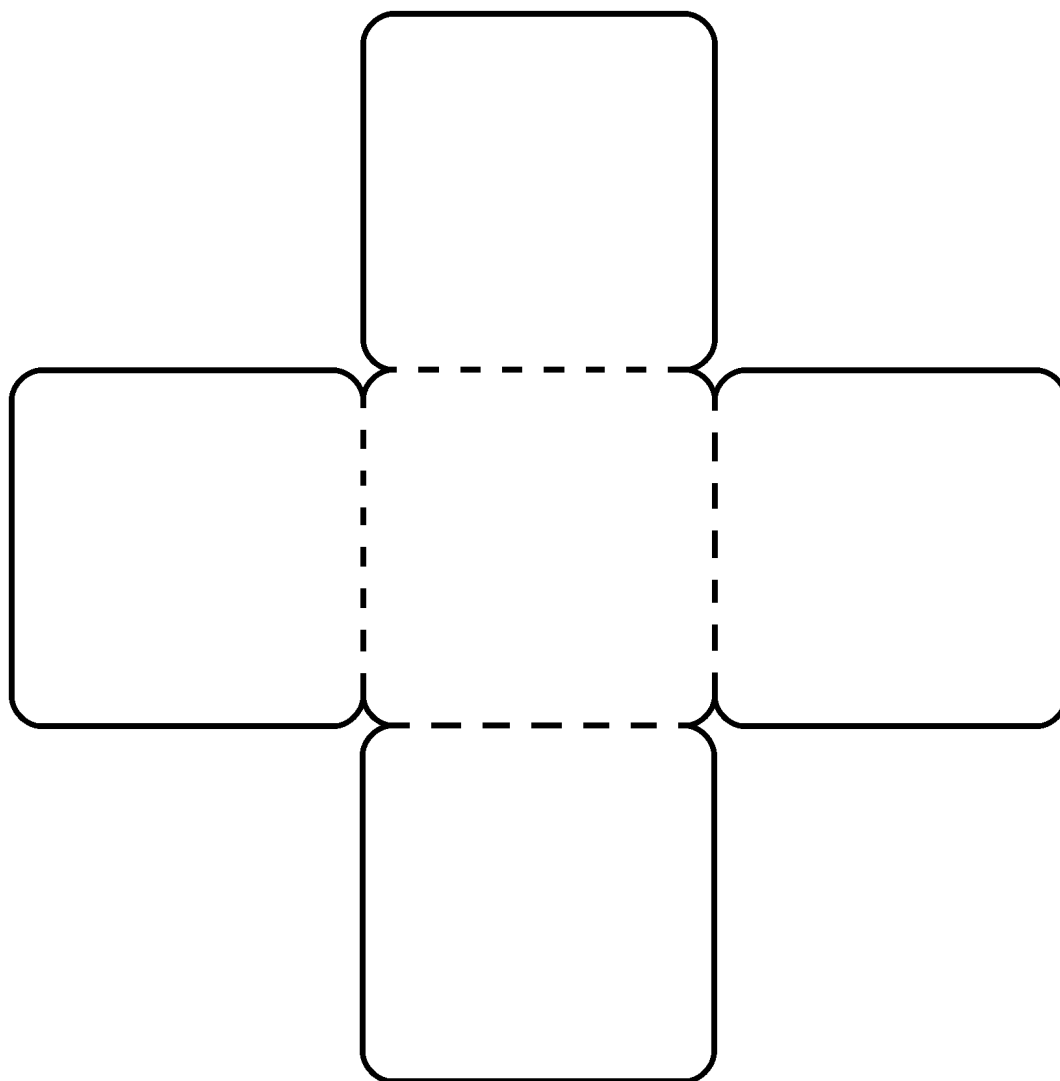
Cupcake Exploding box - 1st Layer



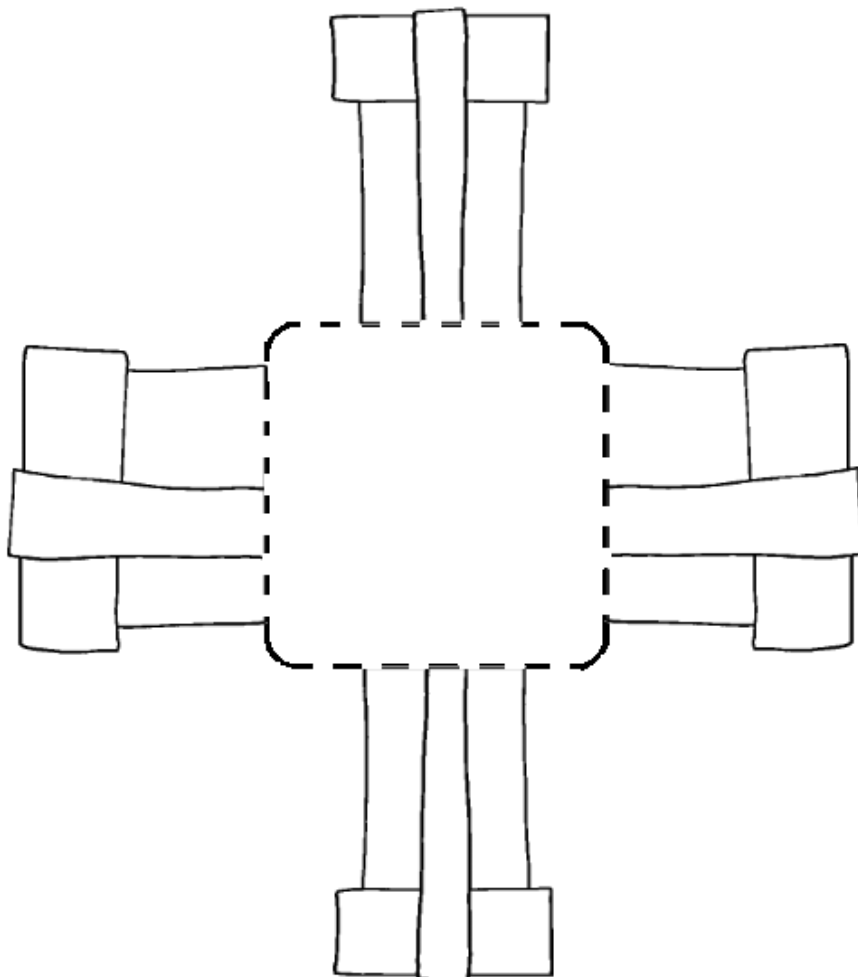
Cupcake Exploding box - 2nd layer



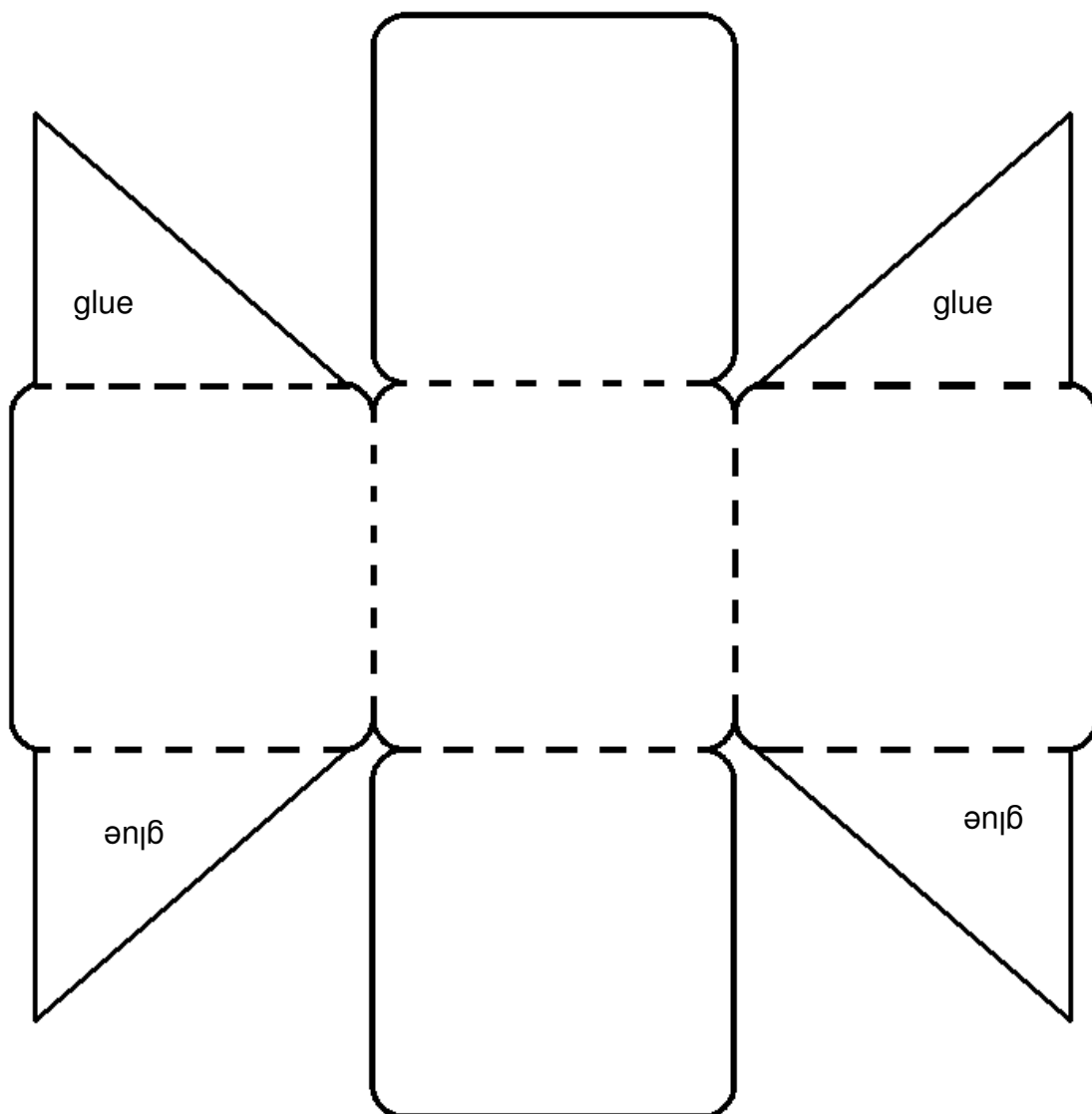
Cupcake Exploding box - Lid



Gift Boxes Exploding Box - Layer 1



Gift Boxes Exploding Box - Layer 2



Gift Boxes Exploding Box - Lid

Gift Boxes and Cup cake Mini Exploding Box

There are two different templates one featuring mini cupcakes and one with little gift boxes. Both boxes are made up in the same way so you can choose which you'd like to make up or make up both.

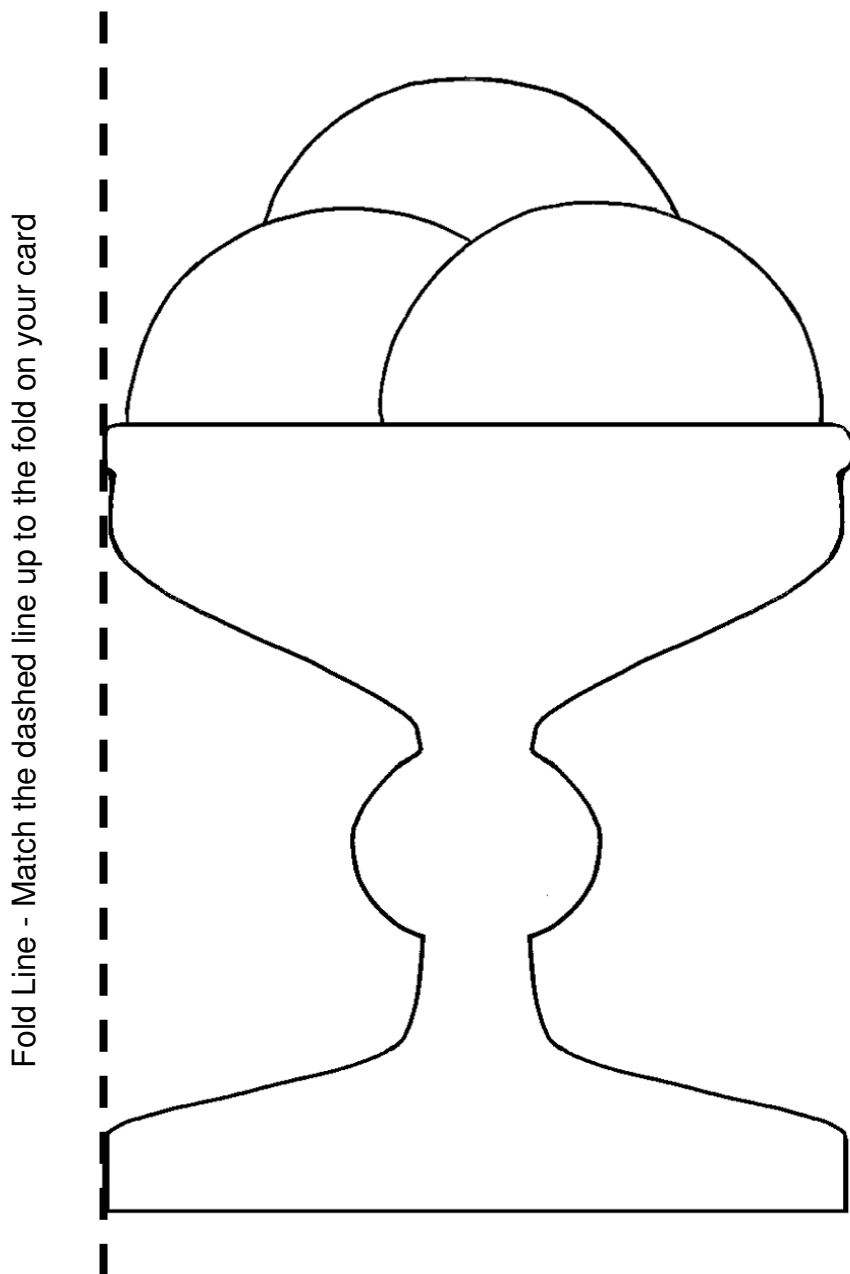
If you want to make up the cupcake version print off the cupcake template sheets on pages 9-11 or the mini gift box version is on pages 12-14.

Cut out the first layer and draw around it on to some coloured card. Cut it out and score along the place of the dashed lines on the template on to the card. That's the first layer done. Next cut out the second layer template and draw around that on to coloured card. Score along the dashed lines again as before. Decorate the shapes around the layer with patterned papers etc. Now attach this layer to the first layer, applying glue to the centre square on the first layer and apply the second layer on top. You can pop something in the middle too at this stage if you like or you can fill your box with sweets or another little goodie. Finally you can use the lid template to make up the lid. Cut out the template then draw around it on to card. Score along the place of the dashed lines, cut out the shape and then along the lines. Apply glue as shown on the template, fold the triangle pieces and stick them to the inside of the box to create the square shape. You can decorate the lid a little if you like. Once finished fold up all the inside layers of your box and slide the lid over the top, leaving a gap before it reaches the bottom so the lid can be easily removed.

Have fun!



This project is for adult use only as it involves using cutting tools and using materials that may ruin clothing. Crafty Templates or anyone associated or manufacturers mentioned in the instructions can not be held responsible for any damage to personal clothing or property that may arise from the use of these projects and templates. Please read the full terms and conditions of use, which you can find on www.craftytemplates.co.uk. You can also find contact details here if you need any further help with your templates or ideas for your cards.



Sundae

Sundae Card

Print off the Sundae template sheet and cut out the sundae shape, cutting around the outermost line only. Fold a piece of A5 card in half to create an A6 size card blank (or use a ready made one). Place the sundae template on it matching the position of the dashed line on the template sheet to the fold on your card and matching up the bottom edge of the template to the bottom edge of your card, draw around the shape. Un fold the card and just cut out the sundae shape from the front of your card. Re fold your card. Cover the back of the inside of your card with patterned paper.

Take the sundae template again and draw around it on to coloured card. Cut out the ice cream bits on the template and draw around these on to different patterned papers or colours of card. Attach the decorated sundae on to the front of your card.

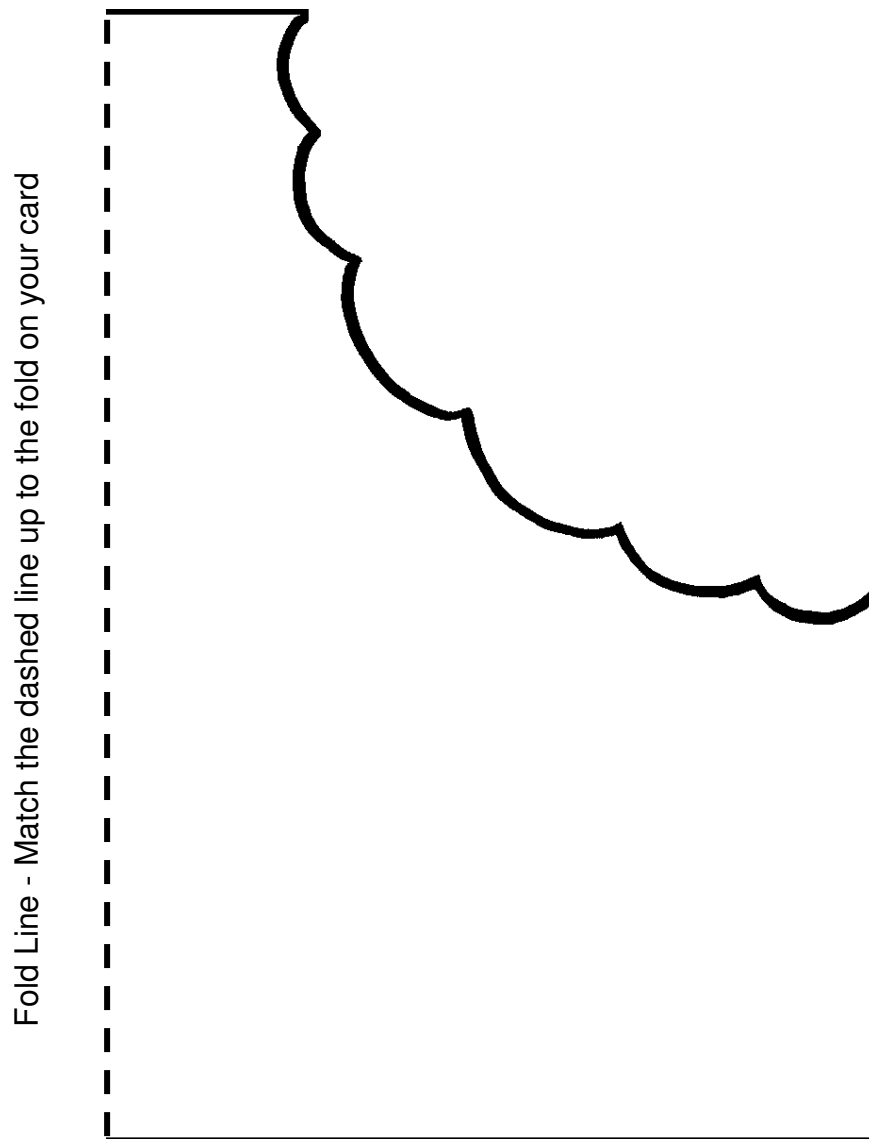
Finish off your card with a stamp or a rub on greeting.

Have fun!



This project is for adult use only as it involves using cutting tools and using materials that may ruin clothing. Crafty Templates or anyone associated or manufacturers mentioned in the instructions can not be held responsible for any damage to personal clothing or property that may arise from the use of these projects and templates. Please read the full terms and conditions of use, which you can find on www.craftytemplates.co.uk. You can also find contact details here if you need any further help with your templates or ideas for your cards.

Bite Out Card



Bite Out Card

There are lots of different ways you can style this card but I chose to decorate the front of the card like a piece of cake so the bite is out of the card because it looks so delicious!

To make the card first print off the template and cut it out. Make an A6 size card blank from a folded sheet of A5 card or use a pre-made card blank. Place the template on the card blank matching up the bottom edge and the dashed line on the template up to the fold. Draw around the template shape. Unfold the card and cut the shape from just the front of the card. Cover the inside of the card with patterned paper or plain paper decorated with stamps/doodling. Decorate the front of your card as you wish to finish. You can go for a look of a cake or maybe a giant cookie or you can pick a different theme, perhaps dinosaurs or monsters!

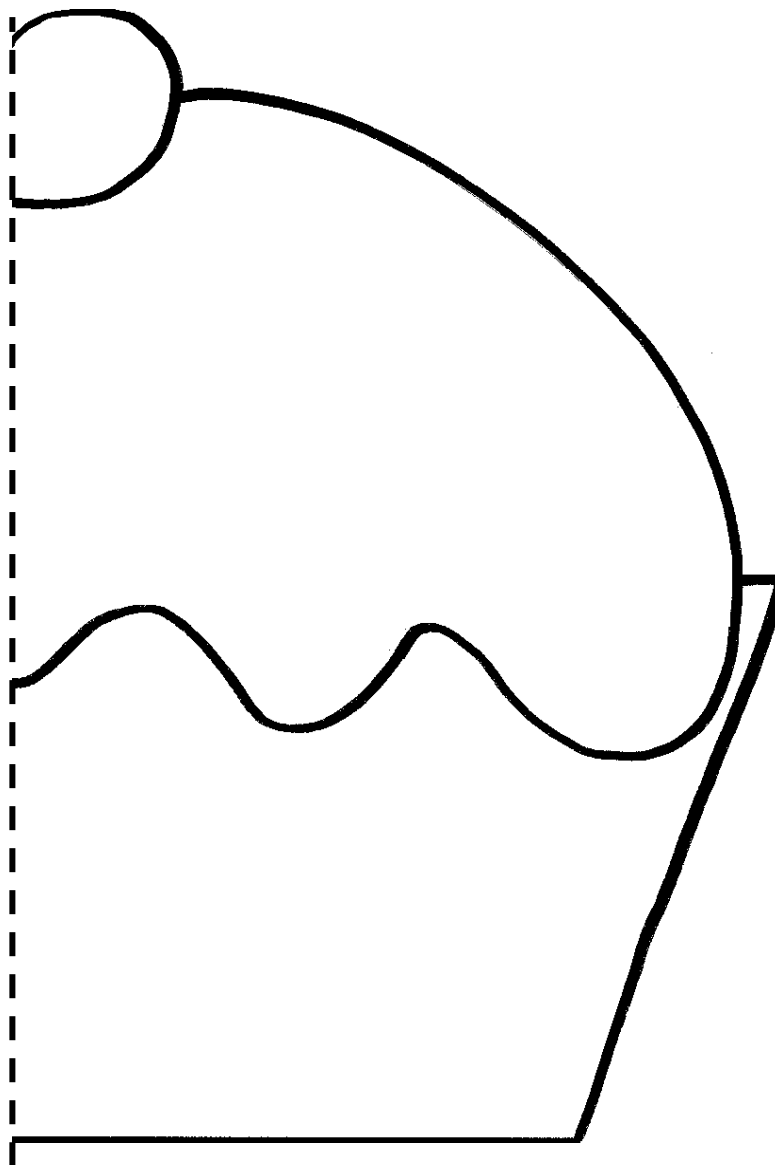
Have fun!



This project is for adult use only as it involves using cutting tools and using materials that may ruin clothing. Crafty Templates or anyone associated or manufacturers mentioned in the instructions can not be held responsible for any damage to personal clothing or property that may arise from the use of these projects and templates. Please read the full terms and conditions of use, which you can find on www.craftytemplates.co.uk. You can also find contact details here if you need any further help with your templates or ideas for your cards.

Half Cake Card

Fold Line - Match the dashed line up to the fold on your card



Half Cake Card

Print off the half cake template and cut it out. Make an A6 size card blank from an A5 sheet of card or use a pre-made one. Place the template on the card blank matching up the bottom edges and the dashed line up to the fold. Draw around the template shape. You can choose to cut the card folded to create the whole shaped card or you can cut out just the front of the card.

Use the template to cut out the 'icing' and the cake case then draw around them on to patterned paper or plain paper you've decorated with stamps/doodling etc.

Attach the decorated pieces to your card front to finish.

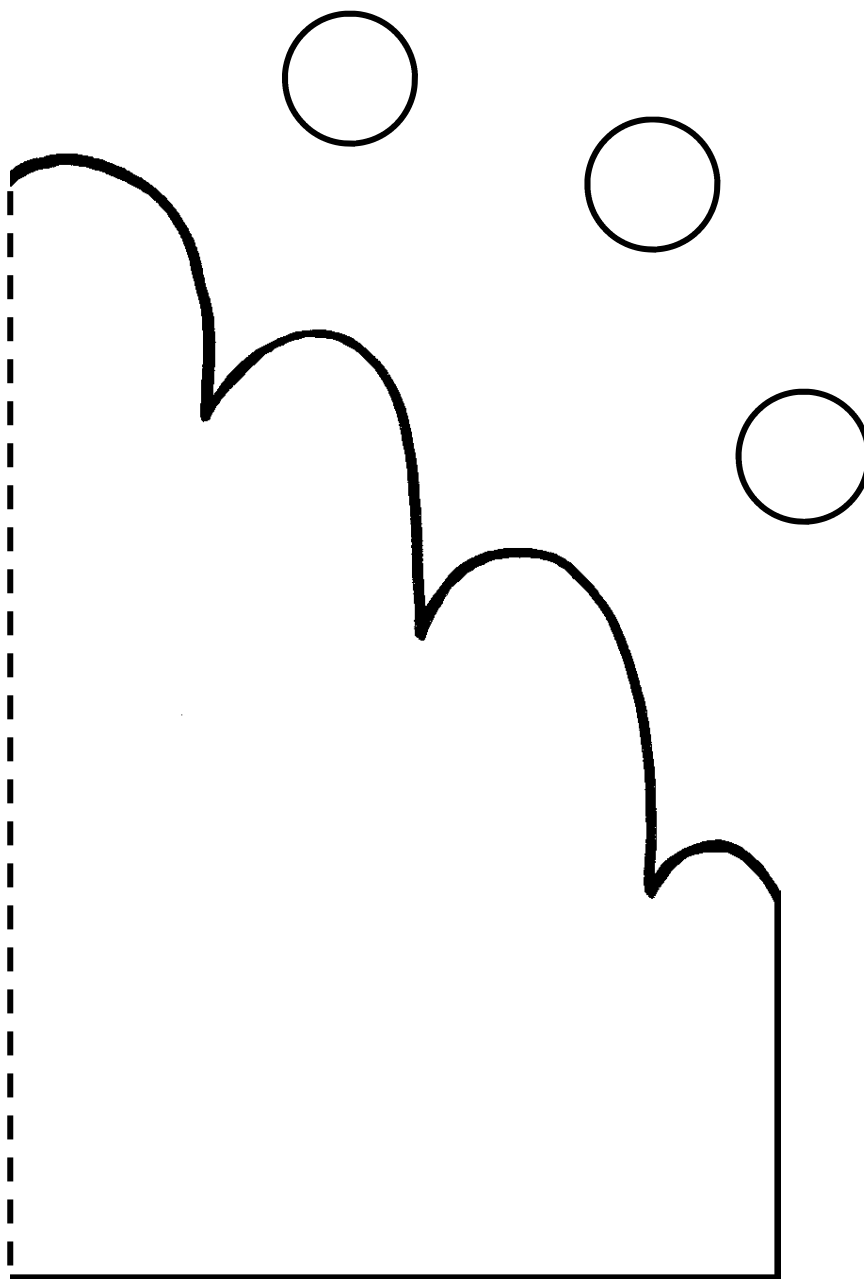
Have fun!



This project is for adult use only as it involves using cutting tools and using materials that may ruin clothing. Crafty Templates or anyone associated or manufacturers mentioned in the instructions can not be held responsible for any damage to personal clothing or property that may arise from the use of these projects and templates. Please read the full terms and conditions of use, which you can find on www.craftytemplates.co.uk. You can also find contact details here if you need any further help with your templates or ideas for your cards.

Half Jelly Card

Fold Line - Match the dashed line up to the fold on your card



Half Jelly Card

Print off the half jelly template and cut it out. Make an A6 size card blank from an A5 sheet of card folded or use a pre-made one. Place the template on the card blank matching up the bottom edges and the dashed line up to the fold. Draw around the template shape. You can choose to cut the card folded to create the whole shaped card or you can cut out just the front panel of the card.

Decorate the jelly shape on the front of your card with patterned paper or plain paper you've decorated with stamps/doodling or embellishments like beads/buttons.

Have fun!



This project is for adult use only as it involves using cutting tools and using materials that may ruin clothing. Crafty Templates or anyone associated or manufacturers mentioned in the instructions can not be held responsible for any damage to personal clothing or property that may arise from the use of these projects and templates. Please read the full terms and conditions of use, which you can find on www.craftytemplates.co.uk. You can also find contact details here if you need any further help with your templates or ideas for your cards.