

Monster Card

Monster Card

This is a fun card to make for children's birthdays. To make them landscape like the example shown you will need sheet of card that's 4x12 inches there are some in this months kit or you can use a sheet of Bazzill cardstock cut down to size. You can also use the monster shape as a card topper and attach him to a standard A6 card.

To make the shaped card print out the template and cut it out. Cut out a piece of card measuring 4" x 6" and fold it in half. Place the template on it and draw around the shape. Cut out the shape keeping the card folded then open out the card and snip off the eye shapes from the back panel of the card so they're just popping out from the top of the front of your card.

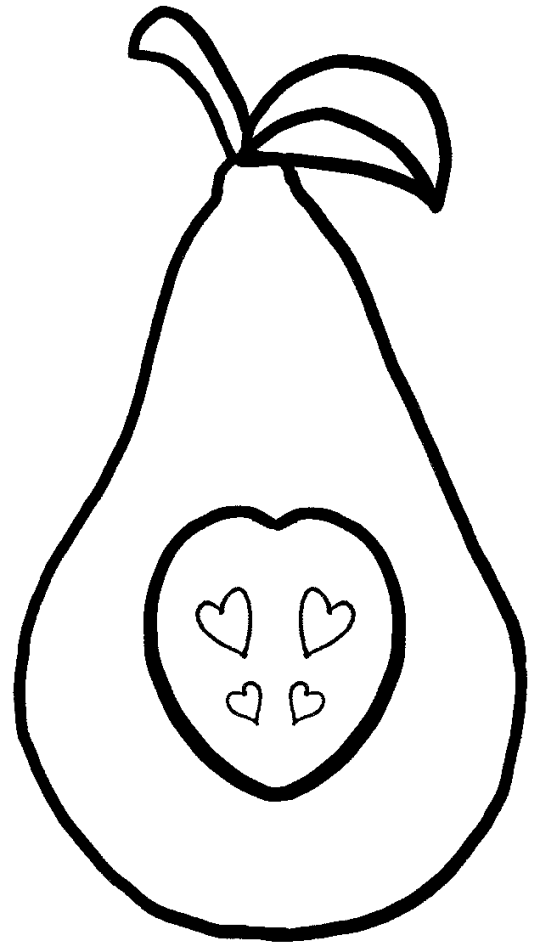
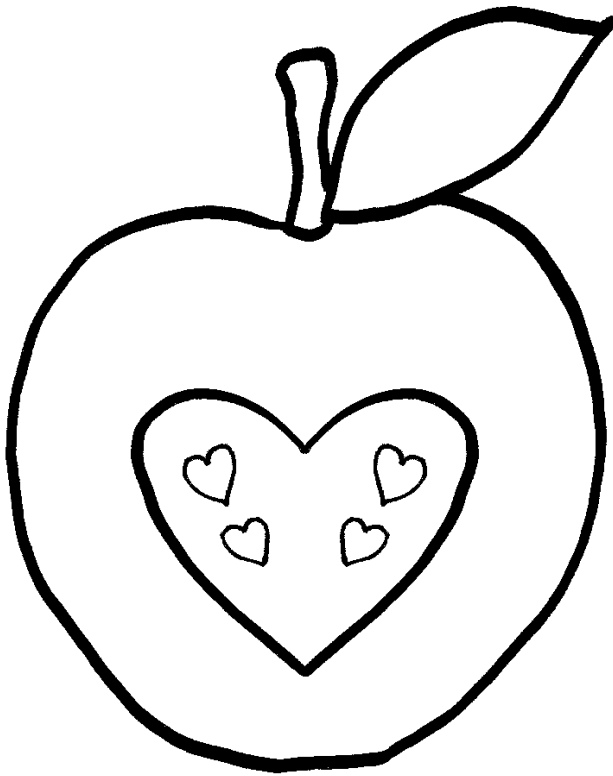
Use the template to decorate your card by cutting out the monsters features and drawing around each piece on to coloured card, cutting them out and positioning them on the front of your card. Finish off by adding a fun message to the inside of your card something like 'for a special little monster' or 'have a monster birthday!'

The finished card will fit in a standard A6 size envelope.

Have fun!

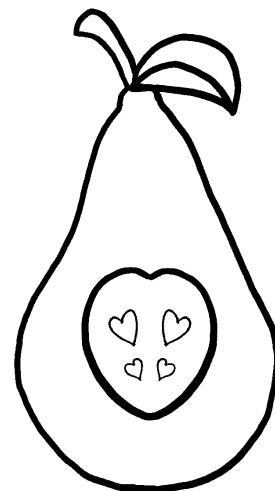
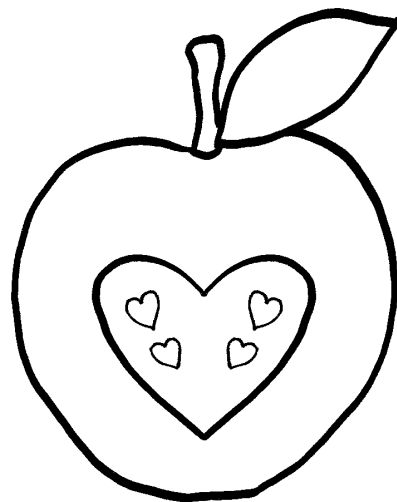


This project is for adult use only as it involves using cutting tools and using materials that may ruin clothing. Crafty Templates or anyone associated or manufacturers mentioned in the instructions can not be held responsible for any damage to personal clothing or property that may arise from the use of these projects and templates. Please read the full terms and conditions of use, which you can find on www.craftytemplates.co.uk. You can also find contact details here if you need any further help with your templates or ideas for your cards.



Use this size as one large embellishment on a A6 size card.

Apples and Pears



Use this size in multiples of 4 on a large square card (6x6) or as a mini size embellishment.

Apples and Pears Cards

This template sheet makes up embellishments that you can add to your choice of project. The project featured below the embellishments have been made into a note card set. You can use both the apple and pear or you can pick out just one of the designs. I'm going to use the apple embellishment as an example but you can apply the same method to the pear embellishment too.

To make the apple print out the template sheet and cut out the size embellishment you want to use. Pick out different colours or patterns of paper you want to use, you'll need one for the whole apple shape, one for the stalk one for the middle and one for the leaf. Keeping the apple shape whole draw around the template on to the pattern you would like your apple to be so in the sample below that would have been the red polka dot paper. Cut out this shape and put it to one side. Next take the template again and this time cut the stalk and leaf from the top. Draw around these on to your chosen card or paper and cut them out. Next cut the middle bit of the apple out of the template piece and draw around this onto another pattern and cut it out. Cut out the heart shaped pips and draw around those and cut them out. Now take the whole apple shape you cut out earlier and reassemble all the pieces you've cut out to create the decorated apple shape embellishment. Finish it off by drawing around the edges with black pen to highlight them.

From there you can attach it to your choice of card or other project.

You can make your embellishments with other materials - how about trying fabric and making a cute embellishment for a notebook cover or even a cushion?

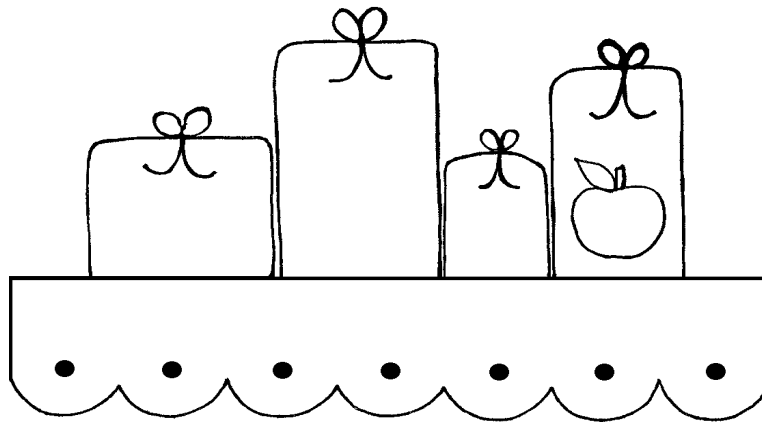
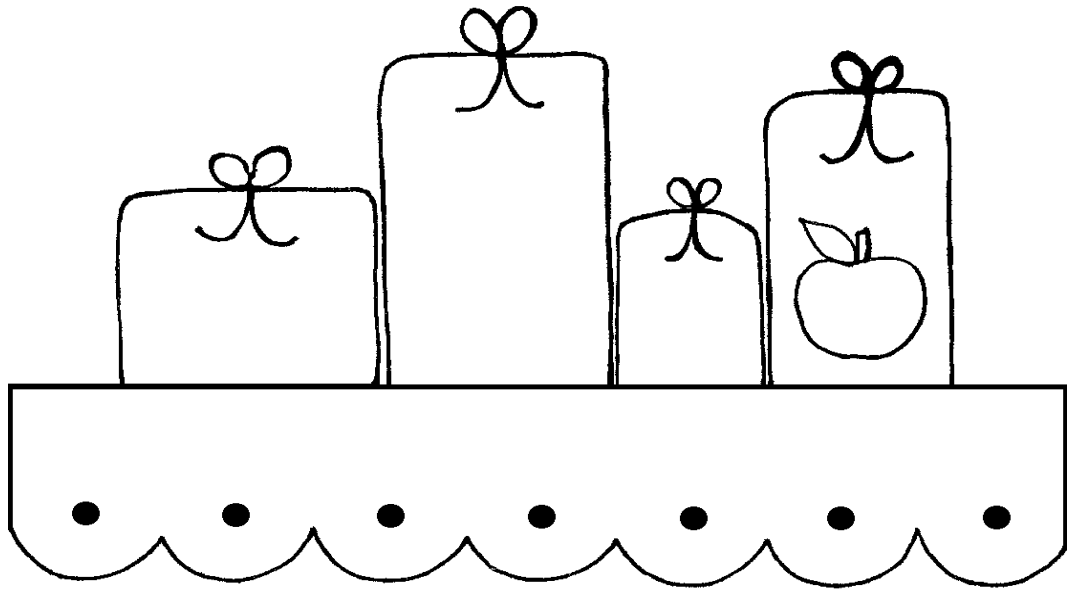
Have fun!



This project is for adult use only as it involves using cutting tools and using materials that may ruin clothing. Crafty Templates or anyone associated or manufacturers mentioned in the instructions can not be held responsible for any damage to personal clothing or property that may arise from the use of these projects and templates. Please read the full terms and conditions of use, which you can find on www.craftytemplates.co.uk. You can also find contact details here if you need any further help with your templates or ideas for your cards.

Landscape size for large square and A6 size cards.

www.craftytemplates.co.uk
© L Banks 2009



Size for portrait A6 size cards.

Autumn Gifts

Autumn Gifts Card

Print off the template sheet decide which size of card you want to make and pick out the size of embellishment that would work with your card. There are two sizes on the template sheet to pick from on you can use on large square cards (6x6) and landscape A6 (4x6) size cards and one for portrait A6 size cards like the note card featured in the sample bellow.

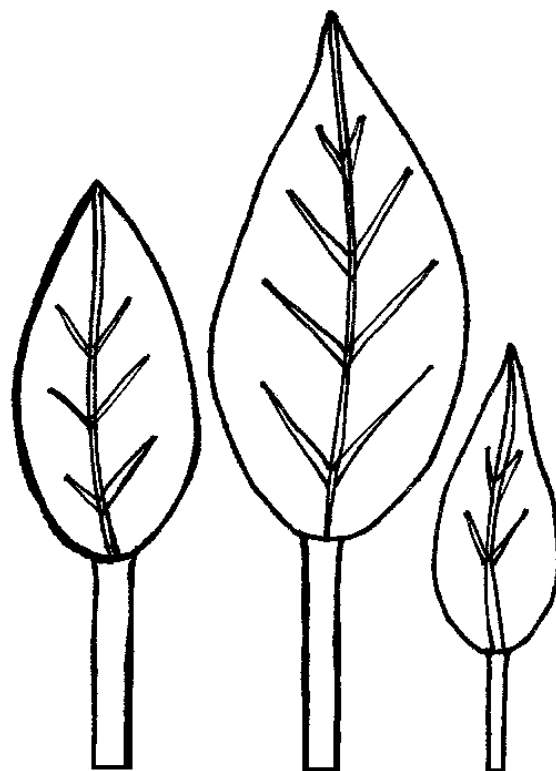
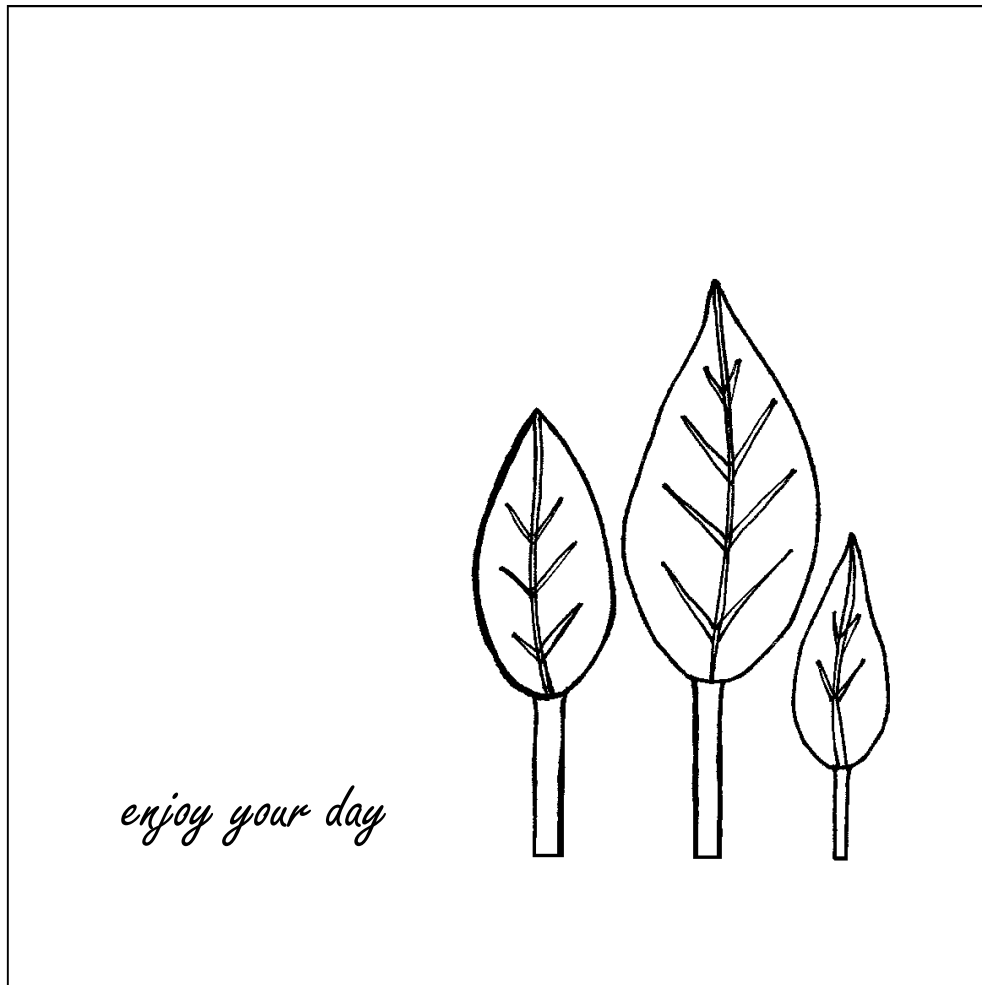
When you have your chosen base card ready cut out the size of template your want to use. Cut off the scalloped edge shape from the template and draw around that on to one patterned paper. Cut out the shape and glue it to your card in a central position or another place you wish to put your embellishment on your card. Next cut out each gift box shape on the template and draw around each one on to a different patterned paper. Glue them on to your card so they sit on top of the scalloped edge.

If you get lost with the placement use the template sheet printout to refer to where each size goes. To finish your card add little ribbons or knotted thread pieces to the tops of each gift box and pop on a message.

Have fun!



This project is for adult use only as it involves using cutting tools and using materials that may ruin clothing. Crafty Templates or anyone associated or manufacturers mentioned in the instructions can not be held responsible for any damage to personal clothing or property that may arise from the use of these projects and templates. Please read the full terms and conditions of use, which you can find on www.craftytemplates.co.uk. You can also find contact details here if you need any further help with your templates or ideas for your cards.



Use the larger
embellishment on a card
or follow the card design
above for a large square
card,

Leaf Trees

Leaf Trees Card

This is a really simple card idea so ideal for last minute or quick cards. It's also a good design for a more sophisticated card. There are two different templates to use one shows you a complete card idea you can copy or one just has the templates. In the card below I've just use the larger templates to make the embellishments.

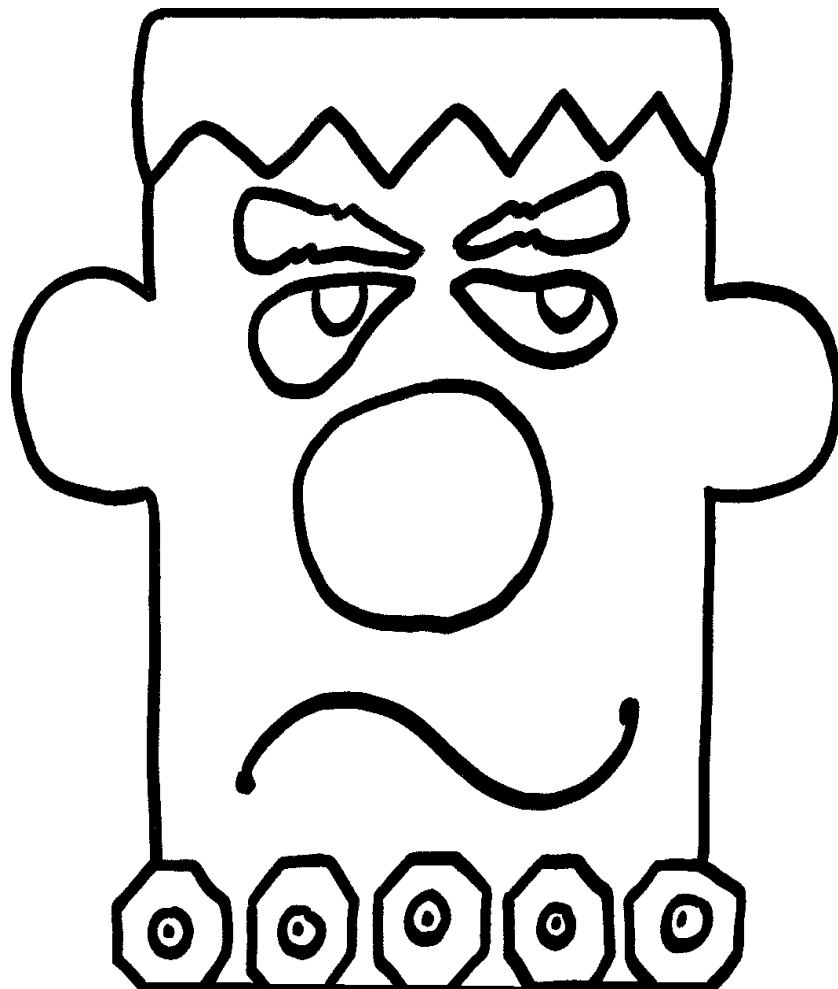
To create the embellishments print out the template sheet and cut out the size you would like to use. Pick out three different patterned papers and draw around each template on to each of the patterned papers then cut them out. Draw around the edges with black pen to highlight them and draw on the details copying them from the template. If you want to add a little more detail add some hand stitching to create the patterns on the leaves. When you're done create a cluster with the embellishments in one corner of your card or centrally on a taller card shape. When you're happy with how they look glue them down. If you want to add any detail to your card keep it as simple as possible to make the embellishments stand out. This is a great card to work up in autumn colours so have a look around at the falling leaves outside for inspiration.

Have fun!



This project is for adult use only as it involves using cutting tools and using materials that may ruin clothing. Crafty Templates or anyone associated or manufacturers mentioned in the instructions can not be held responsible for any damage to personal clothing or property that may arise from the use of these projects and templates. Please read the full terms and conditions of use, which you can find on www.craftytemplates.co.uk. You can also find contact details here if you need any further help with your templates or ideas for your cards.

Match this edge up to the fold on your card



Makes a portrait style size A6 card

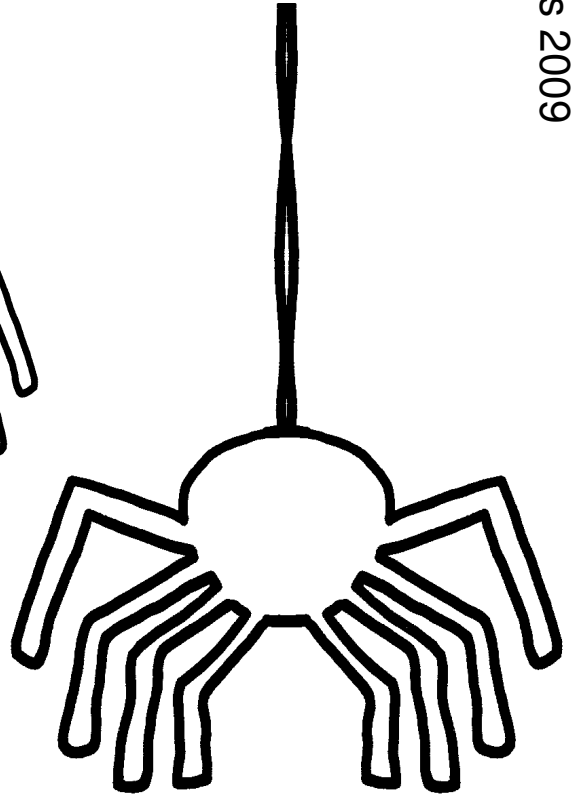
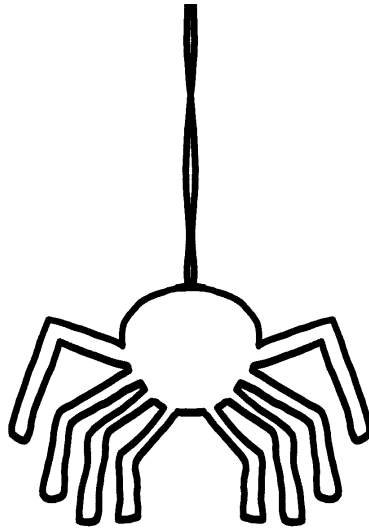
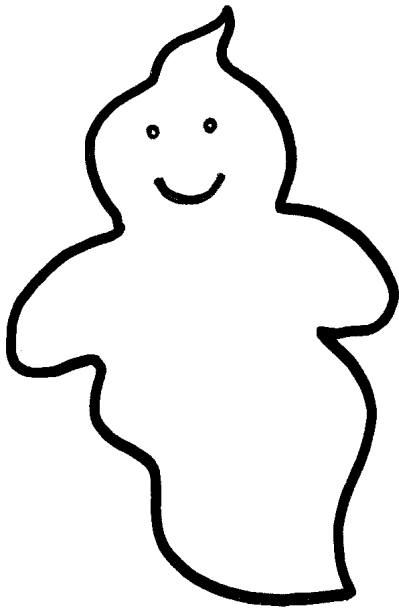
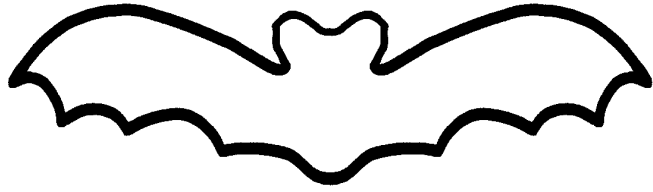
Franks Monster Card

This is a fun card to make to dress up a Halloween table full of treats. Print out the template and cut it out. Fold a sheet of A4 card in half (or a piece large enough to fit the template on) and place the template on your card matching the top of it to the fold on your card. Draw around the shape and cut it out to make your shaped base card. Next cut out the features from the template, the hair, eyes, eyebrows and nose. Draw around each of the shapes on to corresponding coloured card so maybe black for the hair and eyebrows and green for the nose and eyes. Cut them out and assemble them on to the front of your shaped base card. Draw on the mouth copying it from the template. Next cut out the bolt shapes and draw around them on to silver card and cut them out. Stick them on a piece of black card in a line and re-cut them out as one piece then attach that to your card. If you like you can add some more detail to the bolts like brads. Finish your card by highlighting the edges and features with black pen.

Have fun!



This project is for adult use only as it involves using cutting tools and using materials that may ruin clothing. Crafty Templates or anyone associated or manufacturers mentioned in the instructions can not be held responsible for any damage to personal clothing or property that may arise from the use of these projects and templates. Please read the full terms and conditions of use, which you can find on www.craftytemplates.co.uk. You can also find contact details here if you need any further help with your templates or ideas for your cards.



Ghosties and Ghouls

Embellishment templates -
pick out the size and
shape you want to use or
use different clusters of
embellishments on one
card

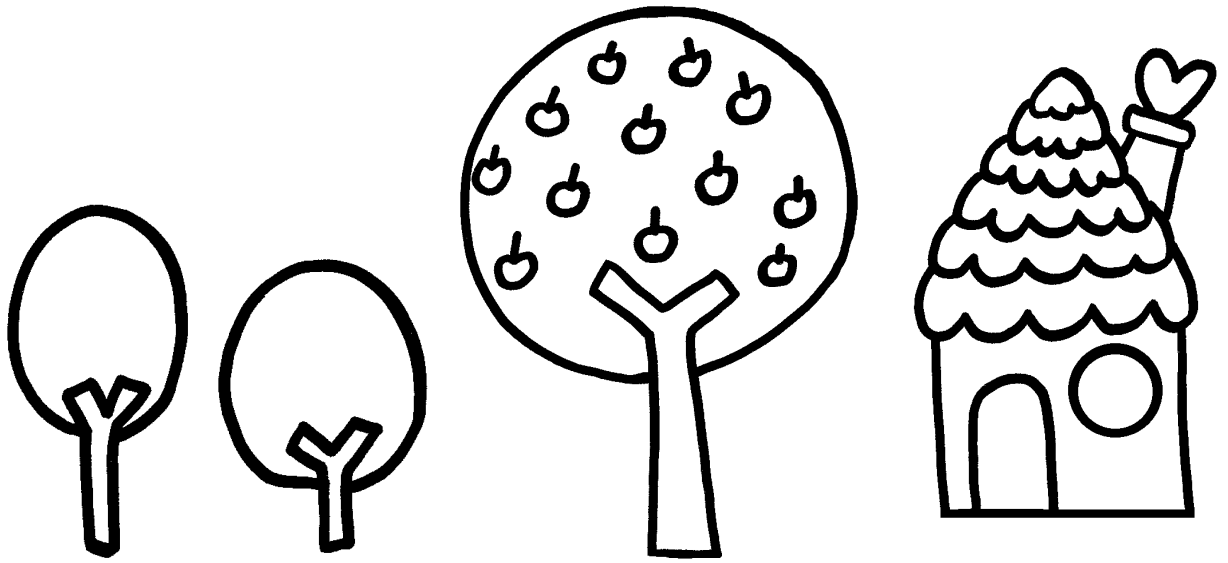
Ghosties and Ghouls Card

This template sheet contains lots of different embellishment templates you can use for Halloween decorations. To use any of the embellishments simply cut them out from the template sheet, draw around them and cut them out. Use them to embellish cards or party invites. The cupcake toppers in the sample below are simply the cut out embellishments with cocktail sticks glued on to the backs. If you're making them for every young children you could also use paper straws or lollipop sticks in place of the cocktail sticks.

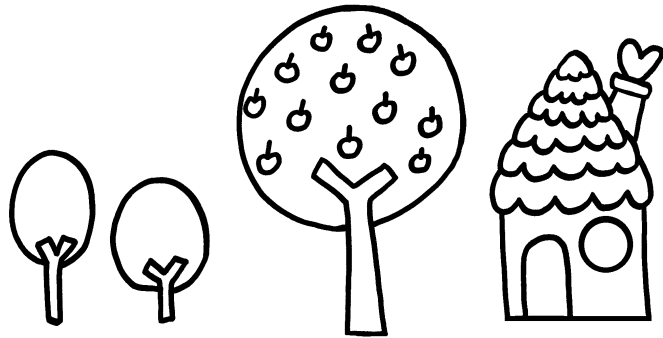
Have fun!



This project is for adult use only as it involves using cutting tools and using materials that may ruin clothing. Crafty Templates or anyone associated or manufacturers mentioned in the instructions can not be held responsible for any damage to personal clothing or property that may arise from the use of these projects and templates. Please read the full terms and conditions of use, which you can find on www.craftytemplates.co.uk. You can also find contact details here if you need any further help with your templates or ideas for your cards.



Size for large square cards (6x6) and landscape A6 cards



Size for portrait A6 cards

Autumn Scene

Use the templates to make embellishments. Layer the templates up on a card to make a little scene.

Autumn Scene Card

Print out the template sheet. There are two sizes to choose from on this sheet so first decide what size of card you would like to make and make or pick out a card blank and then decide on the size of embellishments that would suit that card - the small set or the larger set. Cut each of the templates out in the size you have chosen. If you wanted to you can mix up the sizes on one card as is shown in the example. There I picked out the large house and apple tree and mixed it with the smaller trees. When you have the templates cut out you would like to use pick out some patterned or coloured paper to make them up in.

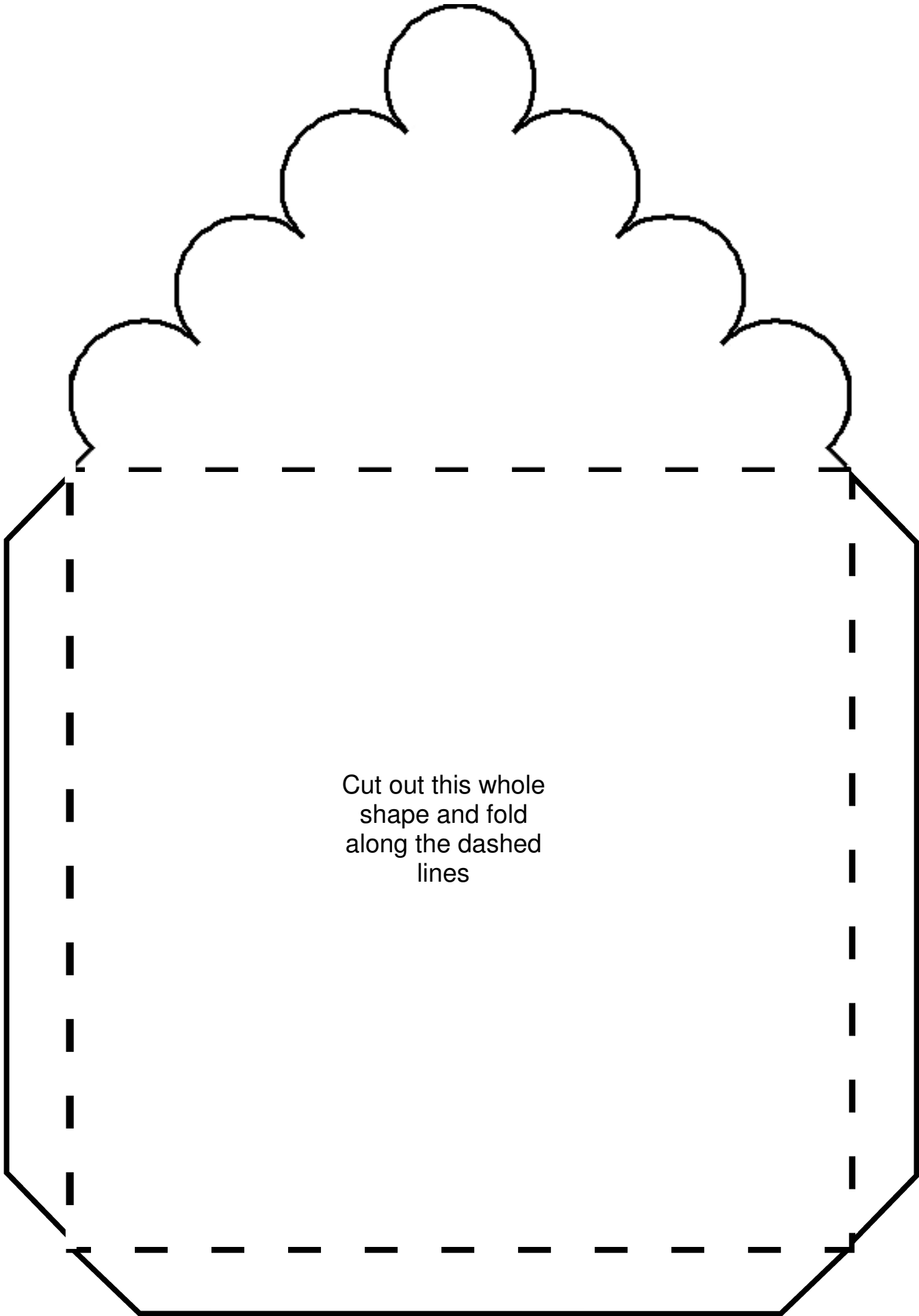
You'll need at least three different ones for the house embellishment to make the roof, house door and window. To make the embellishments place them in turn on to each of the papers you've picked out, draw around them and cut them out. To make the house draw around the whole house shape first then cut the roof and the door and window from the template piece and draw around those on to papers then cut them out and glue them over the top of the whole piece. Do the same with the trunk of the apple tree to make it a different pattern to the top of it. If you choose to you can use a button in place of the window on the house. When they're all cut out you can add more detail to them with pens and colour if you choose to. When you have all your embellishments made create a background on your card. In the sample bellow I cut grass from patterned paper and attached it to the card blank with a machine stitched border. I also added ribbon but you could just use the ribbon and leave out the grass so your scene is sitting on the ribbon. You also could make your scene a background for a stamped image you may have or make it wrap around a large message - there are lots of things you could do with the little pieces to make up different scenes and different cards.

Have fun!



This project is for adult use only as it involves using cutting tools and using materials that may ruin clothing. Crafty Templates or anyone associated or manufacturers mentioned in the instructions can not be held responsible for any damage to personal clothing or property that may arise from the use of these projects and templates. Please read the full terms and conditions of use, which you can find on www.craftytemplates.co.uk. You can also find contact details here if you need any further help with your templates or ideas for your cards.

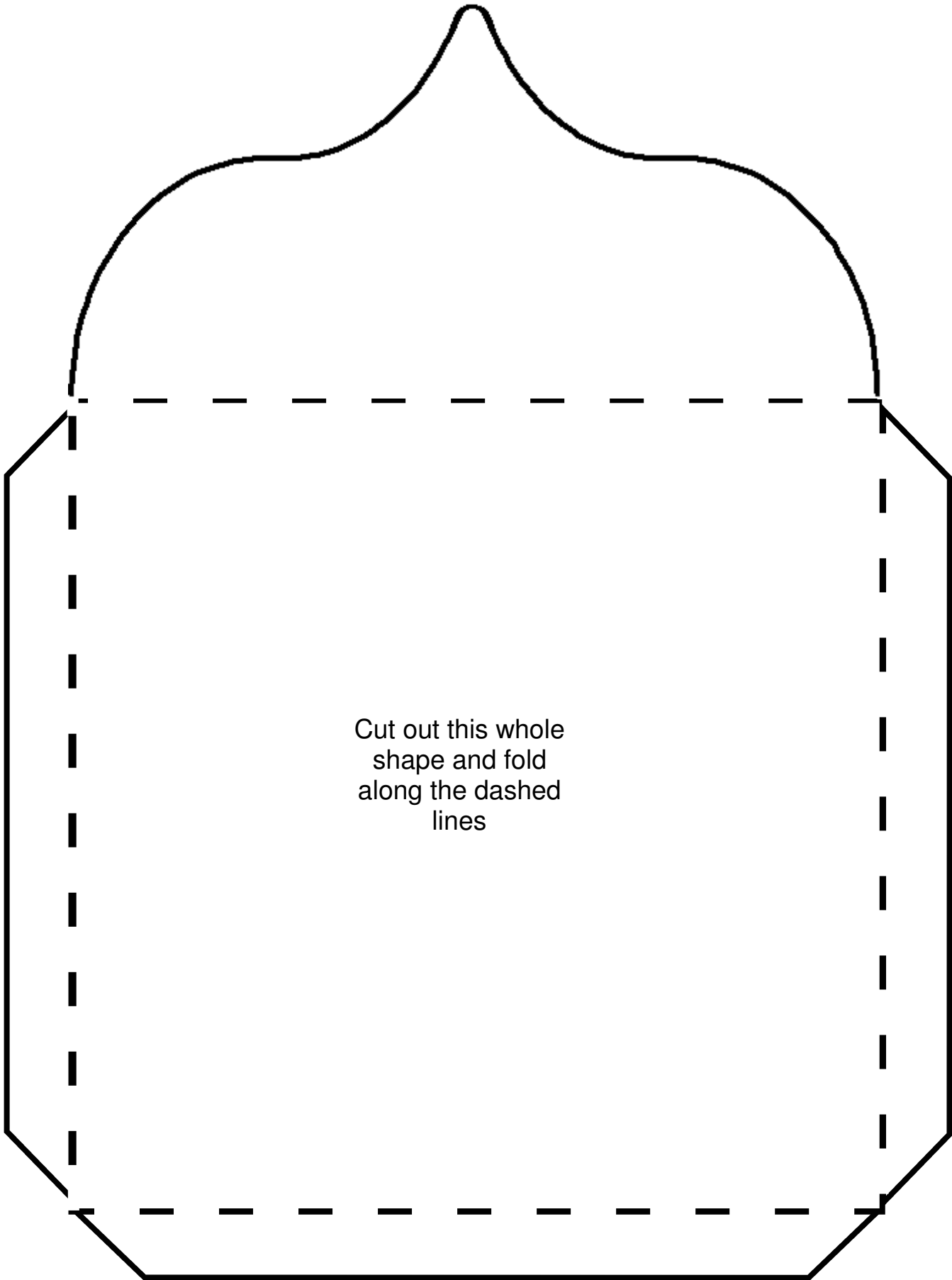
www.craftytemplates.co.uk
© L Banks 2009



Cut out this whole
shape and fold
along the dashed
lines

Fancy Envelope Template - Frill

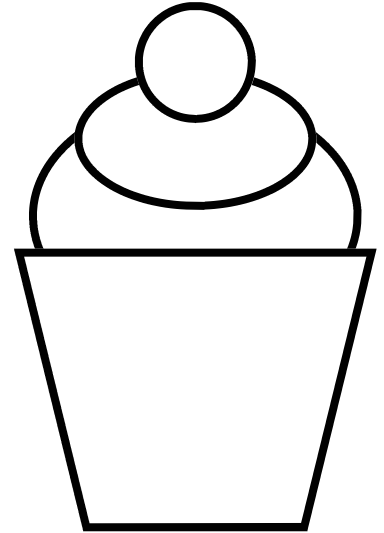
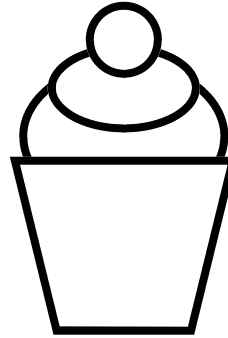
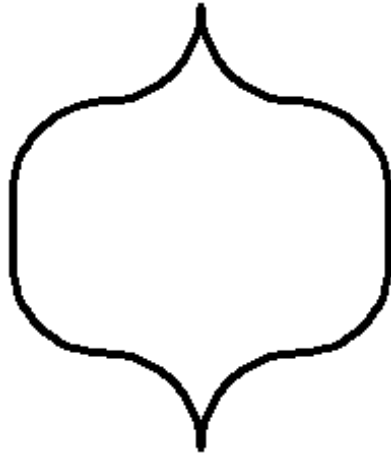
www.craftytemplates.co.uk
© L Banks 2009



Fancy Envelope Template - Bracket

Decorations

Use these to make embellishments to stick on to the top flap of your fancy envelopes like a seal.



Fancy Envelope Template - Top Piece & Deco

Cut out this shape and glue it over the top of the flap pieces matching the bottom edges up so the top edge leaves a gap.

Fancy Envelopes

These envelopes are great fun and can be made with small pieces of paper and are sized to fit 6x6 square cards. There are two different styles to make but both are made in the same way. Page 15 has the frill edge template and page 16 has the bracket edge - which one you choose depends on which fancy edge you would like to have on your envelope flap. Print out either (or both) of these pages and cut out the template. Place it on a piece of patterned paper or card and draw around the shape. Cut it out. Mark from the template the start and finishing points of the dashed lines and then score along these lines to make them easier to fold. Lay the cut out shape so the inside is facing upward and fold all the edges inwards then put it to one side. Next print out page 17 of the templates and cut out the square template shape on the sheet. Draw around this on to some more card or patterned paper and cut it out. Add glue to the flaps of your first piece and lay the second piece over the top matching the bottom and side edges, the top edge should have a gap and should be left un-glued as this forms the opening of your envelope.

That's it your envelope is all done. Because you can create them from scratch you can tailor your envelope to your card and use the same patterned papers to make both up. On page 17 of your templates there are also some embellishments you can use.

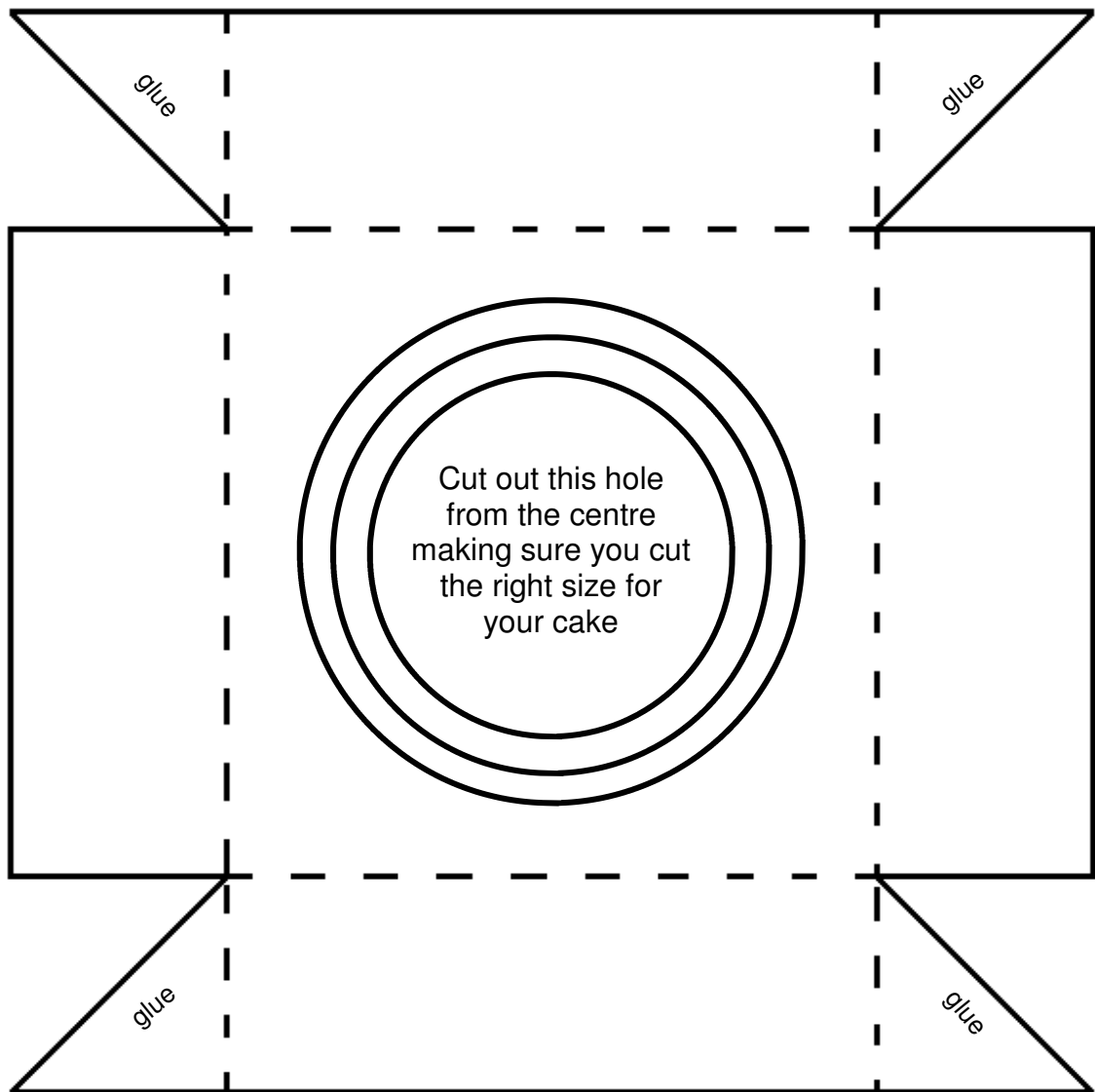
You can use them as embellishments for your cards or as seals on your envelopes to glue the flap down.

Have fun!



This project is for adult use only as it involves using cutting tools and using materials that may ruin clothing. Crafty Templates or anyone associated or manufacturers mentioned in the instructions can not be held responsible for any damage to personal clothing or property that may arise from the use of these projects and templates. Please read the full terms and conditions of use, which you can find on www.craftytemplates.co.uk. You can also find contact details here if you need any further help with your templates or ideas for your cards.

www.craftytemplates.co.uk
© L Banks 2009

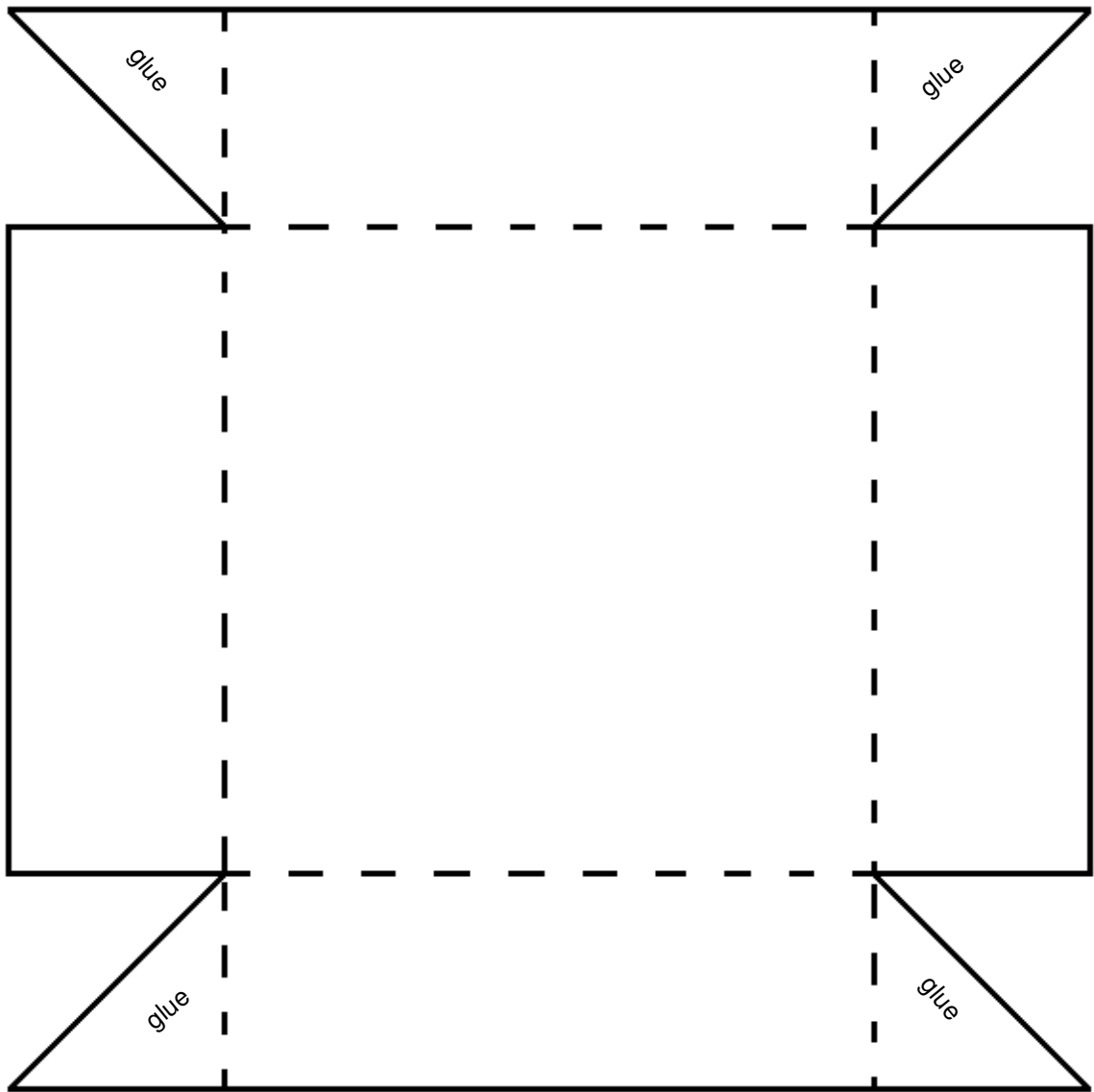


Cake Holder - cut out and fold along the dashed lines

Autumn Treats - Cupcake Box

Cut out one of this shape from card. Important - Measure your cake before you cut out the centre circle to make sure you get one that fits your size of cake. It needs to fit in so it holds your cake snug in place.

www.craftytemplates.co.uk
© L Banks 2009



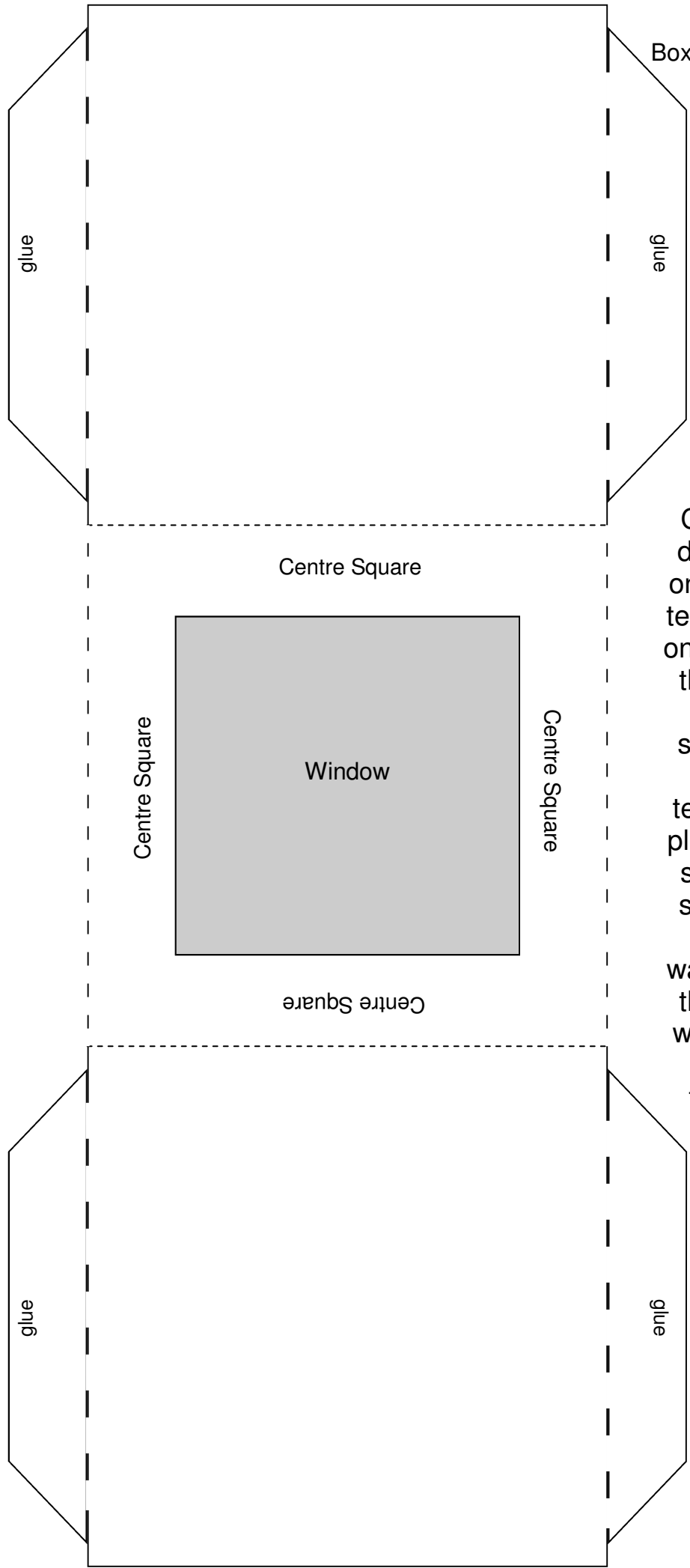
Box Bottom - cut out and fold along the dashed lines

Cut out one of this shape from card

Autumn Treats - Cupcake Box

Autumn Treats - Cupcake Box

www.craftytemplates.co.uk
© L Banks 2009



Box Lid - cut out the template

Cut out the template and draw around it on to card once. Cut the flaps off the template and then place it on your drawing turned so the centre square is over the top of the middle square you've just drawn and draw around the template again to make a plus, + shape. Cut out the shape and fold along the score lines (dashed lines on the template). If you want to make a window in the top of the box cut the window (grey square) out then glue the box together using the flaps.

Cupcake Treat Box

This isn't a card but autumn is a great time to start baking and sharing treats whether it's for birthdays or just because! These boxes are incredibly simple to make but look mightily impressive so it's worth having a go and making a simple cupcake a fantastic treat. You will need to make your cakes up before you make your box to make sure you cut out the right size holder. Cake cases aren't standard sizes so I've included different sized holes. The ones I used in the sample are muffin cases and have a 50mm base so I used the largest hole on the holder template which is 7cm across and it fits perfectly. For smaller fairy cake style cases use the smallest size hole. The whole finished box makes a 9cm cube so there's plenty of room if you want to go to town on the icing!

To make the box print off the template sheets pages 19 to 21. The first page makes the holder the second the base and the third the lid of your box. When you're picking what paper or card to use remember that the lid

will be the most decorative part as everything else will be covered over so can be kept fairly plain. Cut out the holder template and place it on plain card, draw around it and cut it out. Choose a hole on the template that fits your size of cake then cut it out of the template. Place the template back on your shape and draw around the hole then cut it out of the middle of your card shape like a window. Mark from the template the places of all the dashed lines and score along these lines then fold them downward. Apply glue where indicated on the template and glue the base together to make the holder. The base piece makes up in exactly the same way but without the hole. This base is then turned over and the holder can be slotted inside it. The template has been made so it fits snugly so it shouldn't need any glue to fix it in place.

Finally to make the lid cut out the lid template - you'll need a large piece of card or paper to make the lid something like a A3 size or a 12x12" size. Place the template on your card and draw around it. Now turn the template 90° so the centre square of the template is still in the same place and draw around the template again so you have a cross shape like this +. Mark the score lines from the template and score along them. If you want to cut a window in the top of your box use the grey area on the template to cut one out. Finally apply glue where indicated on the template and use the triangle flaps to glue your lid together. Slide the lid over the top of your base to complete your box.



Have fun!

This project is for adult use only as it involves using cutting tools and using materials that may ruin clothing. Crafty Templates or anyone associated or manufacturers mentioned in the instructions can not be held responsible for any damage to personal clothing or property that may arise from the use of these projects and templates. Please read the full terms and conditions of use, which you can find on www.craftytemplates.co.uk. You can also find contact details here if you need any further help with your templates or ideas for your cards.