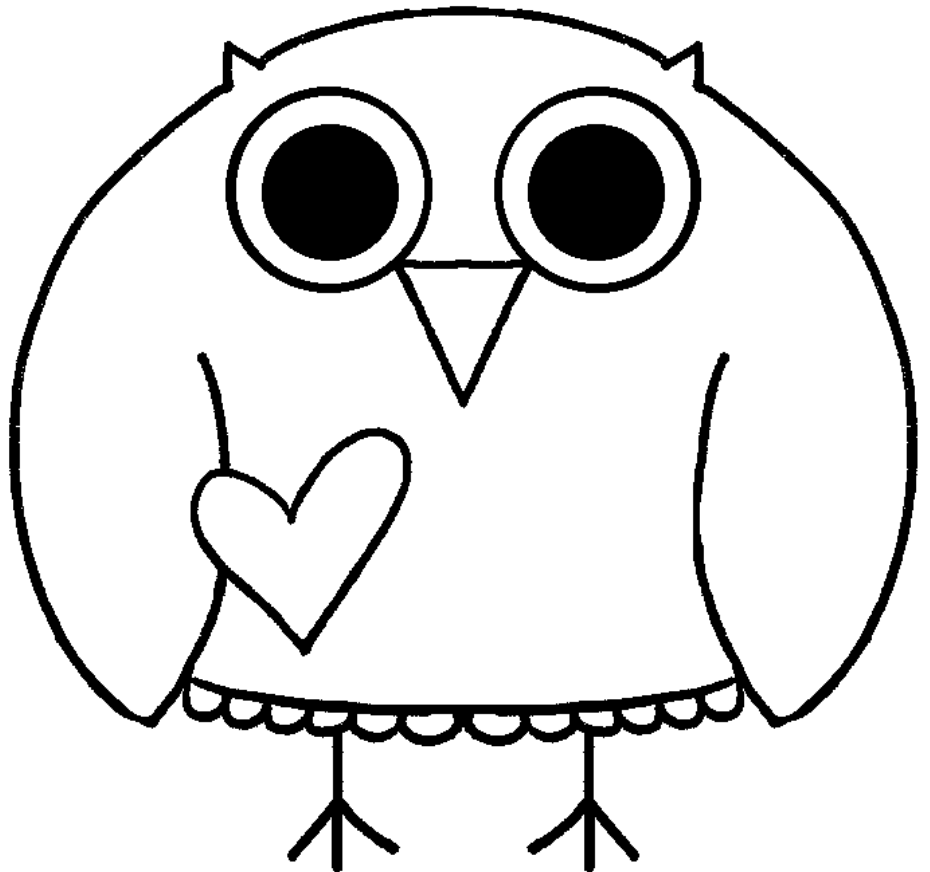


www.craftytemplates.co.uk
© L Banks 2009

Owl Love card



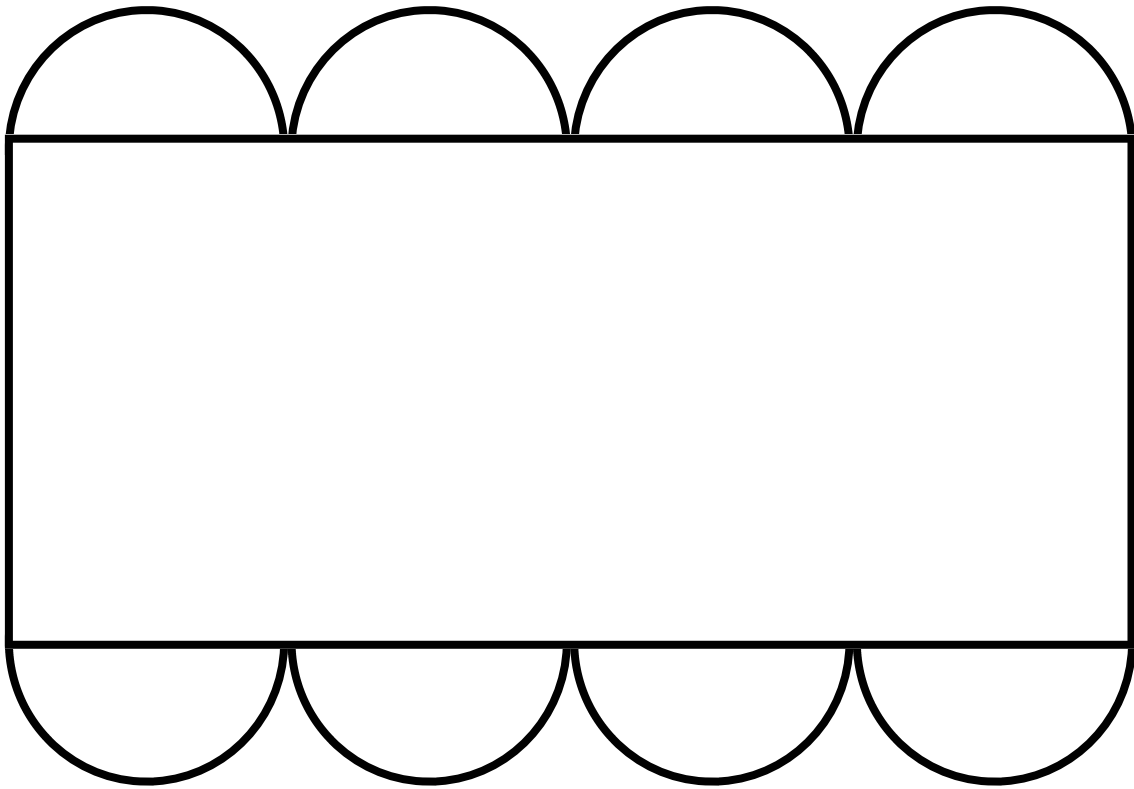
Owl Love Card

There are two options on this template sheet you can simply use the one large owl character as a card topper - printing him out on card and then cutting out & decorating then adding him to a card blank. You can also use the other template to make a decorative shape to go on your card blank with a cute little owl character decoration on top.

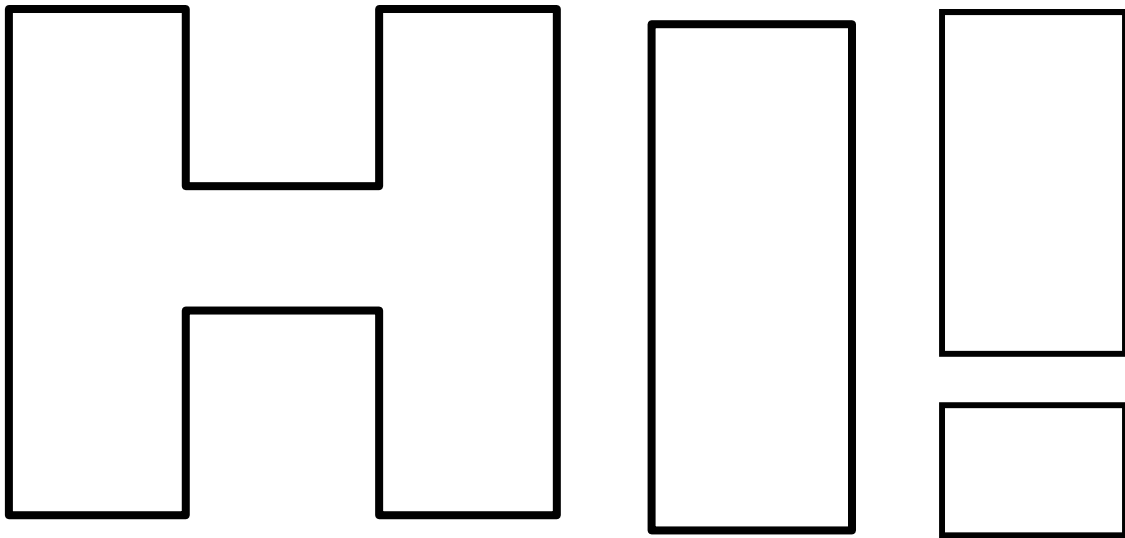
To use the decorative shape template and make a card like the example bellow first you need to print out the template and cut out the shape around the outside line first. Place the shape on a piece of patterned paper, draw around and cut it out. Next cut out the smaller shape from the template piece and again draw around that and cut it out. Layer the two decorative shapes and attach them to your card blank. You can leave them flat or you can attach one on top of the other with 3D pads to give it dimension. To make the little owl you can either draw around it and draw on the details copying them from the template or you can print the template sheet directly on to patterned/coloured paper and cut out the owl to make your topper. Have fun!



This project is for adult use only as it involves using cutting tools and using materials that may ruin clothing. Crafty Templates or anyone associated or manufacturers mentioned in the instructions can not be held responsible for any damage to personal clothing or property that may arise from the use of these projects and templates. Please read the full terms and conditions of use, which you can find on www.craftytemplates.co.uk. You can also find contact details here if you need any further help with your templates or ideas for your cards.



Hi Scalloped edge card



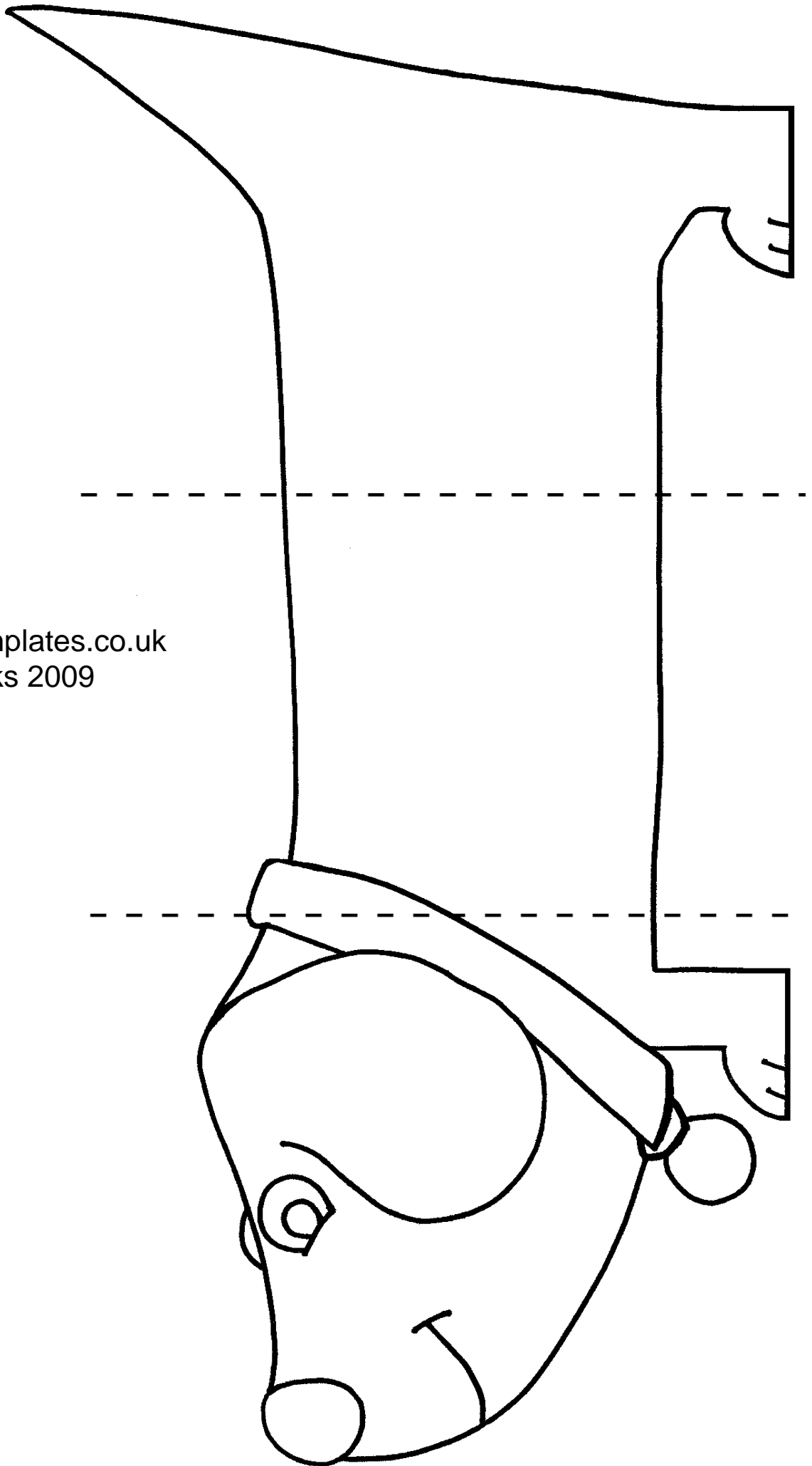
Scalloped Edge Hi Card

Print off the template sheet. Cut out the scallop edge template shape out then place it on a sheet of card, draw around and cut it out. Place the cut out shape on a A6 size card blank so the shape slightly overlaps the top and matches up to the bottom of the card. Trim the bottom edge to fit the scallop shape. That's your basic card shape done. To make the hi! for the middle cut the letters out from the template sheet and draw around them on to patterned paper then cut them out. Each one fits inside the scalloped area so match them up so the H butts up to the left edge of the card and is in between the scalloped edges top and bottom. Do the same for the ! So it matches up to the right hand side of the card and then finally add the I in the middle of the other two characters. You can leave them at that if you want but to make my card a little different I cut out the negative spaces between the letters from the front of the card. You can play around with what you put on your scallop edge card blank and not just stick to the hi! message. Mix it with your own stamps or with other template shapes and embellishments.

Have fun!



This project is for adult use only as it involves using cutting tools and using materials that may ruin clothing. Crafty Templates or anyone associated or manufacturers mentioned in the instructions can not be held responsible for any damage to personal clothing or property that may arise from the use of these projects and templates. Please read the full terms and conditions of use, which you can find on www.craftytemplates.co.uk. You can also find contact details here if you need any further help with your templates or ideas for your cards.



www.craftytemplates.co.uk
© L Banks 2009

3 Fold Doggy

3 Fold Doggy Card

Print off the template sheet. Cut out the template shape around the outside. Place the doggy template on a sheet of card and draw around then cut out. Place the template back over the card and then score along the dashed lines to make the three folds in the card. Cover the shape with patterned paper or decorate any other way you choose. You can cut out the individual detail like the collar to draw around on to different patterned paper and cut out then attach to your card. To make sure doggy stays up as a shaped card you need to fold him so his head and tail end are both pointing inwards to balance him out. You can also attach the shape to a card blank and match the back fold to the fold in the card blank and leave him as a two fold card with his head shape sticking out from the front. There's lots of ways you can play around with the shape to make your card.

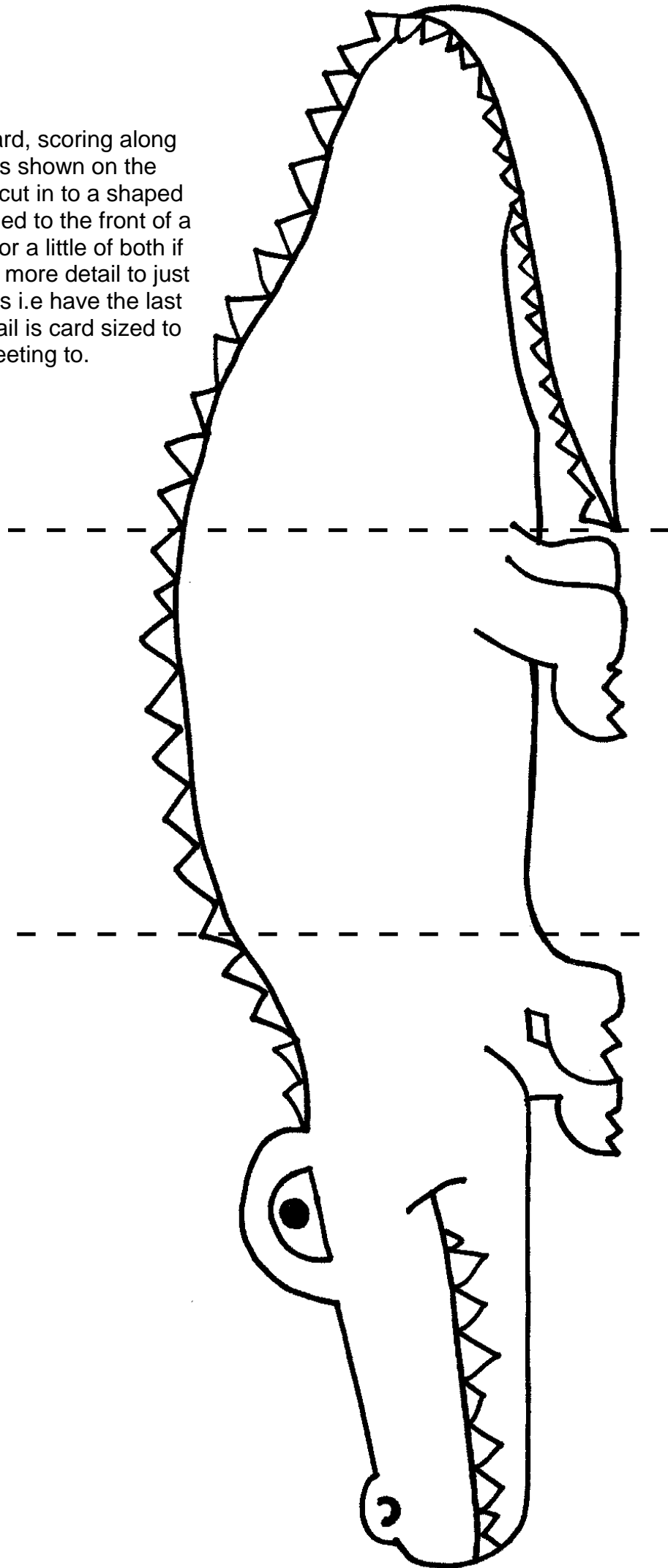
Have fun!



This project is for adult use only as it involves using cutting tools and using materials that may ruin clothing. Crafty Templates or anyone associated or manufacturers mentioned in the instructions can not be held responsible for any damage to personal clothing or property that may arise from the use of these projects and templates. Please read the full terms and conditions of use, which you can find on www.craftytemplates.co.uk. You can also find contact details here if you need any further help with your templates or ideas for your cards.

Makes a 3 fold card, scoring along the dashed lines shown on the template. Can be cut in to a shaped card or can be added to the front of a 3 fold card blank, or a little of both if you wanted to add more detail to just one of the sections i.e have the last panel where the tail is card sized to add a greeting to.

www.craftytemplates.co.uk
© L Banks 2009



3 Fold Crocodile

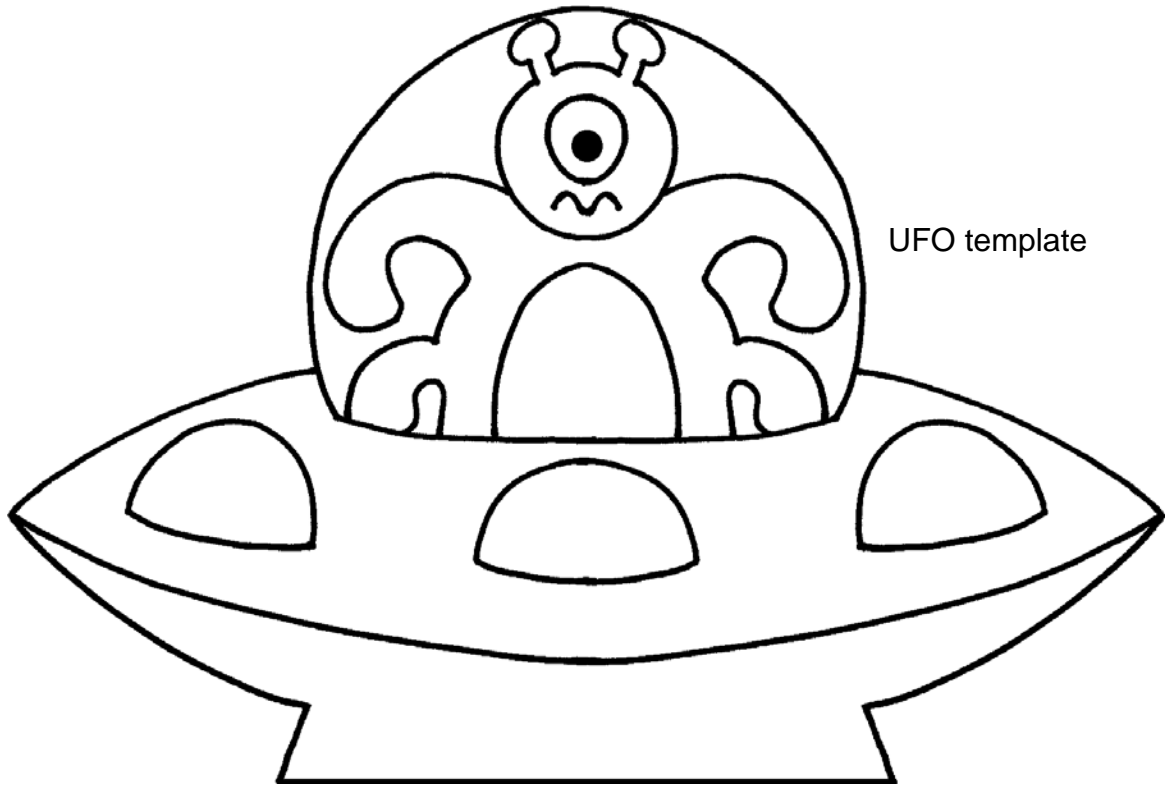
3 Fold Crocodile Card

Print off the template sheet and cut out the crocodile shape. Place it on a sheet of card, draw around the shape then cut it out. Draw the detail on the crocodile tracing the edge and adding the extra bits copying it from the template. When you've done you can choose to do what I did and emboss it with an embossing folder. Once you've added your three scored lines to make your three folds in the areas indicated by the dashed lines on the template you can fold them and have your crocodile as a simple shaped card or you can make a three fold card blank and attach him to the front of the card.

Have fun!

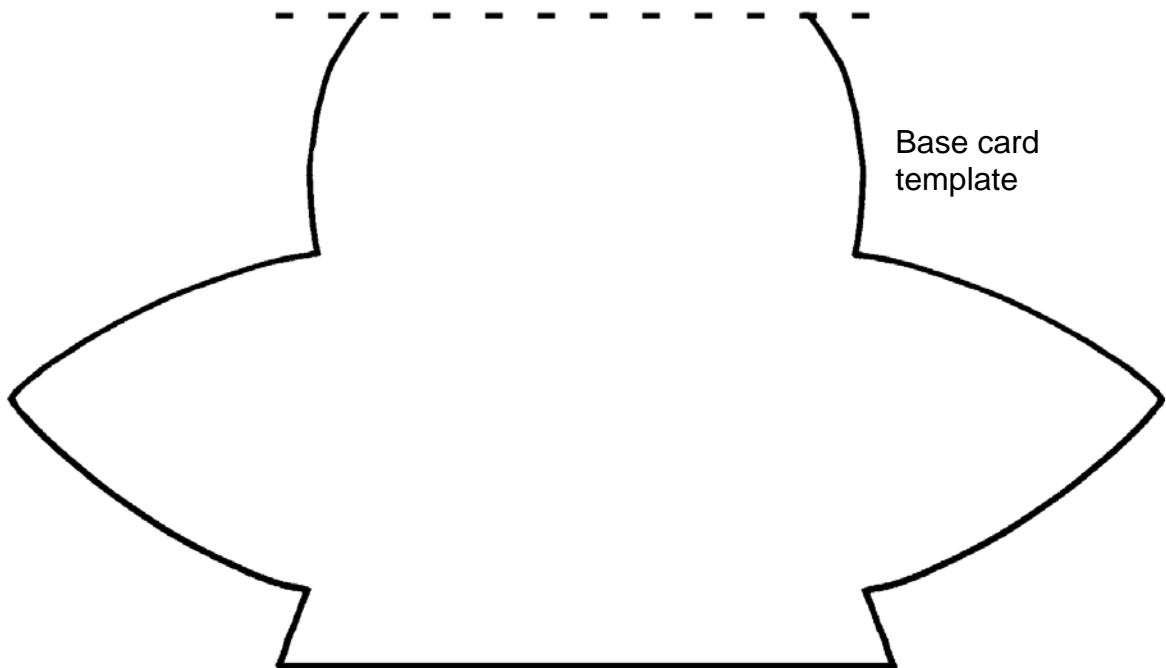


This project is for adult use only as it involves using cutting tools and using materials that may ruin clothing. Crafty Templates or anyone associated or manufacturers mentioned in the instructions can not be held responsible for any damage to personal clothing or property that may arise from the use of these projects and templates. Please read the full terms and conditions of use, which you can find on www.craftytemplates.co.uk. You can also find contact details here if you need any further help with your templates or ideas for your cards.



UFO template

Match the dashed line up to the fold on your card and then draw around



Base card template

Make a shaped card with the lower template and then add the whole UFO shape on top and decorate. You can also just use the top template to make a card embellishment.

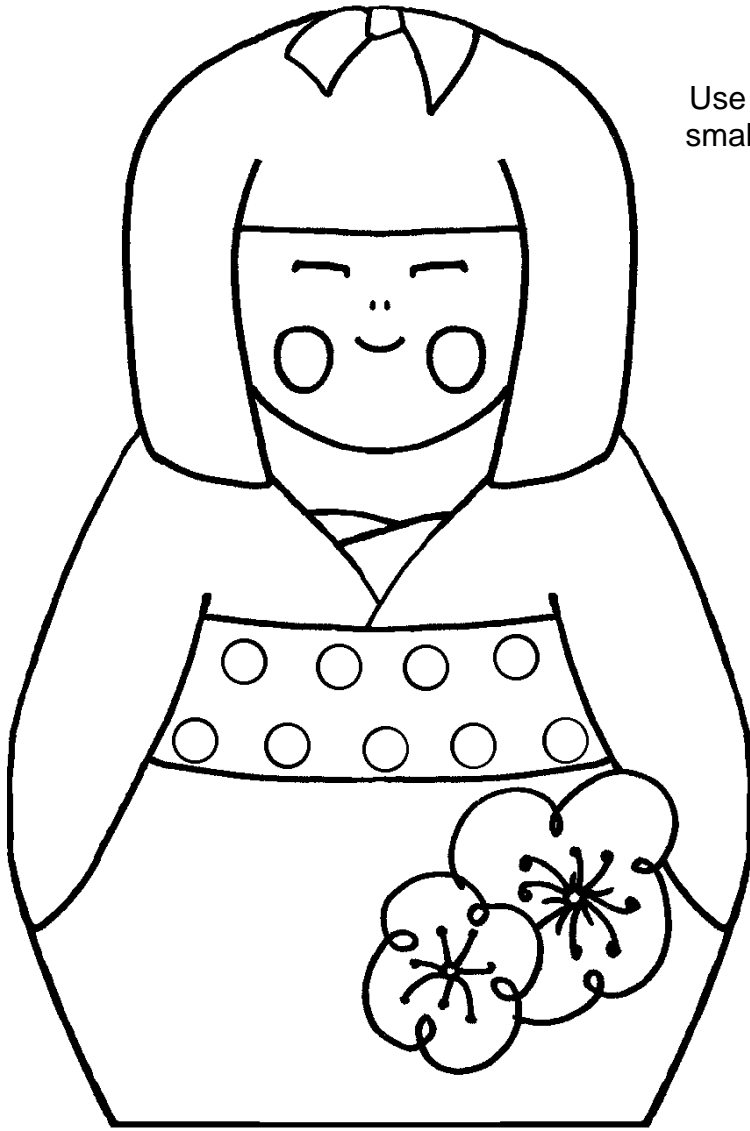
UFO Card

You can use this template two ways - you can use the UFO design to make an embellishment to add to a card blank or you can make a shaped card. To make the shaped card print off the template sheet and cut out the base card template. Fold a piece of A4 card in half and place the template on the card matching the fold up to the dashed line on the template. Draw around the shape and cut it out keeping your card folded to create your shaped base card. To make the embellishment that goes on top of the shaped base card or onto a standard card blank cut out the UFO template shape around the outside edge and place in on a sheet of card then cut it out. Cover the shape with some patterned paper or card. Take the template again and cut off the bottom part of the UFO and draw around it on to some plain or patterned paper then cut it out. Do the same with the bubble top of the UFO, then the alien and the three lights. Reassemble the parts of the UFO on top of the whole shape you cut out earlier and then draw around the edges and add the details with black pen. You can attach your completed UFO to a card blank or match the edges up to the shaped base card and stick it to that to make a shaped card.

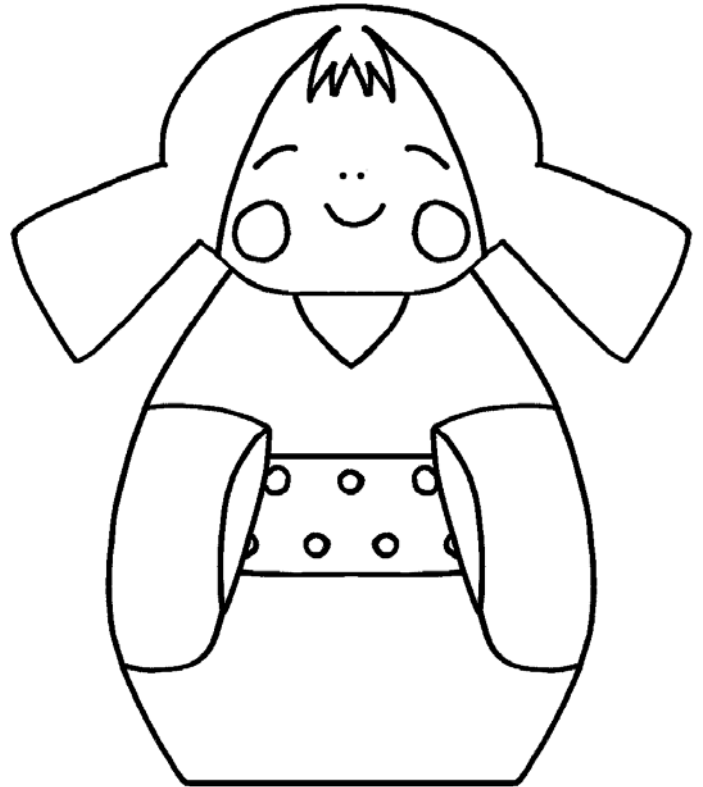
Have fun!



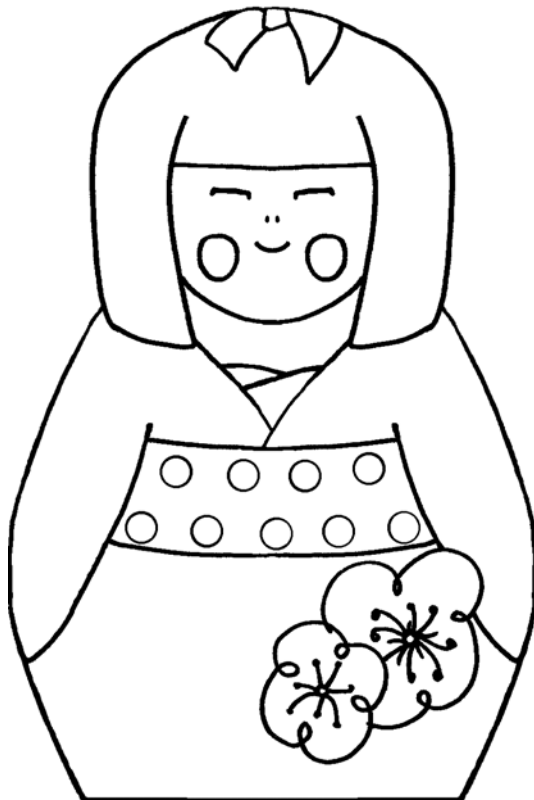
This project is for adult use only as it involves using cutting tools and using materials that may ruin clothing. Crafty Templates or anyone associated or manufacturers mentioned in the instructions can not be held responsible for any damage to personal clothing or property that may arise from the use of these projects and templates. Please read the full terms and conditions of use, which you can find on www.craftytemplates.co.uk. You can also find contact details here if you need any further help with your templates or ideas for your cards.



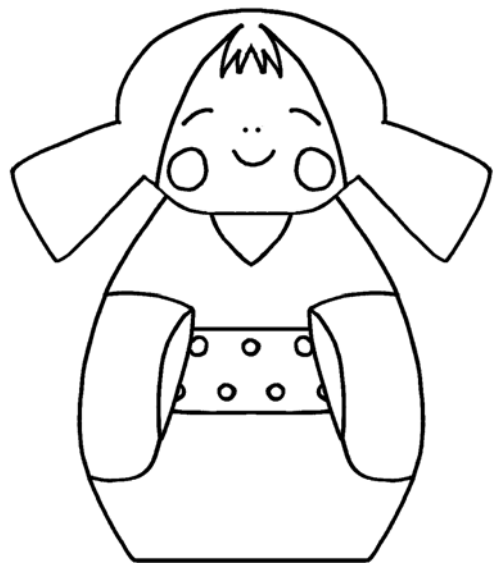
Use this size individually on smaller cards or together on a A5 size card



Kokeshi Dolls (Japanese folk art dolls)



Use this size together on a A6 size card



Kokeshi Dolls Card

Kokeshi dolls are Japanese folk art dolls they're usually carved from wood and painted but they're also very popular in other crafts and make very cute card decorations! There are two different sizes on the template sheet. The bottom ones are for the smaller size A6 style card blank and the larger ones can be used as shaped cards or as embellishments for larger A5 style cards.

To make an embellishment you can print the shapes directly on to card then cut them out and decorate them or you can use them as a template. To use as a template print the sheet out and cut out the doll you want to make. Draw around the whole shape on to a sheet of plain card and cut it out. Next cut away the dolls head and draw around the body part on to patterned paper - cut out and attach to the whole shape you cut out. Cut out the other details on the outfit like the belt and the sleeves and again draw around them and cut them out the stick to the cut out shape. Add the details to the face with coloured pens or pencils then cut out the hair from the template, draw around that and attach it over the head. Finally run around the edges of all the pieces with black pen to highlight them. Attach to your card as you wish along with your choice of extra embellishments if you like.

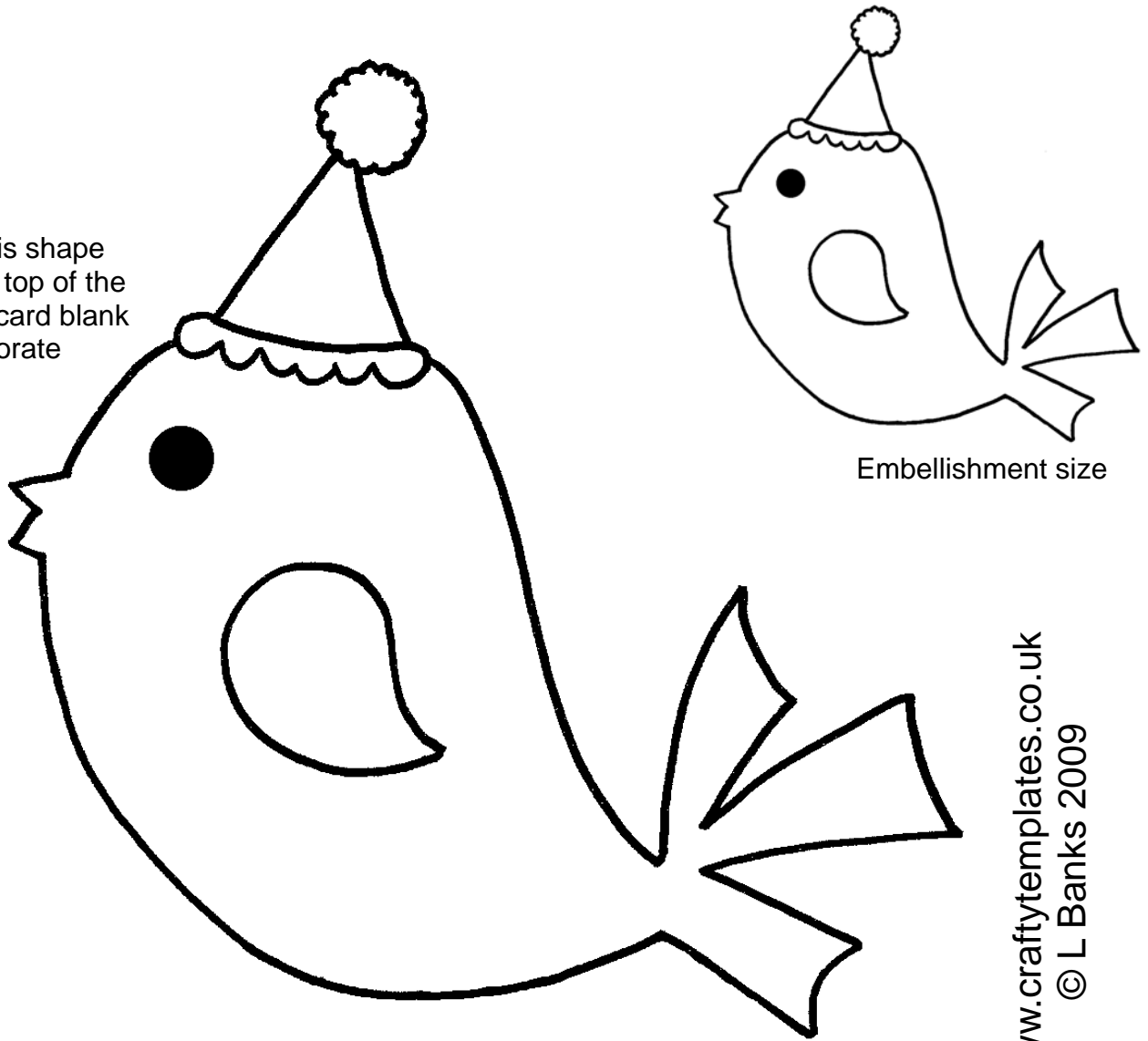
Have fun!



Card by Tracy Gough

This project is for adult use only as it involves using cutting tools and using materials that may ruin clothing. Crafty Templates or anyone associated or manufacturers mentioned in the instructions can not be held responsible for any damage to personal clothing or property that may arise from the use of these projects and templates. Please read the full terms and conditions of use, which you can find on www.craftytemplates.co.uk. You can also find contact details here if you need any further help with your templates or ideas for your cards.

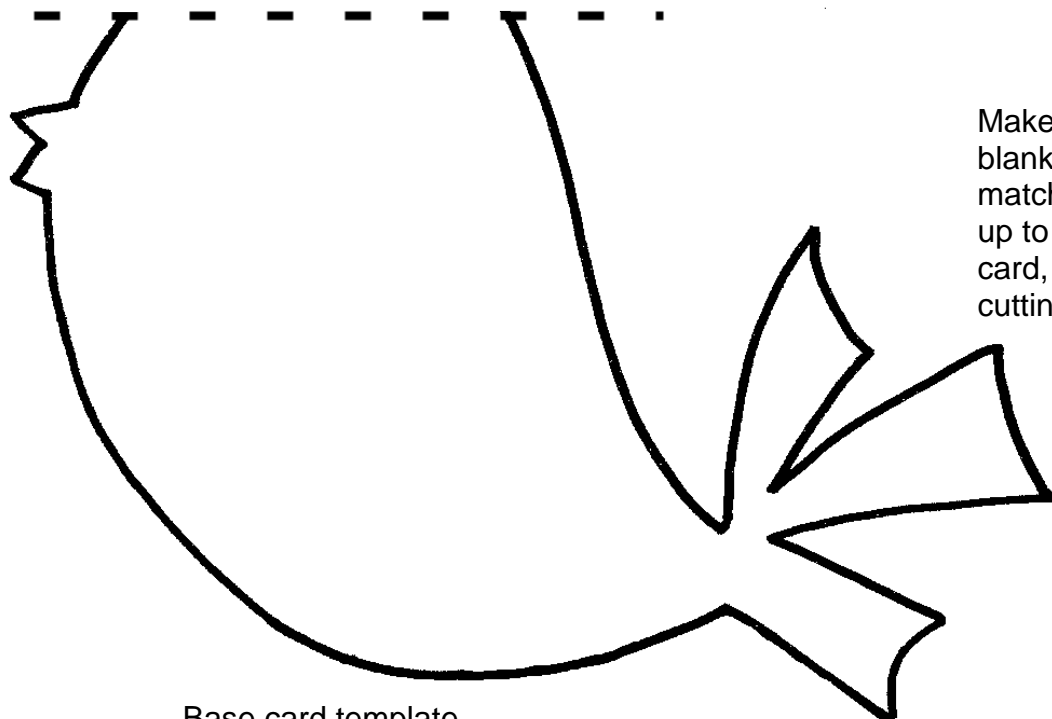
Place this shape
over the top of the
shaped card blank
and decorate



Embellishment size

www.craftytemplates.co.uk
© L Banks 2009

Birthday Tweet Card



Base card template

Make a shaped card
blank using this template,
matching the dashed line
up to the fold on your
card, drawing around and
cutting out

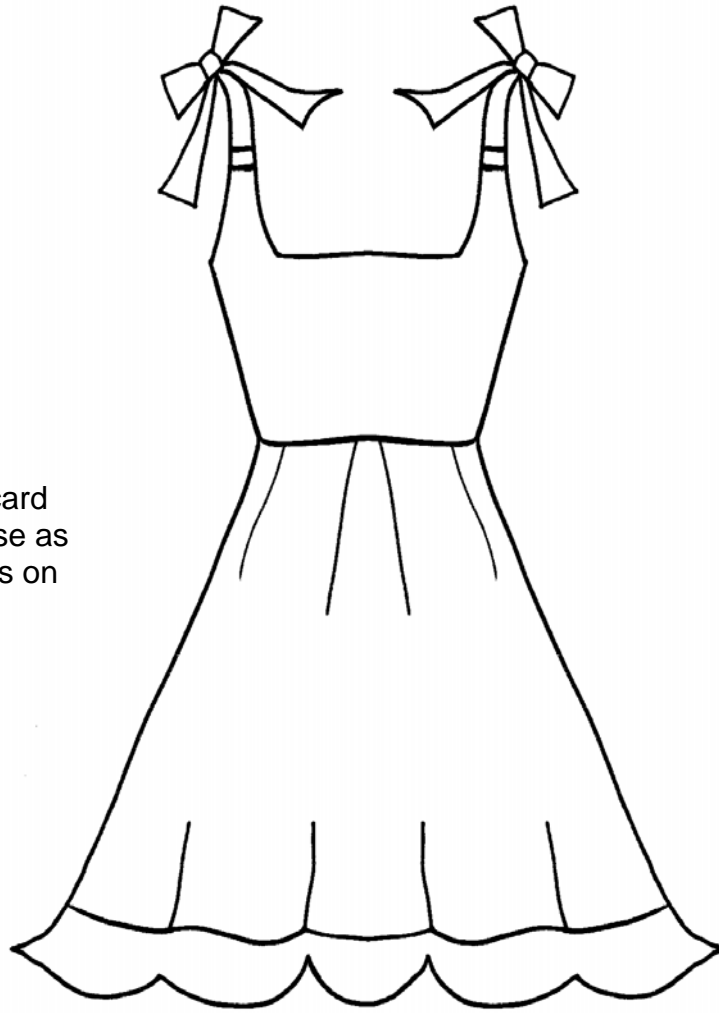
Birthday Tweet Card

Print off the template sheet and cut out the base card template. Fold a piece of card in half and then place the base card template on it matching the dashed line up to the fold on the card. Draw around the shape and cut it out as you keep the card folded. Next cut out the other large shape on the template - this fits directly over the top of your shaped base card. Once you've cut it out draw around it on to a piece of card and cut it out. Cover the whole shape in patterned paper. Cut out the hat and the wing and then draw around those on to different patterned papers then attach them on to your cut out birdie shape. Add on the details by tracing around the edge in black pen or ink. You can add further little details if you like to finish your card.

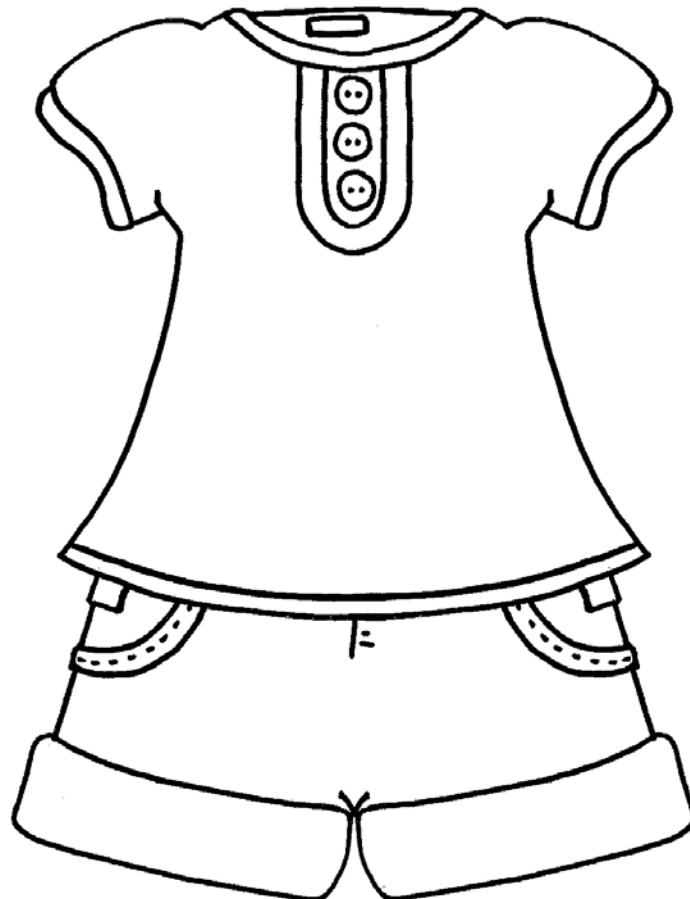
Have fun!



This project is for adult use only as it involves using cutting tools and using materials that may ruin clothing. Crafty Templates or anyone associated or manufacturers mentioned in the instructions can not be held responsible for any damage to personal clothing or property that may arise from the use of these projects and templates. Please read the full terms and conditions of use, which you can find on www.craftytemplates.co.uk. You can also find contact details here if you need any further help with your templates or ideas for your cards.



Two different card templates to use as embellishments on your cards.



Summer Fashions

Summer Fashions Card

You can print this sheet straight on to patterned paper and then just cut out the shapes or you can use each piece as a template. Print the template sheet then cut out the design you would like to use. Place it on to some patterned paper and draw around. Cut out the shape. Draw around the edge with a coloured pen or gel pen or you can ink around the edge if you prefer. For the top and shorts you will need to cut each shape out separately and draw around each one on to different patterned paper. Attach your finished outfit to the front of your choice of card. To get the 3D effect of the dress on the sample card bellow roll the bottom half of the dress around with your fingers to curl the edges in slightly. Glue the top half of the dress on to your card as normal but the bottom half just add a dab of glue to the two bottom corners and slightly pinch the dress as you stick it down.

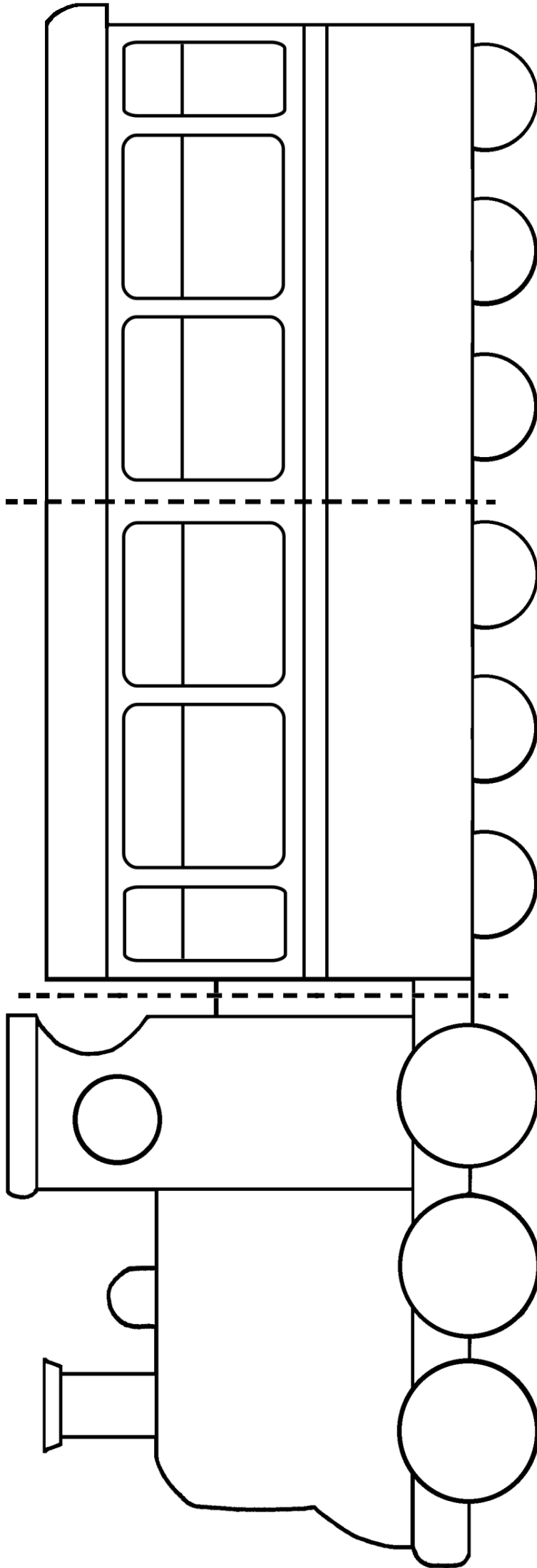
Have fun!



This project is for adult use only as it involves using cutting tools and using materials that may ruin clothing. Crafty Templates or anyone associated or manufacturers mentioned in the instructions can not be held responsible for any damage to personal clothing or property that may arise from the use of these projects and templates. Please read the full terms and conditions of use, which you can find on www.craftytemplates.co.uk. You can also find contact details here if you need any further help with your templates or ideas for your cards.

Train Card

Cut out the whole shape and then fold along the dashed lines indicated on the template to make a three fold card.



3 Fold Train Card

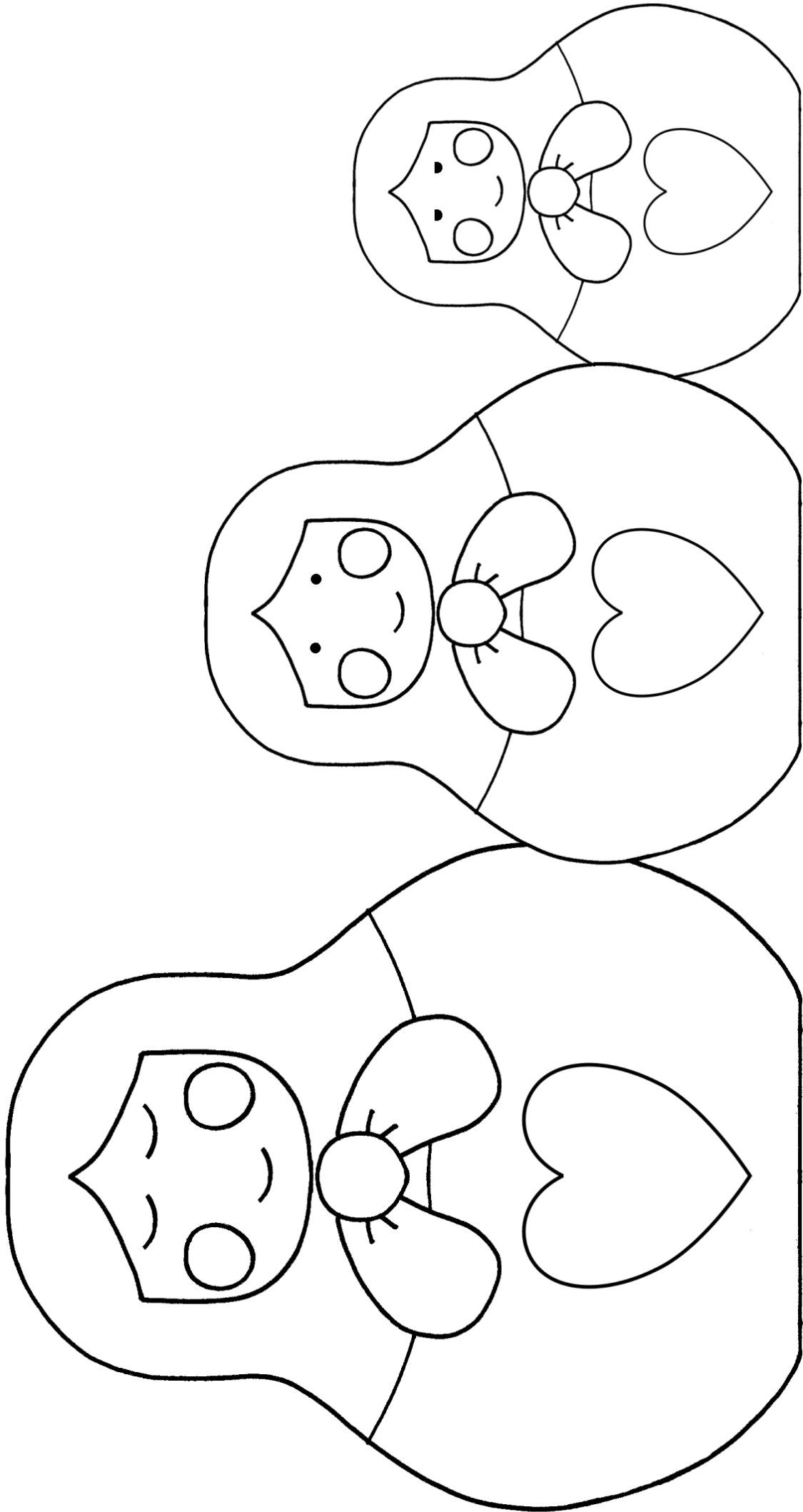
Print off the template sheet and cut out the whole shape. Place the template on a sheet of card and draw around then cut out. Place the template back over the card and score along the dashed lines so it marks though on to your card. That's your basic three fold base card. To decorate it cut apart the train section from the carriage section on the template. Draw around the train engine on to plain or patterned paper and cut it out. You can cut the different sections that make up the train from different colours or you can use pens to colour in the detail. Attach the finished train shape on top of your base card. Cut out the wheels from black card and stick those over the top. For the carriages first colour in (or cover with black card) the carriage wheels directly on your base card then cut them off the template piece. Draw around the whole carriages template shape on to patterned paper and cut it out then stick it on to the base card. Layer up another piece of patterned paper that runs across the middle, cut out the window shapes and attach them to this section. When you've finished decorating your card refold the card in to the three sections, (you might have to score again but it will help making a neat fold if you score it at the beginning too). You can add a greeting if you like and then add your message to the back of the card.
Have fun!



This project is for adult use only as it involves using cutting tools and using materials that may ruin clothing. Crafty Templates or anyone associated or manufacturers mentioned in the instructions can not be held responsible for any damage to personal clothing or property that may arise from the use of these projects and templates. Please read the full terms and conditions of use, which you can find on www.craftytemplates.co.uk. You can also find contact details here if you need any further help with your templates or ideas for your cards.

www.craftytemplates.co.uk
© L Banks 2009

Nesting Dolls 3 fold Card



3 Fold Nesting Dolls Card

Print off the template sheet straight on to white card then print it again on everyday printer paper. Cut out both shapes sticking to the outermost edge, don't separate the dolls keep them together. The card piece will be your base card and then paper piece your template. With the paper template cut out each of the scarves sections on each doll, including cutting out the face from the middle bits. You should have three separate scarf shapes. Draw around each on to different patterned papers then cut them out. Draw the detail on the scarves with black pen copying it from the template. You can make the bow bits on the scarves 3D by cutting out the bow pieces separately and then drawing around them onto the sample colours of patterned paper then attaching over the top with 3D foam pads. Ok next you need to take the remaining bit of the paper template which should be the three lower halves of the doll shapes still attached together. Draw around this whole shape on to coloured card - in the sample below I used red card for this. Cut out the shape and attach it to the base card. Colour in the faces of the dolls working directly on the plain coloured base card. You can use pens or pencils or watercolour. When that's done you can stick the cut out scarf sections on to your base card. Back to the template one more time and this time cut out each of the three heart shapes and draw around them onto different patterned papers. Attach them to each of the dollies on the base card. From this point you can add more detail as you like to finish off your card.

Have fun!



This project is for adult use only as it involves using cutting tools and using materials that may ruin clothing. Crafty Templates or anyone associated or manufacturers mentioned in the instructions can not be held responsible for any damage to personal clothing or property that may arise from the use of these projects and templates. Please read the full terms and conditions of use, which you can find on www.craftytemplates.co.uk. You can also find contact details here if you need any further help with your templates or ideas for your cards.